



TWO POST LIFT - SPO55

THE NEW SPO55 IS ESPECIALLY SUITABLE FOR LIGHT-DUTY COMMERCIAL VEHICLES – ESPECIALLY FOR VEHICLES WITH A LONG WHEELBASE (E.G. MERCEDES-BENZ SPRINTER AND VOLKSWAGEN CRAFTER).



Non load bearing cables ensure even lifting and lowering.

Each lifting column features a maintenance-free high pressure cylinder.

The mechanical safety latch integrated on both columns locks the lift carriage in position and thus ensures maximum safety.

An upper limit bar prevents the vehicle from being lifted too high. This feature effectively protects taller vehicles from being damaged.

The basic frame free design ensures easy to access the lift.

The energy-efficient electro-hydraulic design provides for low noise and economic work.

The double S-profile of the lifting columns provide for utmost stability at minimum space requirements. In addition, the contact surface area of the carriage slider bearings is considerably increased, which protects the column from premature wear.

For increased ergonomics and productivity, all E-models have been equipped with a second control unit. Because of the workshop environment, the pushbuttons can also be pressed when wearing gloves.

The figure shows SPO55E -EH4 (Approved by VOLKSWAGEN)

DETAILS

The lift carriage bearings are made of self-lubricating and absolutely maintenance-free Tivar® 1000 polyethylene. Two characteristics that help reduce operating expenses considerably.

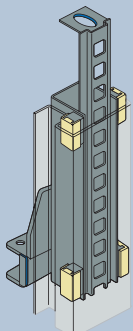
The supporting arms are automatically locked in position during the lifting operation. Once the lift has been completely lowered, this interlock is automatically released. The very narrow spacing between the locking positions and a manual unlocking function enhance the ease of use.

Electrical control

- Single-hand operating unit on both lifting columns.
- Electrically controlled safety latches
- Sensitive pushbuttons.
- Integrated 220 V connection, prepared for connecting compressed air.

Manual control

- Conventional operation using two hands
- Manual lock release.



| Supporting arms | Symmetric | Symmetric |
|--|---------------------|---------------------|
| Model | SPO55M | SPO55E |
| Capacity | 5500 kg | 5500 kg |
| A. Stroke | 1803 mm | 1803 mm |
| B. Overall height | | |
| EH0 | 4165 mm | 4165 mm |
| EH1 | 4470 mm | 4470 mm |
| EH2 | 4775 mm | 4775 mm |
| EH3 | 5080 mm | 5080 mm |
| EH4 | 5415 mm | 5415 mm |
| C. Overall width (Outside of base plate) | 3496 mm | 3496 mm |
| D. Drive through clearance | 2602 mm | 2602 mm |
| Switchoff level | | |
| EH0 | 4026 mm | 4026 mm |
| EH1 | 4331 mm | 4331 mm |
| EH2 | 4636 mm | 4636 mm |
| EH3 | 4941 mm | 4941 mm |
| EH4 | 5266 mm | 5266 mm |
| F. Supporting arm length front min. | | |
| Without extension arm | 790 mm | 790 mm |
| With extension arm | 1040 mm | 1040 mm |
| G. Supporting arm length front max. | | |
| Without extension arm | 1700 mm | 1700 mm |
| With extension arm | 1950 mm | 1950 mm |
| H. Supporting arm length rear min. | | |
| Without extension arm | 790 mm | 790 mm |
| With extension arm | 1040 mm | 1040 mm |
| I. Supporting arm length rear max. | | |
| Without extension arm | 1700 mm | 1700 mm |
| With extension arm | 1950 mm | 1950 mm |
| J. Rotary plate height min. | 119 mm | 119 mm |
| K. Rotary plate height max. | 181 mm | 181 mm |
| M. Clear size column spacing | 2875 mm | 2875 mm |
| Motor performance | 3 kW | 3 kW |
| Electrical connection | 230/400 V, 50 Hz | 230/400 V, 50 Hz |
| Lifting time | 60 sec. | 60 sec. |
| Required ceiling height | | |
| EH0 | 4230 mm | 4230 mm |
| EH1 | 4530 mm | 4530 mm |
| EH2 | 4840 mm | 4840 mm |
| EH3 | 5145 mm | 5145 mm |
| EH4 | 5470 mm | 5470 mm |

*Capacity: 5000 kg with extension arm.
5500 kg without extension arm.

* M Manual lock release
E Electrical control



ROTARY LIFT CONSOLIDATED (HAIMEN) CO.,LTD
No.1388,East Xiushan Road ,Haimen,Jiangsu Province,China
<http://www.vsg-asia.com>
Phone: 86-21-60812756

ACCESSORIES

Rotary adaptor extension kit for passenger cars (4 x 89 mm, 4 x 127 mm),
Item No. FJ7880BBK



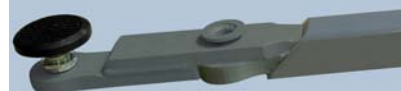
Rotary adaptor extension kit for delivery trucks/vans (4 x 200 mm),
Item No. FJ6172Y



Support kit for Sprinter/Crafter (2 pieces) behind,
Item No. FJ6215MB



Supporting arm extension 250mm,
Item No. AE-250



Support kit for Sprinter/Crafter (2 pieces) front,
Item No. FJ6216



Support kit for delivery trucks/vans (4 x U-support),
Item No. FJ6173Y

