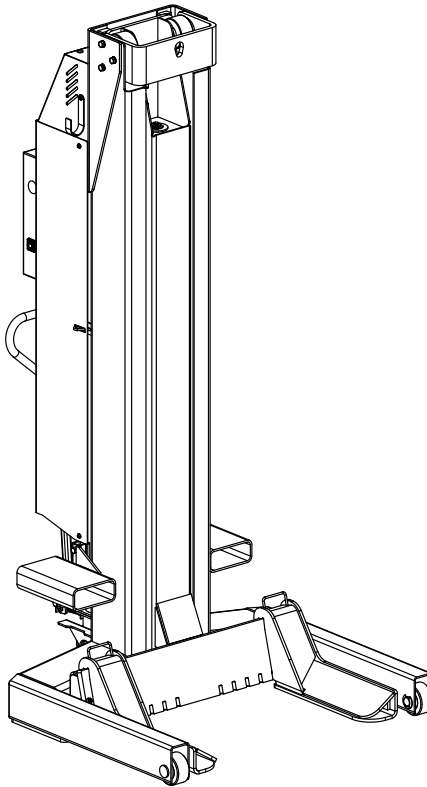




**Parts Breakdown
Mobile Column Lift
24V DC Powered**

**4 Column Lift Capacity 52,000 lbs. (23,588 kg.)
6 Column Lift Capacity 78,000 lbs. (35,382 kg.)
13,000 lbs. (5,897 kg.) per column**



IMPORTANT: When ordering parts or requesting service always give exact model and power unit serial number. Model number is shown on nameplate attached to side of column. Power unit serial number is located on front of power unit.

OWNERS RECORD
Complete information
at right and keep in
a safe place.

Date Installed _____

Installed in Bay # _____

Power Unit Serial # _____

Power Unit Model # _____

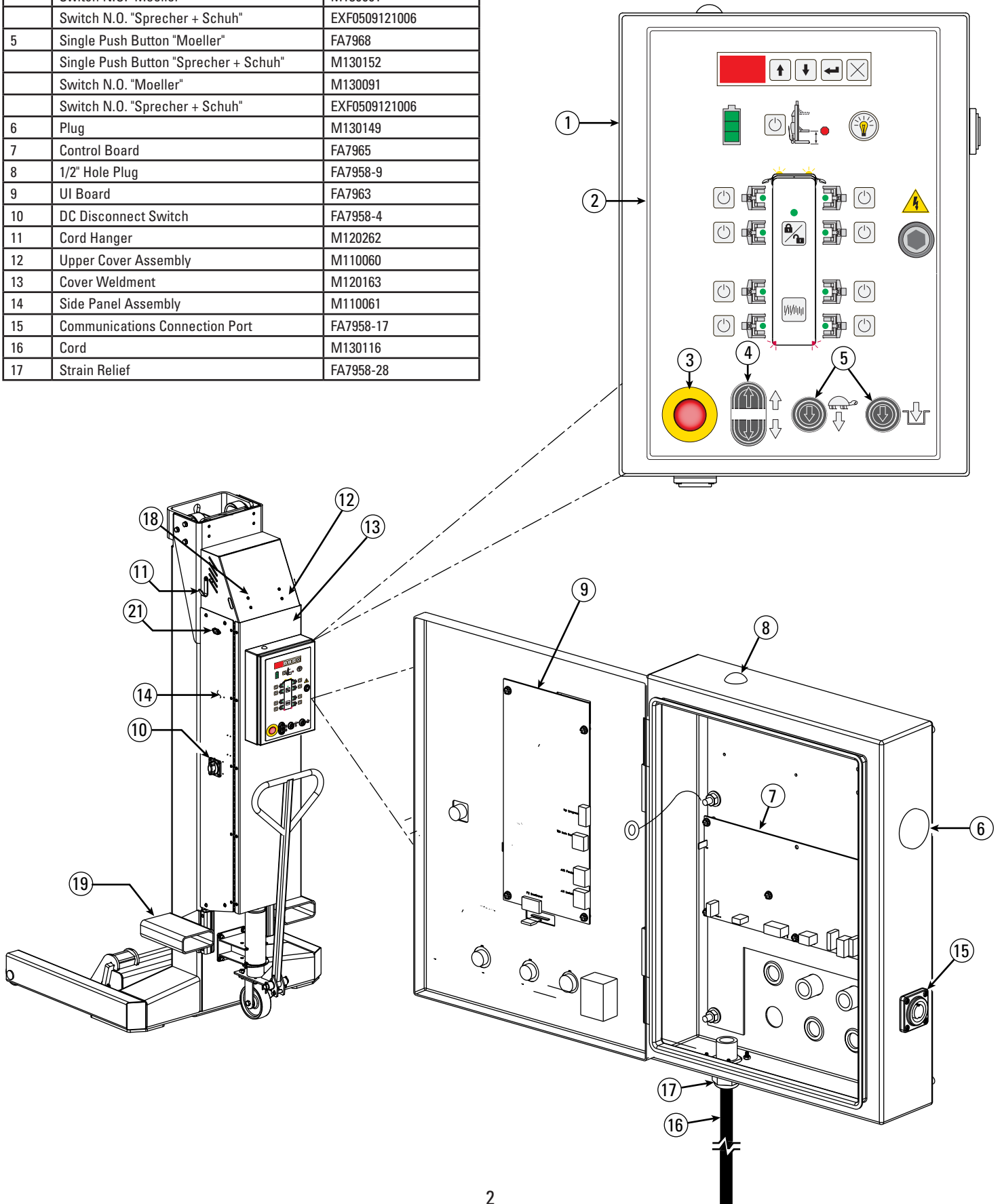
Lift Serial # _____

Lift Model # _____

NOTE: For replacement parts -See your nearest Rotary Parts Distributor.

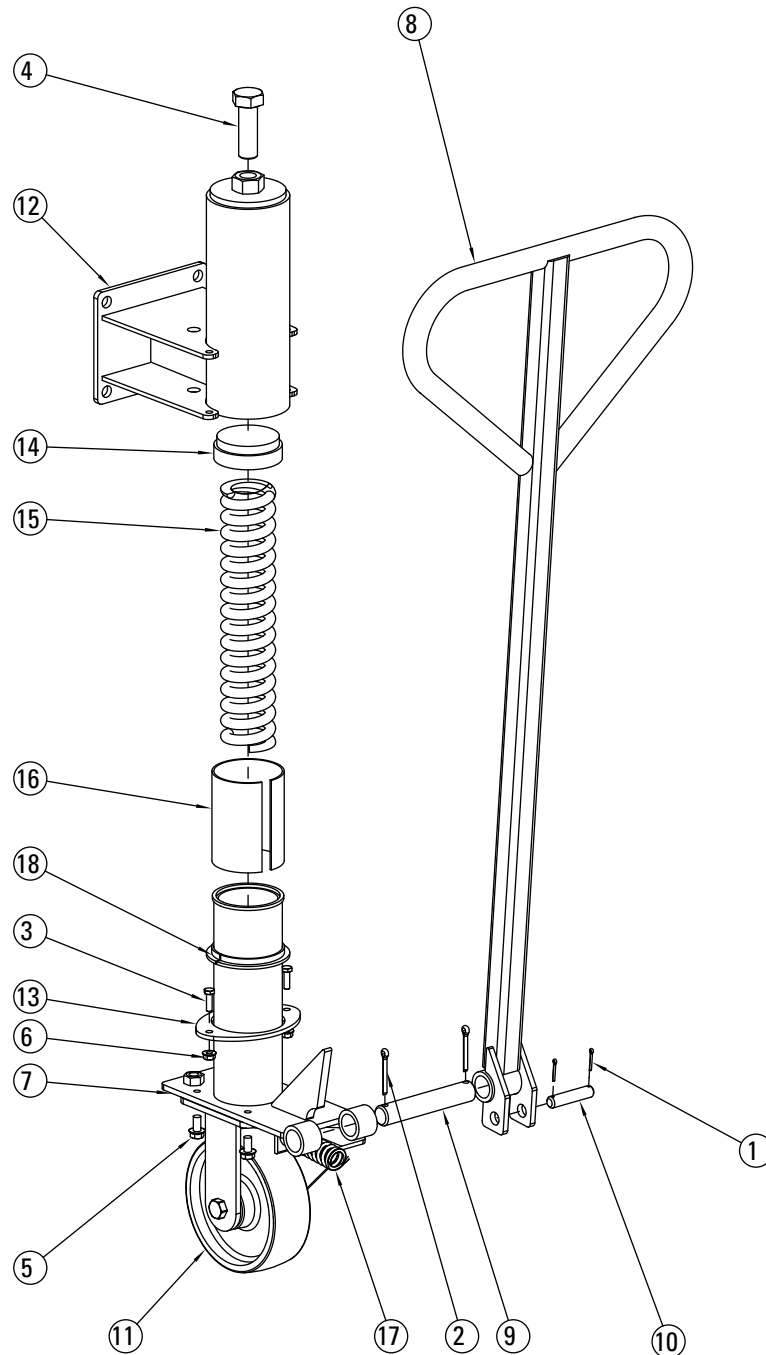
Item	Description	Part No.
1	Control Panel Assembly	M110063
2	Membrane Touchpad	FA7964
3	E-Stop Actuator	FA7962
4	Dual Push Button "Moeller"	FA7958-22
	Dual Push Button "Sprecher + Schuh"	Z150047
	Switch N.O. "Moeller"	M130091
	Switch N.O. "Sprecher + Schuh"	EXF0509121006
5	Single Push Button "Moeller"	FA7968
	Single Push Button "Sprecher + Schuh"	M130152
	Switch N.O. "Moeller"	M130091
	Switch N.O. "Sprecher + Schuh"	EXF0509121006
6	Plug	M130149
7	Control Board	FA7965
8	1/2" Hole Plug	FA7958-9
9	UI Board	FA7963
10	DC Disconnect Switch	FA7958-4
11	Cord Hanger	M120262
12	Upper Cover Assembly	M110060
13	Cover Weldment	M120163
14	Side Panel Assembly	M110061
15	Communications Connection Port	FA7958-17
16	Cord	M130116
17	Strain Relief	FA7958-28

18	Self Tapping Screw	M130132
19	Fork Lift Bracket Assembly	M120235
20	NA	NA
21	Charger Internal Power Cord	M130115



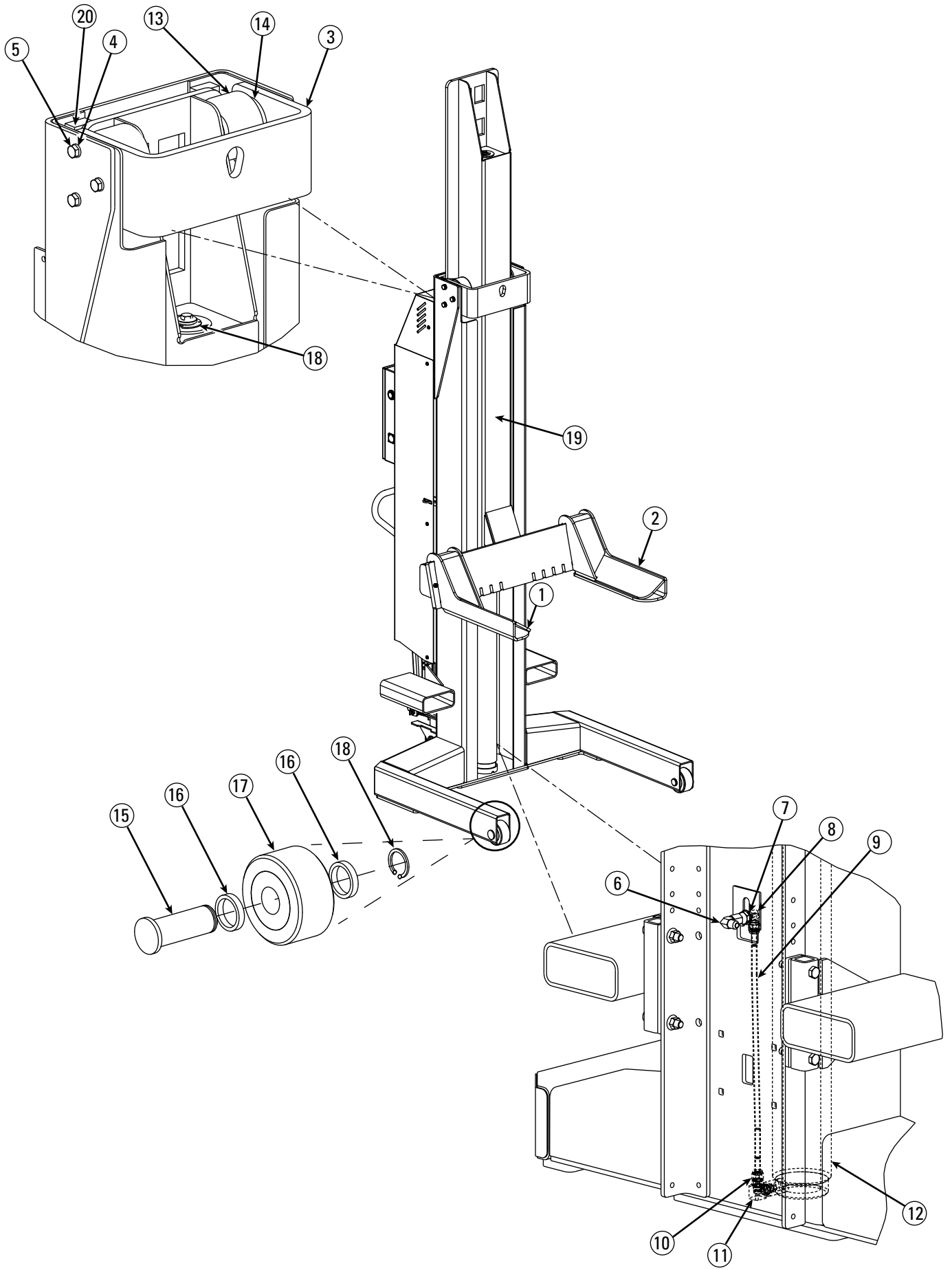
Item	Description	Part No.
1	3/32" x 3/4" Lg COTTER PIN	41168
2	3/16" x 1-1/2" Lg COTTER PIN	41248
3	M6x1.0x20mm Lg. HHCS PLTD	41413
4	M20x2.5 x 60mm HHCS FULL THREAD GRD. 8.8, PLTD	M130129
5	M8 X 16mm SERRATED HEX FLGD CS, PLTD	41597
6	M6x1.0 HEX FLGD WZLOCK NUT	41618
7	STEERING WHEEL WELDMENT	D21000Y
8	HANDLE WELDMENT	D22000Y

9	STEERING WHEEL HINGE PIN	D22001Y
10	SPRING PIN	D22002Y
11	M6.2 STEERING WHEEL	D22104Y
12	CASTER MOUNTING WELDMENT	M120049
13	CASTER RETAINER PLATE	M120075
14	SPRING CAP WELDMENT	M120077
15	CASTER SPRING	M130010
16	UHMW BEARING SHEET	M130019
17	BRAKE SPRING	M130020
18	FLANGE BEARING	M130027

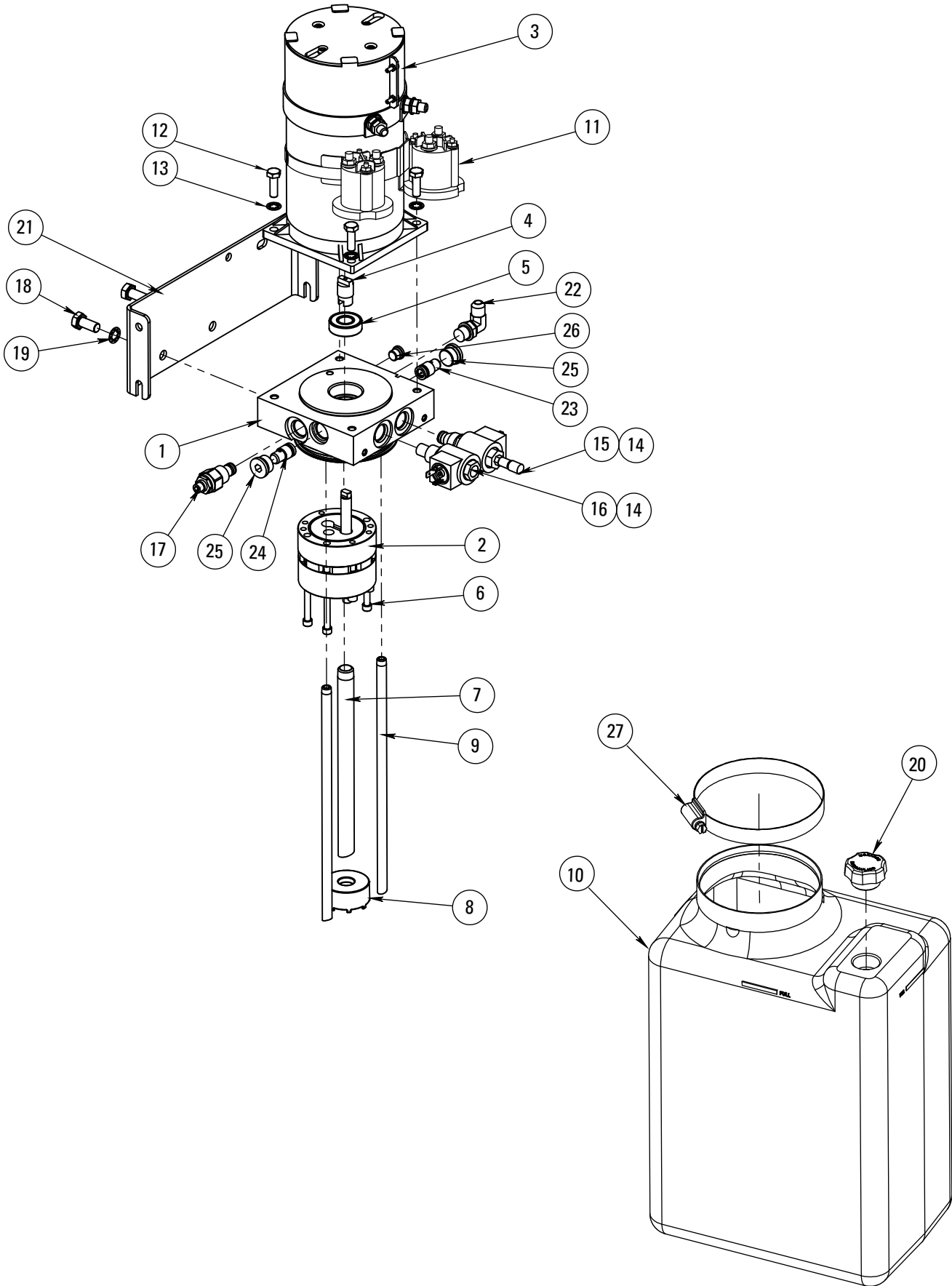


Item	Description	Part No.
1	RH Fork Weldment	M120366
2	LH Fork Weldment	M120365
3	Roller Support Weldment	D13100Y
4	M12 Lock Washer	41595
5	M12 x 1.75 x 30mm Lg. HHCS Grade 8.8, PLTD	41684
6	Swivel Nut Elbow #6	M130028
7	9/16" Internal Tooth Lock Washer, PLTD	40998
8	Bulkhead Union Elbow #6	T140138

9	Cylinder Hydraulic Tube	M130009
10	Adapter	FJ7352-3
11	Velocity Fuse	M130016
12	Hydraulic Cylinder	M130001Y
	Cylinder Seal Kit	M130130
13	Roller	D12201Y
14	Slider	FC5905-4Y
15	Leg Wheel Axle	D10001Y
16	Spacer Tube	D10002Y
17	Leg Wheel Assembly	D10010Y
18	Clip Ring	41417
19	Carriage Assembly	M110114Y
20	Column Thrust Bearing	D15001Y



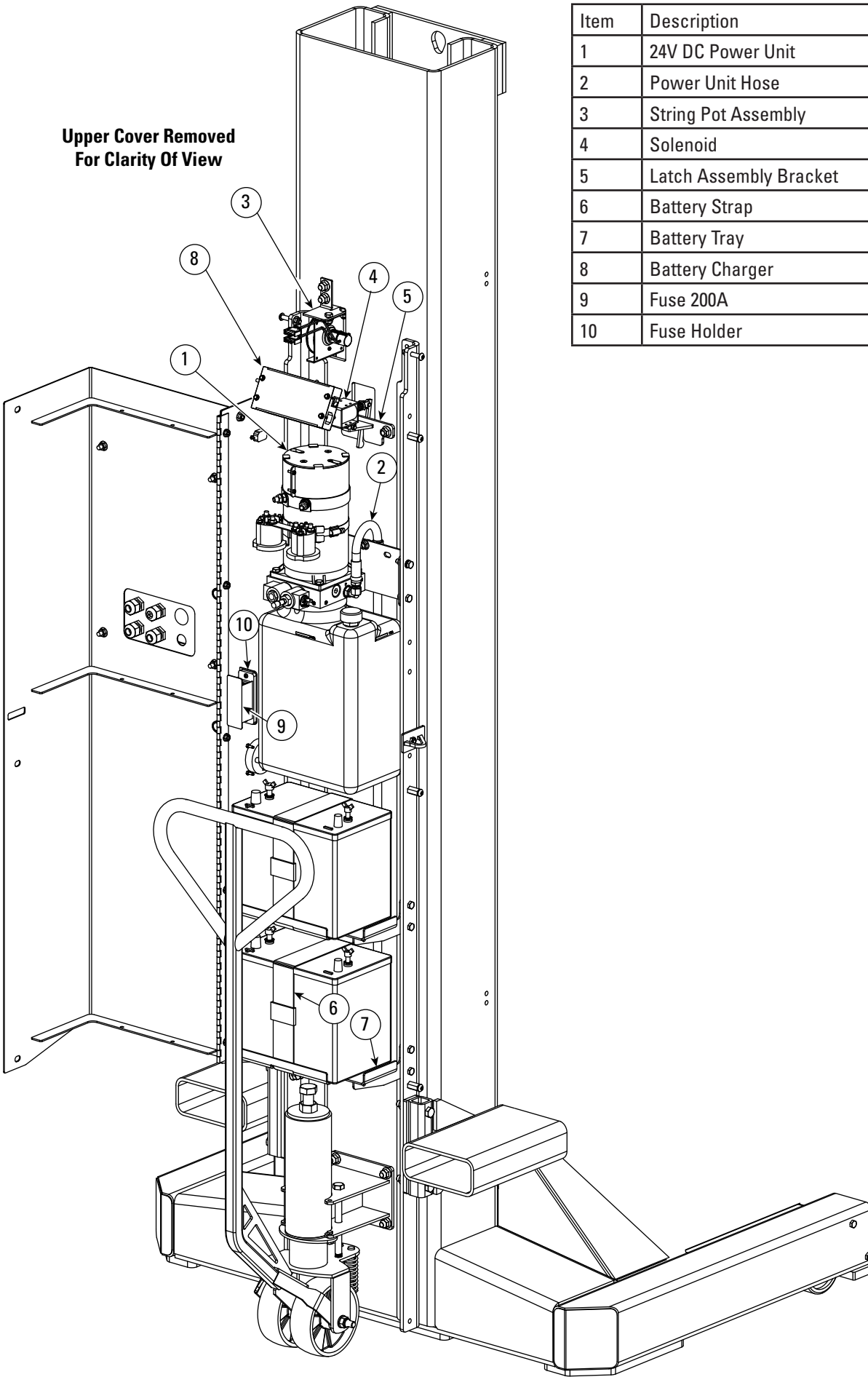
P3587 Power Unit



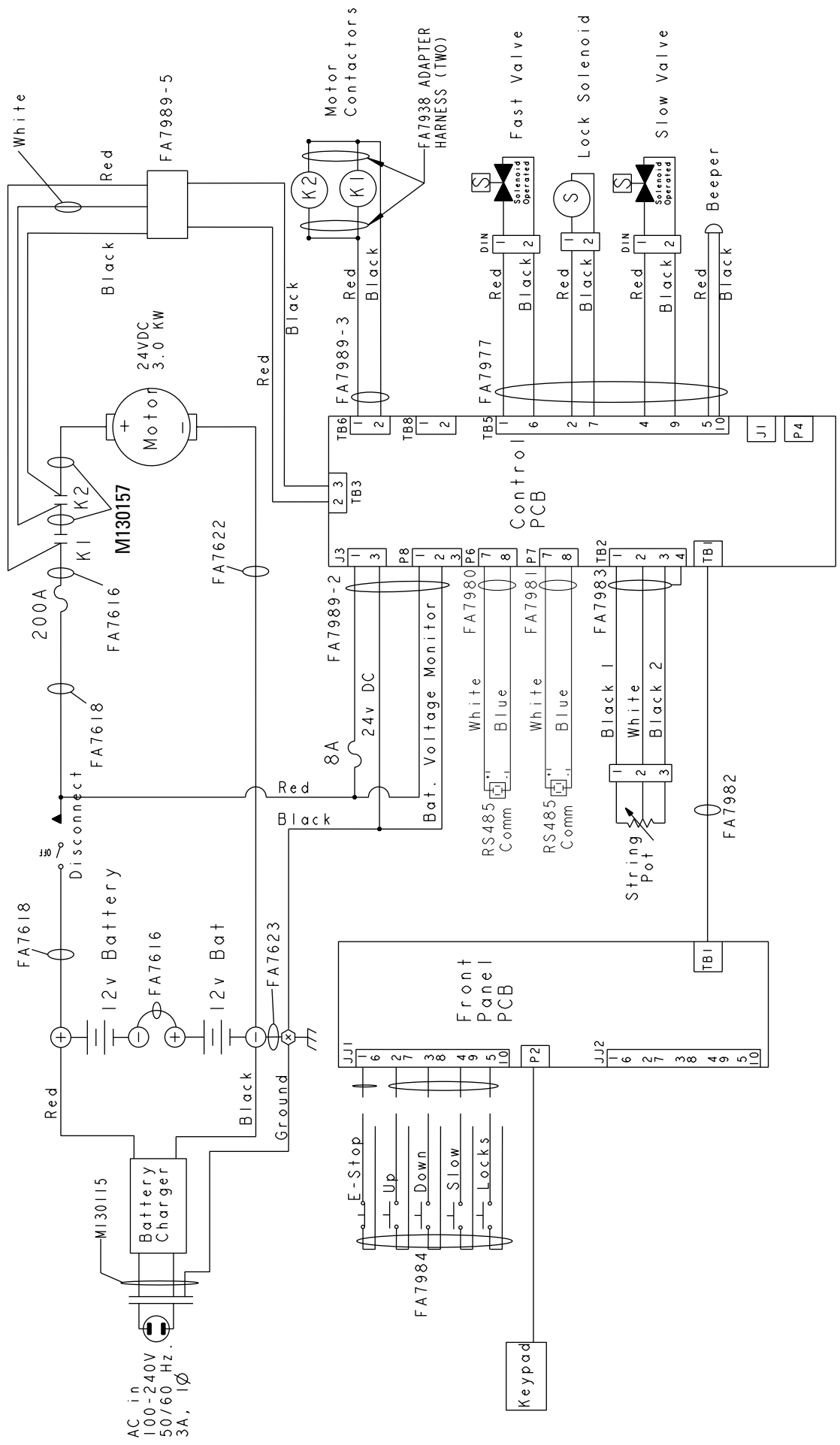
P3587 Power Unit

Item	Description	Part No.
1	Base Assy. M3519,MOD. (2) 2W/2P	P-3587-1
2	P Assy. QM MDLR, DC, BRGS BLD RSV	P-3570-2
3	MOTOR, DC, 24 VOLT 2 TERM	P-3570-3
4	SHAFT, INTERMEDIATE, MOD, SPCL DC	P-3570-4
5	BEARING, MOTOR TO BASE, M-SERIES	P-3570-5
6	SCREW, SHC, 1/4-20 x 3.0, BLK OX.	P-3570-6
7	TUBE, SUCTION, POLY TANK	P3580-14
8	FILTER ASSY. SUCTION, SHROUD	P-3570-8
9	TUBE, RETURN	P3580-10
10	POLY RESERVOIR	P3580-19
11	24V RELAY	M130090
12	SCREW, H.H. CAP, M8-1.25 x 25	P-3570-12
13	WASHER, STAR LOCK, 5/16	P-3570-13
14	COIL, 24VDC, #8, HIRSCHMAN, LOW WT	P-3570-14
15	CARTRIDGE, 2W/2P, NC, POPPET, #8	P3580-7
16	CARTRIDGE, 2W/2P, NC, POPPET, 4000	P3580-8
17	VALVE, RELIEF	P3587-3
18	SCREW, H.H. CAP, M10-1.50 x 22	P-3570-18
19	WASHER, INTERNAL TOOTH LOCK, 3/8	P-3570-19
20	BREATH-FILLER PLUG, POLY TANK	P3580-21
21	BRACKET, MTG PLT, 3.22 CNTR	P-3570-21
22	FITTING, ELBOW, 90 DEG, 37 DEG	P-3570-22
23	POPPET ASSY, P CMP FL, GPM .75	P-3570-23
24	POPPET ASSY, P CMP FL, GPM 1.5	P-3570-24
25	PLUG, SAE O-RING, 3/4-16, HEX SOC	P-3570-25
26	PLUG, SAE O-RING, 7/16-20 HEX, SO	P-3570-26
27	WORM CLAMP, POLY TANK	P3580-20

Upper Cover Removed
For Clarity Of View



Item	Description	Part No.
1	24V DC Power Unit	P3587
2	Power Unit Hose	M130029
3	String Pot Assembly	M110009
4	Solenoid	M130017
5	Latch Assembly Bracket	M120067Y
6	Battery Strap	M130032
7	Battery Tray	M120167Y
8	Battery Charger	FA7958-48
9	Fuse 200A	FA7958-6
10	Fuse Holder	FA7958-50



NOTES

NOTES

Installer: Please return this booklet to literature package, and give to lift owner/operator.

Thank You

Rotary World Headquarters

2700 Lanier Drive
Madison, IN 47250, USA
www.rotarylif.com

North America Contact Information

Tech. Support:
p 800.445.5438
f 800.578.5438
e userlink@rotarylif.com
Sales: p 800.640.5438
f 800.578.5438
e userlink@rotarylif.com

World Wide Contact Information

World Headquarters/USA: 1.812.273.1622
Canada: 1.905.812.9920
European Headquarters/Germany: +49.771.9233.0
United Kingdom: +44.178.747.7711
Australasia: +60.3.7660.0285
Latin America / Caribbean: +54.3488.431.608
Middle East / Northern Africa: +49.771.9233.0

© Vehicle Service GroupSM

Printed in U.S.A., All Rights Reserved. Unless otherwise indicated, ROTARY, and all other trademarks are property of Dover Corporation and its affiliates.

