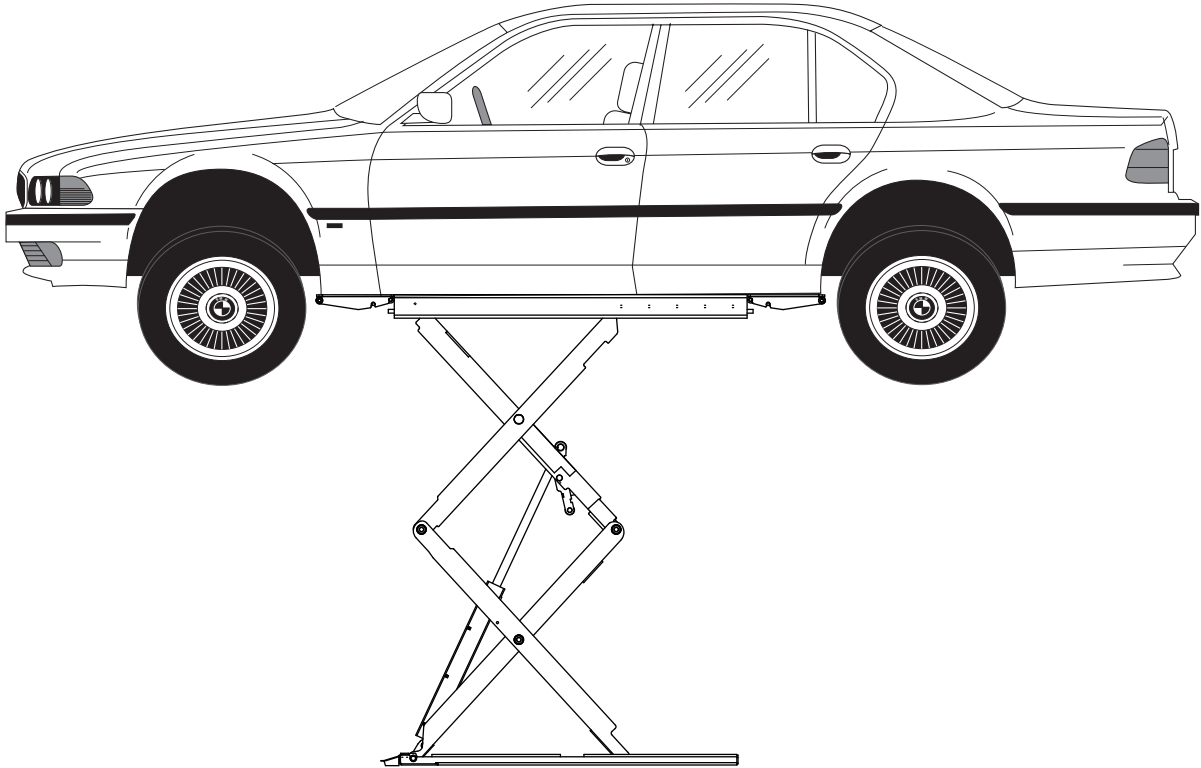


# Parts Breakdown

## Double Section Scissor Lift

### (000 Series)

Capacity 7,700 lbs (3,500 kg)  
(Maximum 3,850 lbs (1,750 kg) per pad)



**OWNERS RECORD**  
Complete information  
at right and keep in  
a safe place.

Date Installed \_\_\_\_\_

Installed in Bay # \_\_\_\_\_

Power Unit Serial # \_\_\_\_\_

Power Unit Model # \_\_\_\_\_

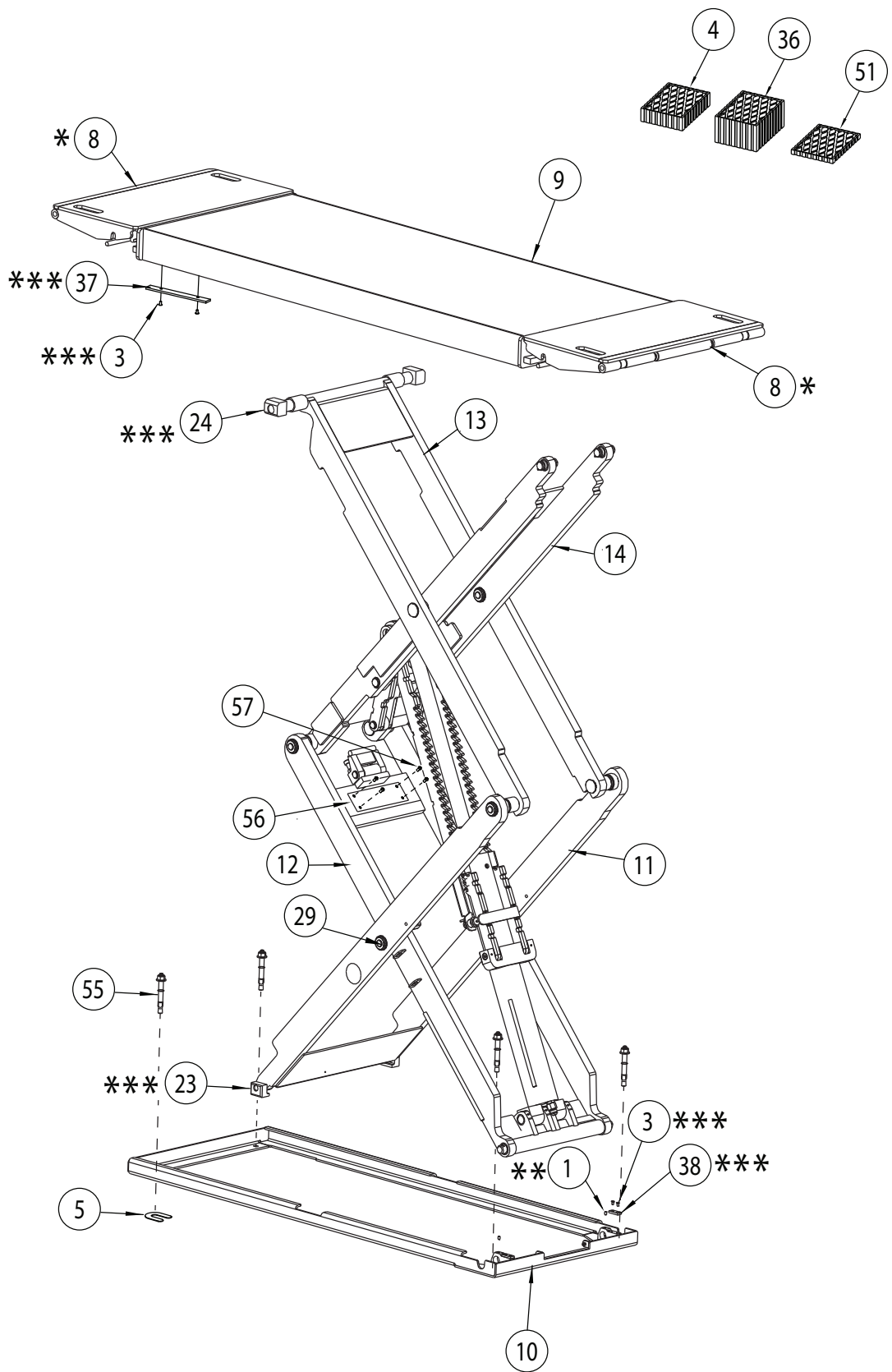
Lift Serial # \_\_\_\_\_

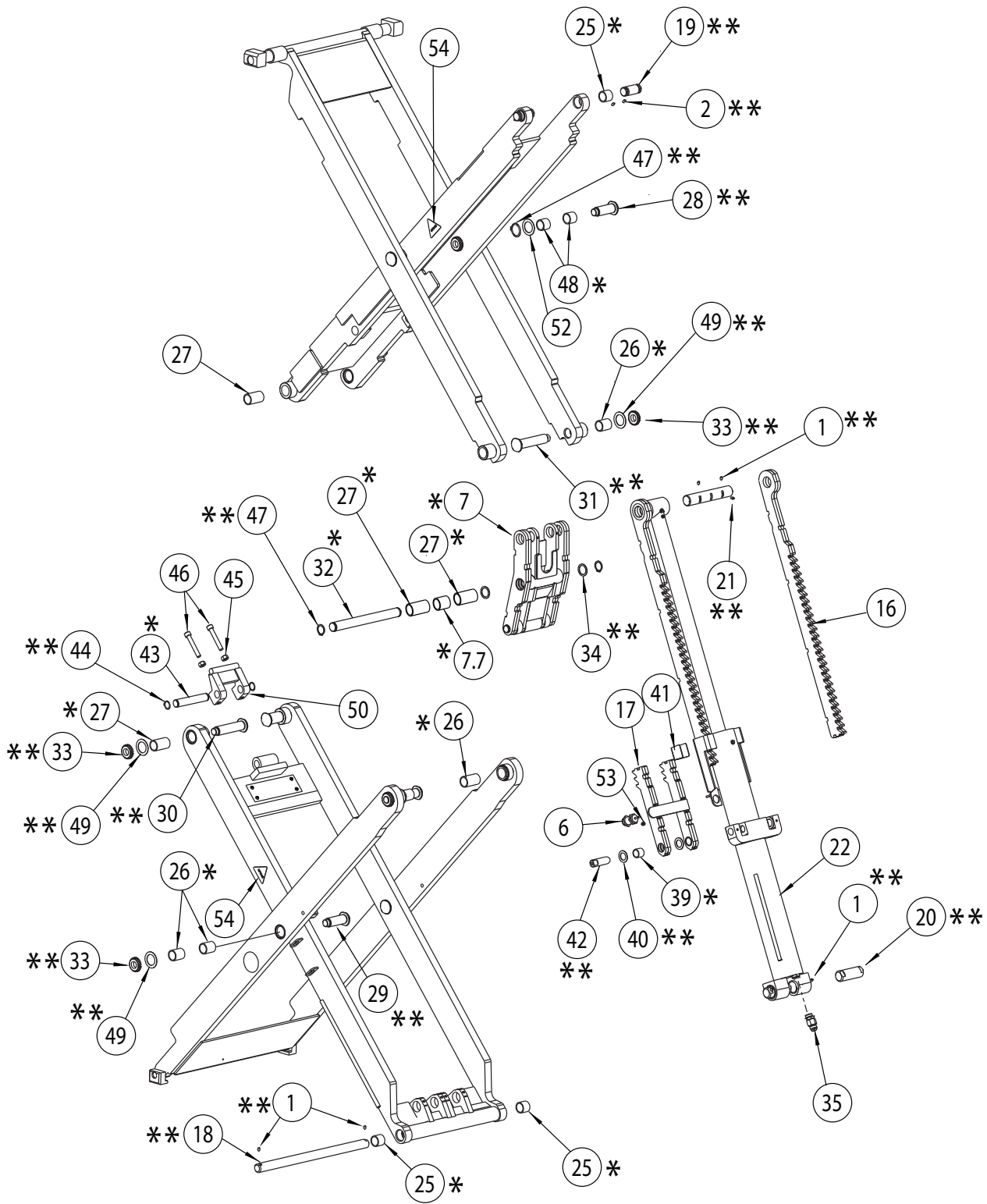
Lift Model # \_\_\_\_\_

**NOTE: For replacement parts -See your nearest Rotary Parts Distributor.**

**LP20632**

ITEM	PART NO.	DESCRIPTION
1	B21-6X10	HEX SOCKET SET SCREW WITH FLAT HEAD M6X10
2	B22-6X10	HEX SOCKET HEAD SCREW WITH POINT HEAD M6X10
3	B26-5X10	SOCKET FLAT HEAD COUNTERSUNK MS M5X10
4	FJ2427	RUBBER BLOCK
5	30400-1025	SHIM
6	ML50-1605	LOCK RELEASE AIR CYLINDER
7	XX110001	KICKER ASSEMBLY
8	XX110003	RAMP ASSEMBLY
9	XX120001	PLATFORM WELDMENT
10	XX120002	BASE WELDMENT
11	XX120003	SCISSOR LEG WELD
12	XX120004	SCISSOR LEG WELD
13	XX120005	SCISSOR LEG WELD
14	XX120006	SCISSOR LEG WELD
16	XX120023	LIFT LOCKS WELDMENT
17	XX120024	LOCK JAW BAR WELD
18	XX130080	PIN, LONG
19	XX130081	PIN, LONG
20	XX130082	LOWER CYLINDER PIN
21	XX130086	UPPER CYLINDER PIN
22	XX140005	CYLINDER
23	XX140007	SLIDER BLOCK(LOWER)
24	XX140008	UPPER SLIDER BLOCK
25	XX140014Y	BEARING, 25 DIAM. X 25 LONG
26	XX140015Y	BEARING, 25 DIAM. X 35 LONG
27	XX140019Y	BEARING, 25 DIAM. X 50 LONG
28	XX140021	UPPER CENTER PIN
29	XX140022	LOWER CENTER PIN
30	XX140023	PIN, LONG
31	XX140024	PIN, SHORT
32	XX140025	KICKER CENTER PIN
33	XG130007	M20x1.0 SLOTTED ROUND LOCKNUT
34	XX140029	WASHER, THIN PLASTIC
35	XX140064	VELOCITY FUSE
36	FJ2428	RUBBER BLOCK
37	XX140047	PLATFORM BUMPER
38	XX140048	PLATFORM RAIL
39	XX140053Y	BEARING, 20 DIAM. X 20 LONG
40	XX140054	WASHER, THIN PLASTIC
41	XX140055	SLIDER BLOCK
42	XX140056	PIN
43	XX130214	PIN
44	B60-20	SNAP RING
45	B30-10	NUT
46	B201-10X65	HEX BOLT M10 X 65
47	B63-25	SNAP RING
48	XX140062	BEARING, 25 DIAM. X 30 LONG
49	K35-7010	Ø19 WASHER
50	XX130210	CUSHION WELDMENT
51	SB700071Y	RUBBER BLOCK
52	B41-24	Ø24 WASHER
53	B35-5	M5 NUT
54	NP945	NAMEPLATE
55	FJ1009	ANCHOR
56	XX130225	STAINLESS STEEL PLATE
57	B25-6X12	M6 X 12 SCREW

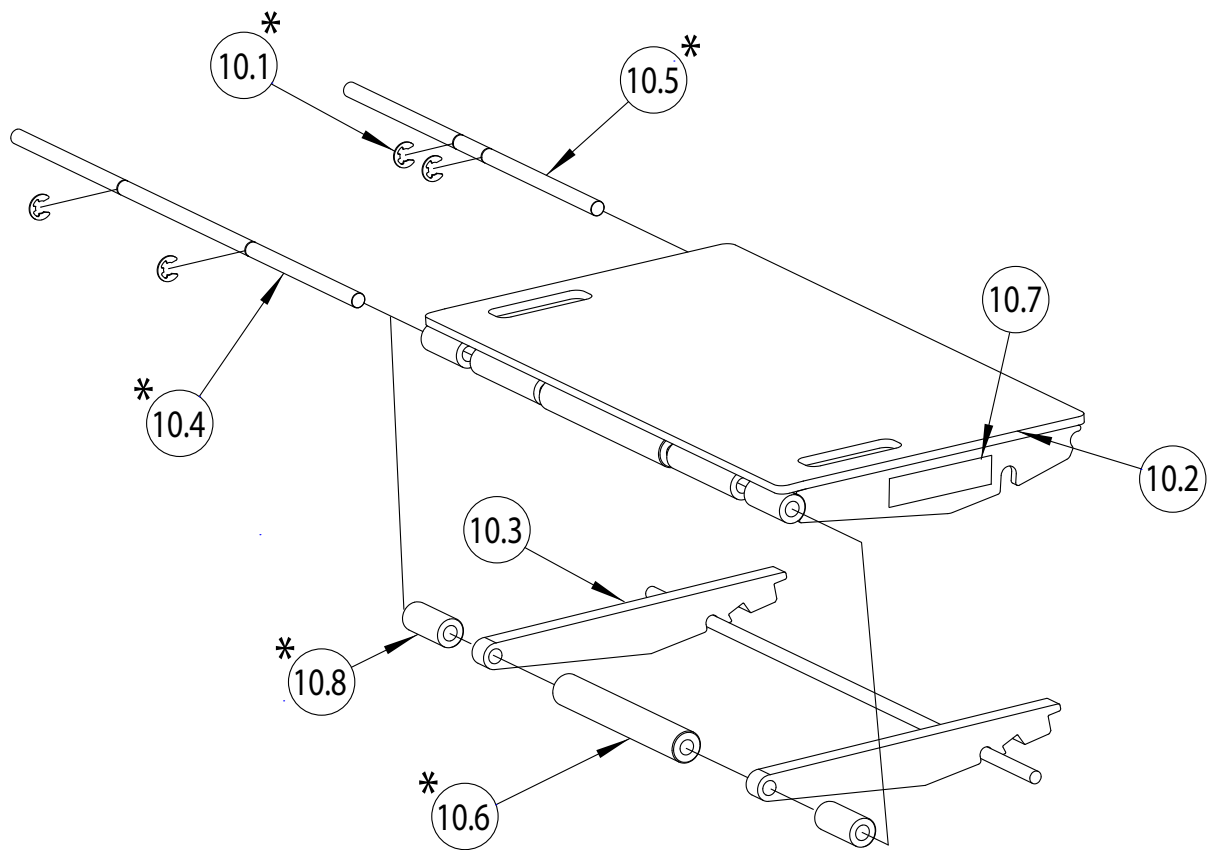




\* NOTE: XX100011 REPLACEMENT BEARING KIT INCLUDES ANNOTATED BEARINGS ABOVE FOR **ONE** PLATFORM. FOR ENTIRE LIFT **TWO** BEARING KITS MUST BE ORDERED.

\*\* NOTE: XX100007 REPLACEMENT PIN KIT INCLUDES ANNOTATED PINS ABOVE FOR **ONE** PLATFORM. FOR ENTIRE LIFT **TWO** PIN KITS MUST BE ORDERED.

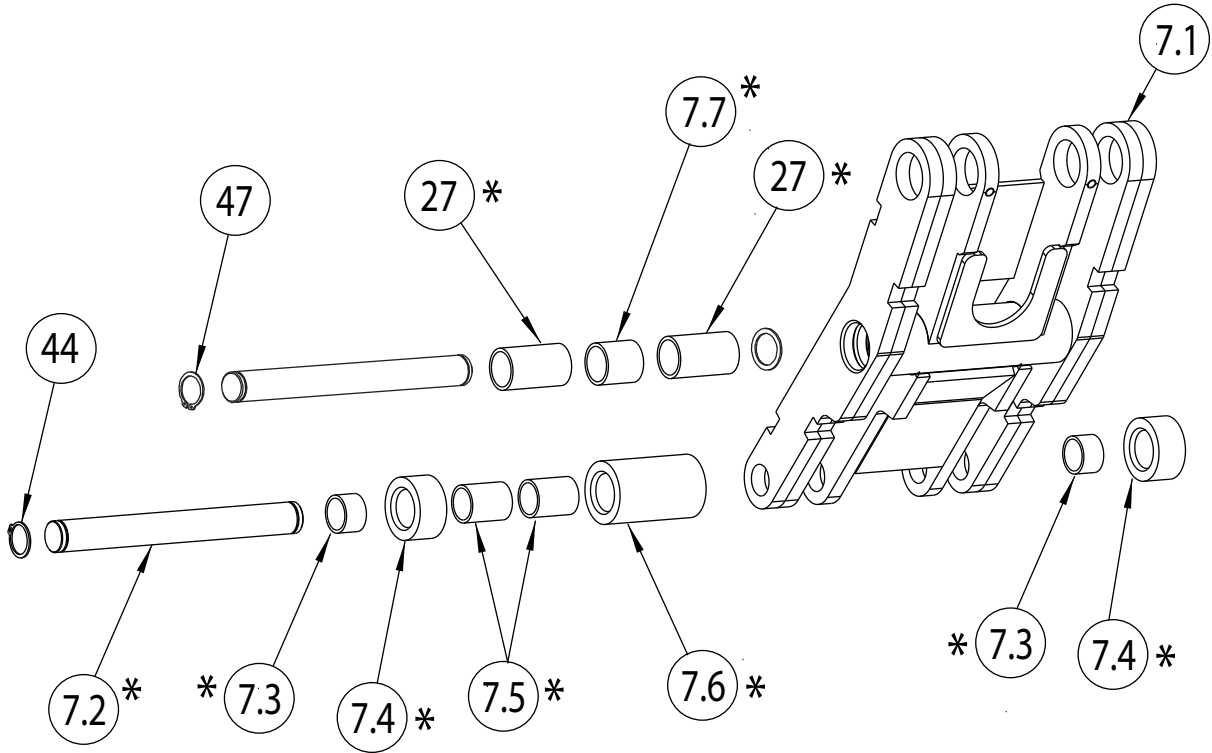
\*\*\* NOTE: XX100017 REPLACEMENT SLIDER KIT INCLUDES ANNOTATED SLIDERS ABOVE FOR **BOTH** PLATFORMS (ENTIRE LIFT).



## RAMP ASSEMBLY

ITEM	PART NO.	DESCRIPTION
10.1	B61-12	E-CLIP 14MM
10.2	XX120007	RAMP WELDMENT
10.3	XX120008	RAMP SUPPORT WELDMENT
10.4	XX130063	RAMP ROLLER SHAFT
10.5	XX130064	RAMP ROLLER SHAFT
10.6	XX140009	RAMP ROLLER
10.7	NP1207	NAME PLATE
10.8	XX130236	SMALL ROLLER

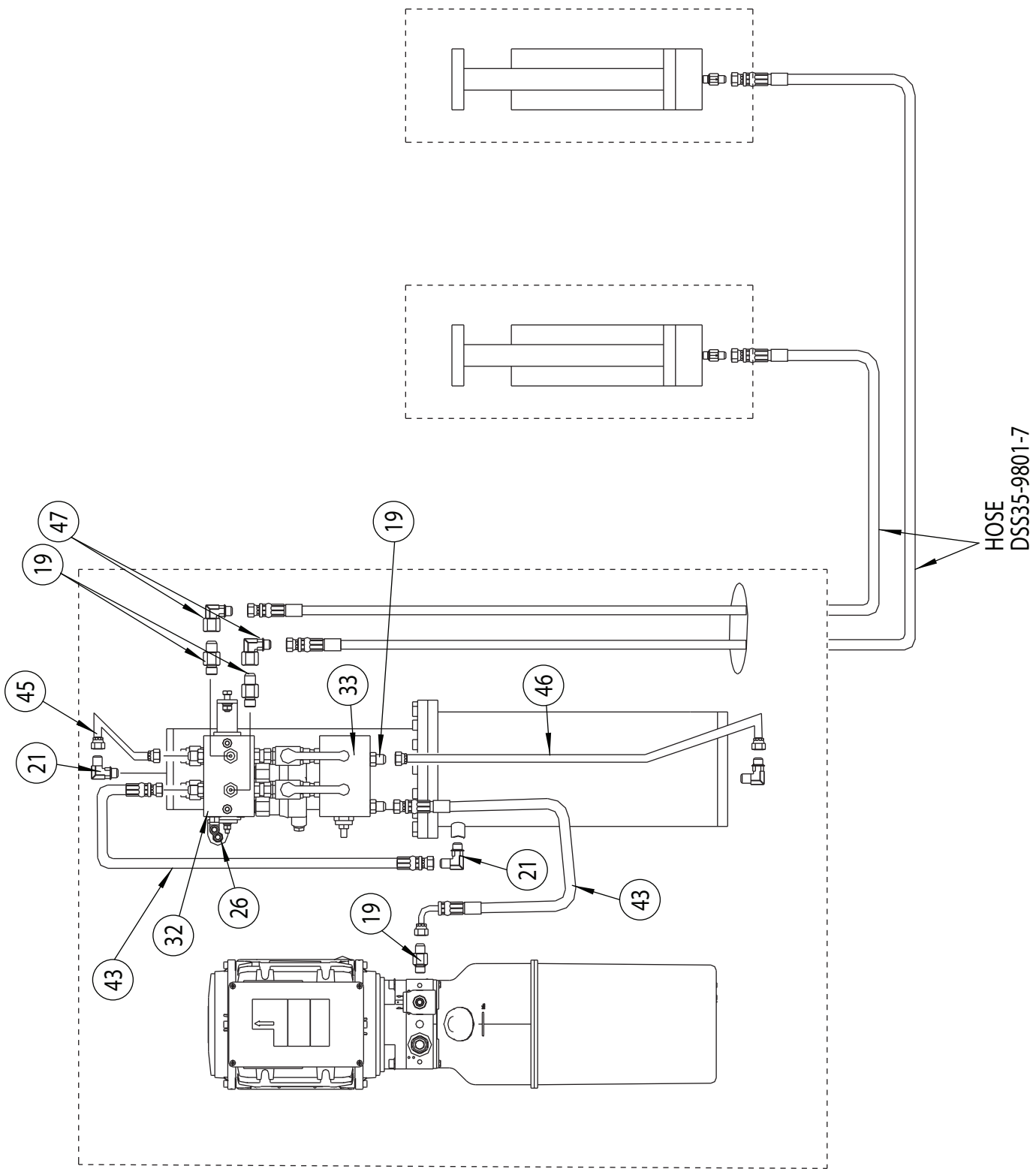
\* NOTE: XX100010 REPLACEMENT RAMP ROLLER KIT INCLUDES ANNOTATED ROLLER AND ROLLER SHAFT PARTS FOR FOUR RAMPS.

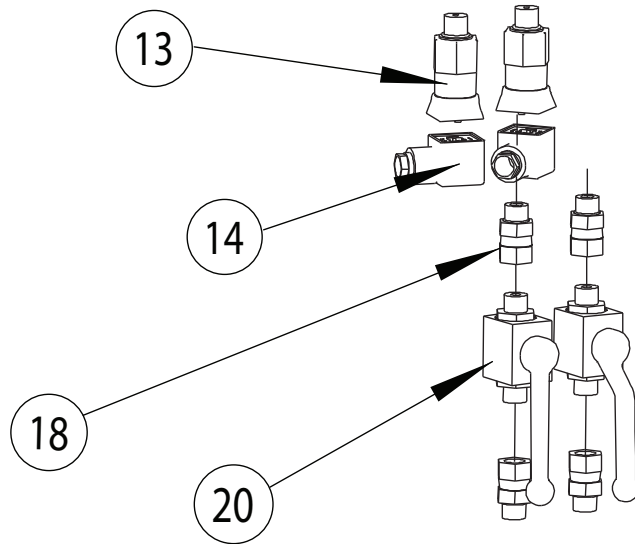


## KICKER ASSEMBLY

ITEM	PART NO.	DESCRIPTION
7.1	XX120009	KICKER WELD
7.2	XX130036	ROLLER PIN
7.3	XX140060	BEARING, 20 DIAM. X 15 LONG
7.4	XX140020	ROLLER
7.5	XX140059	BEARING, 25 DIAM. X 30 LONG
7.6	XX140004	ROLLER
7.7	XX140068Y	BEARING, 25 DIAM. X 30 LONG

\* NOTE: XX100008 REPLACEMENT ROLLER KIT INCLUDES ANNOTATED ROLLER SHAFT AND BEARING PARTS FOR TWO PLATFORMS.

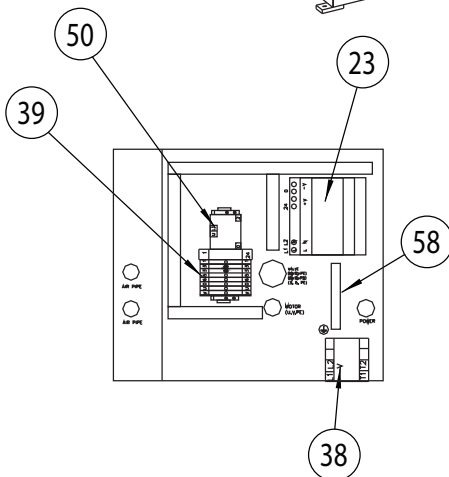
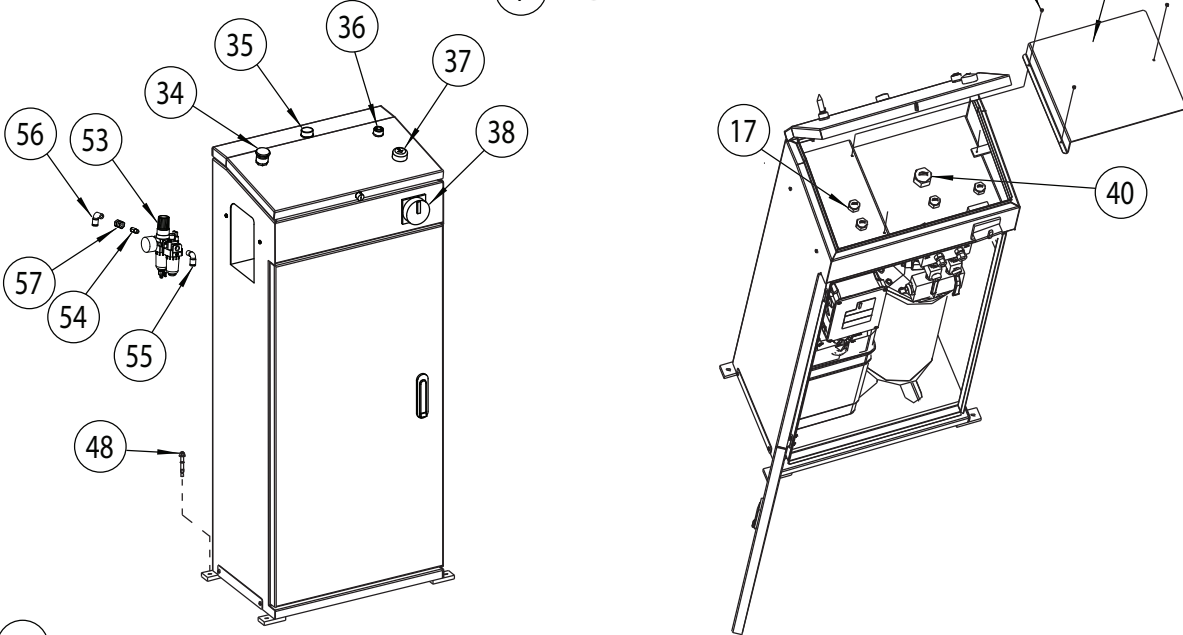
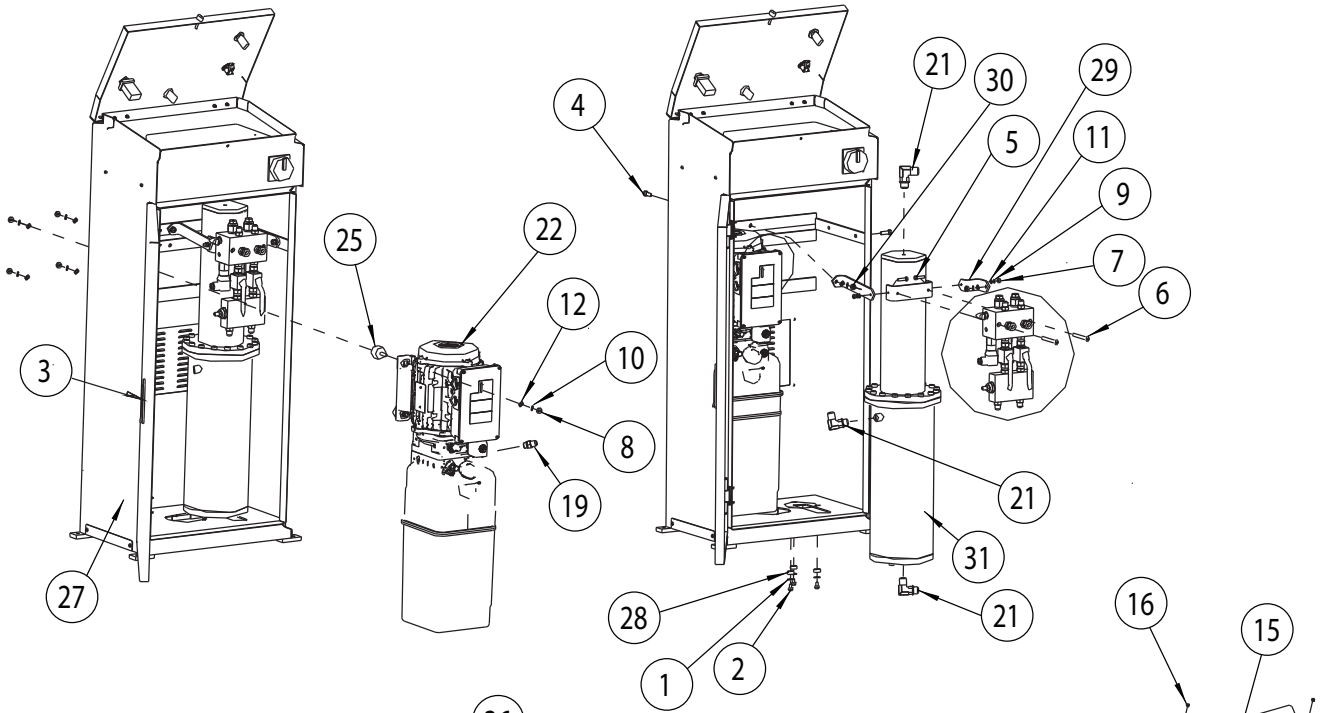




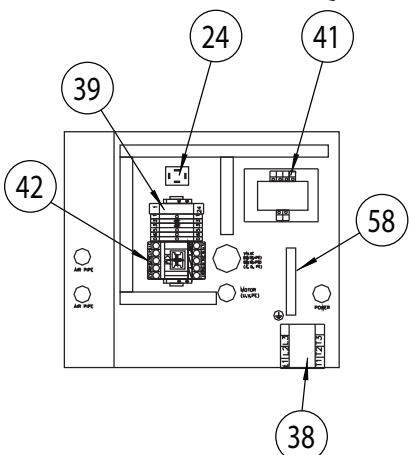
ITEM	QTY	PART NO.	DESCRIPTION
13	2	BAF-SR-65-C-H-9-UL	PRESSURE SWITCH
14	2	C18311N21	DIN CONNECTOR
18	4	DSS35-9802-1	FITTING
20	2	3288813	BALL VALVE



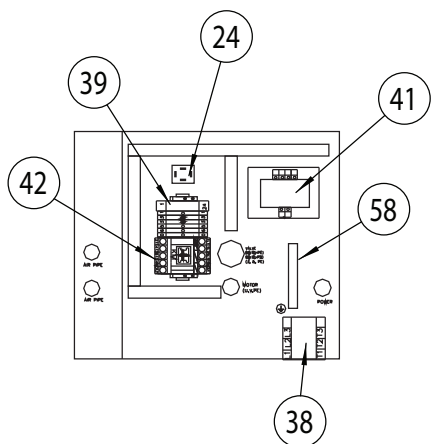
ITEM	PART NO.	DESCRIPTION
1	B42-8	8MM BIG WASHER
2	B10-6X12	FLANGE HEX BOLT M6X12
3	AB302	LOCK
4	B10-8X25	HEX HEAD BOLT M8X25
5	B10-6X25	HEX HEAD BOLT M6X25
6	B20-8X70	HEX SOCKET HEAD CAP SCREW M8X70
7	B30-6	HEX NUT M6
8	B30-8	HEX NUT M8
9	B40-6	LOCK WASHER 6
10	B40-8	LOCK WASHER 8
11	B41-6	FLAT WASHER 6
12	B41-8	FLAT WASHER
13	BAF-5R-6S-C-H-9-UL	PRESSURE SWITCH
14	C18311N21	DIN CONNECTOR
15	XX130195	ELECTRIC COVER
16	B23-4X6	SCREW 4X6, PHMS
17	PG135	CORD GRIP
18	DSS35-9802-1	FITTING
19	FJ7352-3	ADAPTER
20	3288813	BALL VALVE
21	SW-002	ELBOW FITTING
22	P3668	1Ø 60Hz 220V POWER UNIT
	P3671	1Ø 50Hz 220V POWER UNIT
	P3660	3Ø 50/60Hz 460V POWER UNIT
23	DQ-QJ-00053	SWITCH POWER SUPPLY (DR-100-24)
24	DQ-QJ-00056	BRIDGE RECTIFIER (KBPC2510)
25	PV-2005	POWER UNIT CONNECT ROD WITH BUMPER
26	EPC8-G02	AIR FITTING -Y
27	XX110014	CABINET, USA VERSION
28	XX130178	CABINET CYLINDER BUSHING
29	XX130179	CABINET CYLINDER BRACKET
30	XX130190	CABINET CYLINDER BRACKET
31	XX140058	MASTER CYLINDER
32	FKZJ-201C	MANIFOLD
33	FKZJ-201B	MANIFOLD
34	XX140065	LOCK RELEASE AIR VALVE
35	DQ-QJ-00038	POWER LIGHT
36	DQ-QJ-00002	RISE PUSH BUTTON (XX110018)
37	DQ-QJ-00001	DOWN PUSH BUTTON (XX110018)
38	DQ-QJ-00034	DISCONNECT SWITCH
39	DQ-QJ-00050	TERMINAL BLOCK (XX110017, XX110020)
	DQ-QJ-00055	TERMINAL BLOCK (XX110018)
40	AG-25W	LOCK NUT
41	XX100026	TRANSFORMER (XX110018)
	DQ-QJ-00035	TRANSFORMER (XX110018)
42	DQ-QJ-00005	CONTACTOR (XX110018)
43	DBS35-9801-1	HYDRAULIC HOSE
44	XX140064	VELOCITY FUSE
45	DSS35-9801-5HY	HYDRAULIC STEEL PIPE
46	DSS35-9801-6HY	HYDRAULIC STEEL PIPE
47	M130028Y	ELBOW FITTING
48	B14-3/8X70	CABINET ANCHOR
49	NA	NA
50	DQ-QJ-00052	POWER RELAY
51	DR-100-24	SWITCH POWER SUPPLY
52	KBPC2510	BRIDGE RECTIFIER
53	S130080	FILTER-REGULATOR-LUBRICATOR
54	FCS191-6	MALE CONNECTOR
55	EPL6-N02	MALE ELBOW
56	FC185-96	MALE ELBOW
57	FC147-1	FEMALE BULKHEAD
58	DQ-QJ-00046	GROUNDING BAR



XX110017, XX110020

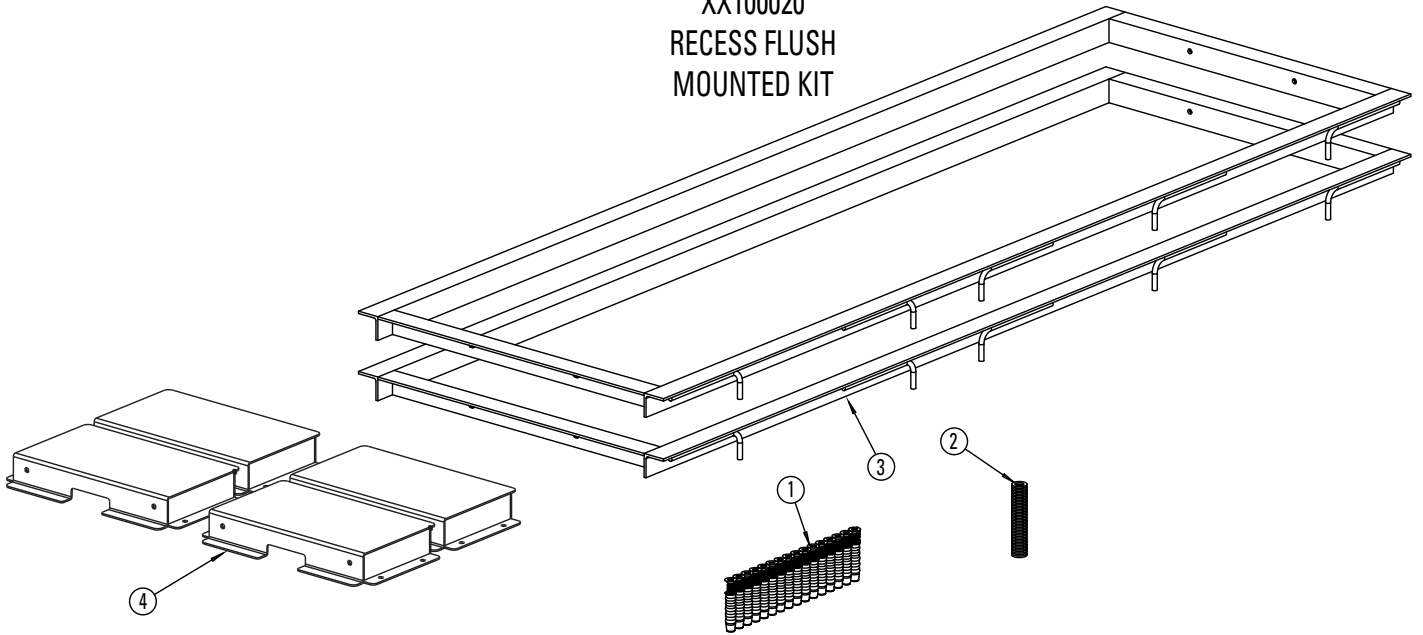


XX110018 WITH XX10026

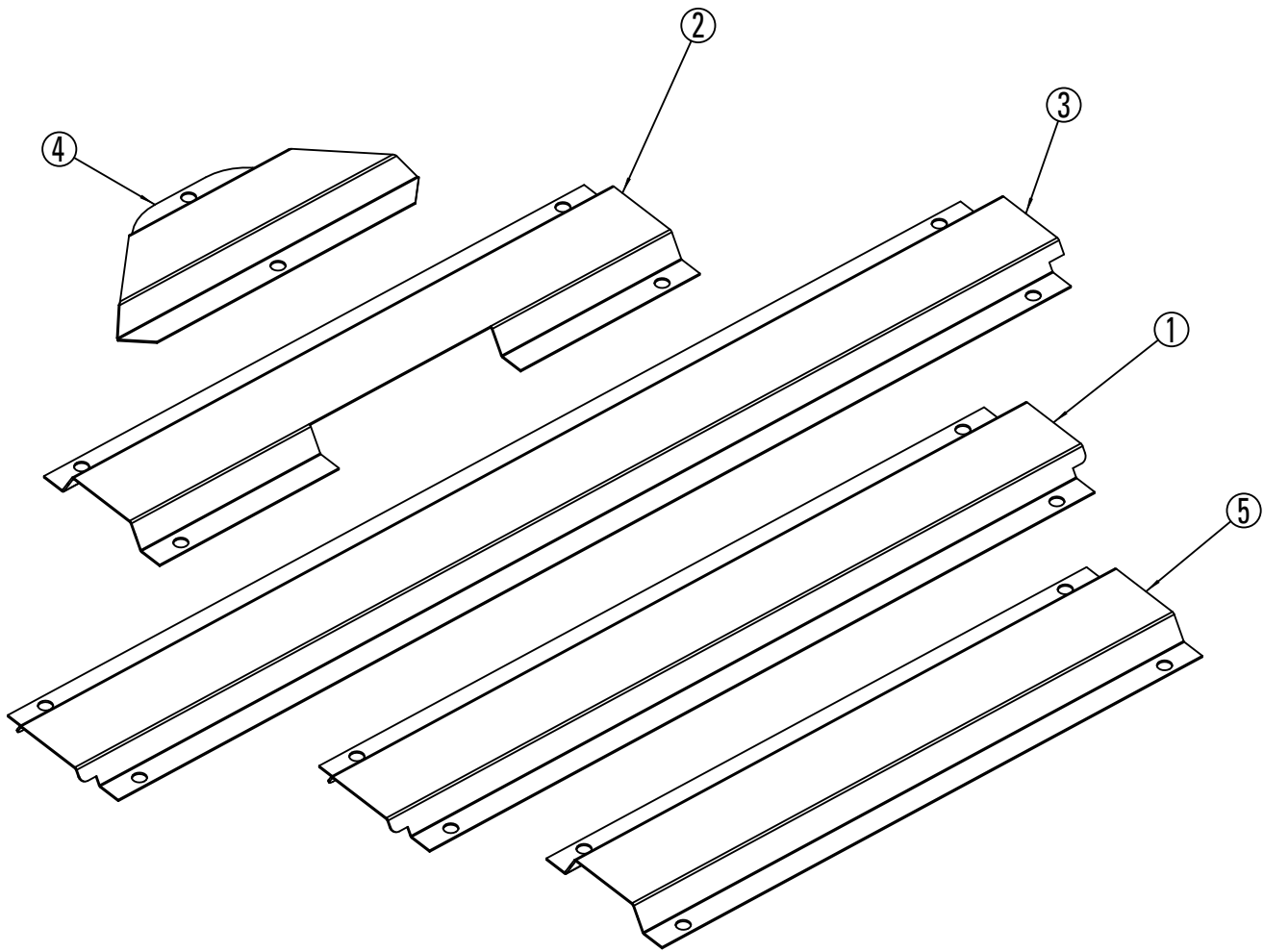


XX110018

XX100020  
RECESS FLUSH  
MOUNTED KIT



ITEM	QTY	PART NO.	DESCRIPTION
1	16	B14B-6X40	NYLON ANCHOR
2	16	B41-8	FLAT WASHER $\varnothing 8$
3	2	XX120022	RECESS WELDMENT



ITEM	QTY	PART NO.	DESCRIPTION
1	2	XX130091Y	HOSE COVER
2	2	XX130092Y	HOSE COVER
3	2	XX130111Y	HOSE COVER
4	1	XX130141Y	HOSE COVER 45°
5	2	XX130156Y	HOSE COVER

## Notes

## Notes

## Notes

**Vehicle Service Group<sup>SM</sup>**  
2700 Lanier Drive  
Madison, IN 47250, USA  
1-800-640-5438  
[www.vsgdover.com](http://www.vsgdover.com)



© **Vehicle Service Group<sup>SM</sup>**  
All Rights Reserved. Unless otherwise  
indicated, **Vehicle Service Group<sup>SM</sup>**,  
and all other trademarks are property  
of Dover Corporation and its affiliates.