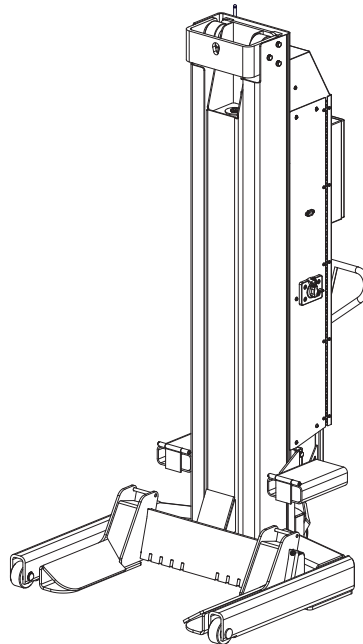


# HydroLift MC62

**Original Instructions  
Mobile Column Lift  
24V DC Powered**

**4 Column Lift Capacity 24,800 kg.  
6 Column Lift Capacity 37,200 kg.  
6,200 kg. per column**



**P  
A  
R  
T  
S  
  
B  
R  
E  
A  
K  
D  
O  
W  
N**

**IMPORTANT:** When ordering parts or requesting service always give exact model and power unit serial number. Model number is shown on nameplate attached to side of column. Power unit serial number is located on front of power unit.

**OWNERS RECORD**  
Complete information  
at right and keep in  
a safe place.

Date Installed \_\_\_\_\_

Installed in Bay # \_\_\_\_\_

Power Unit Serial # \_\_\_\_\_

Power Unit Model # \_\_\_\_\_

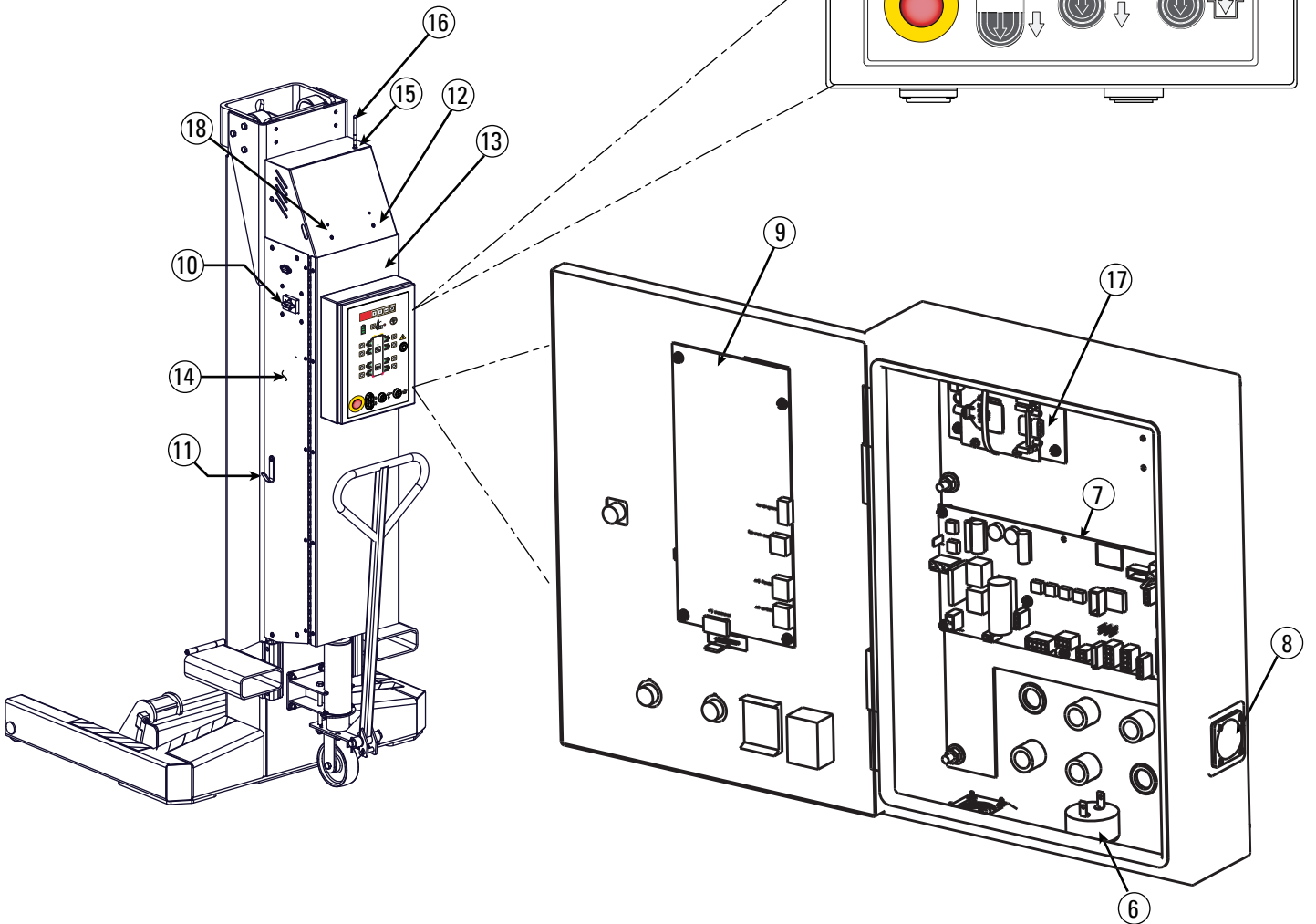
Lift Serial # \_\_\_\_\_

Lift Model # \_\_\_\_\_

**NOTE: For replacement parts -See your nearest Rotary Parts Distributor.**

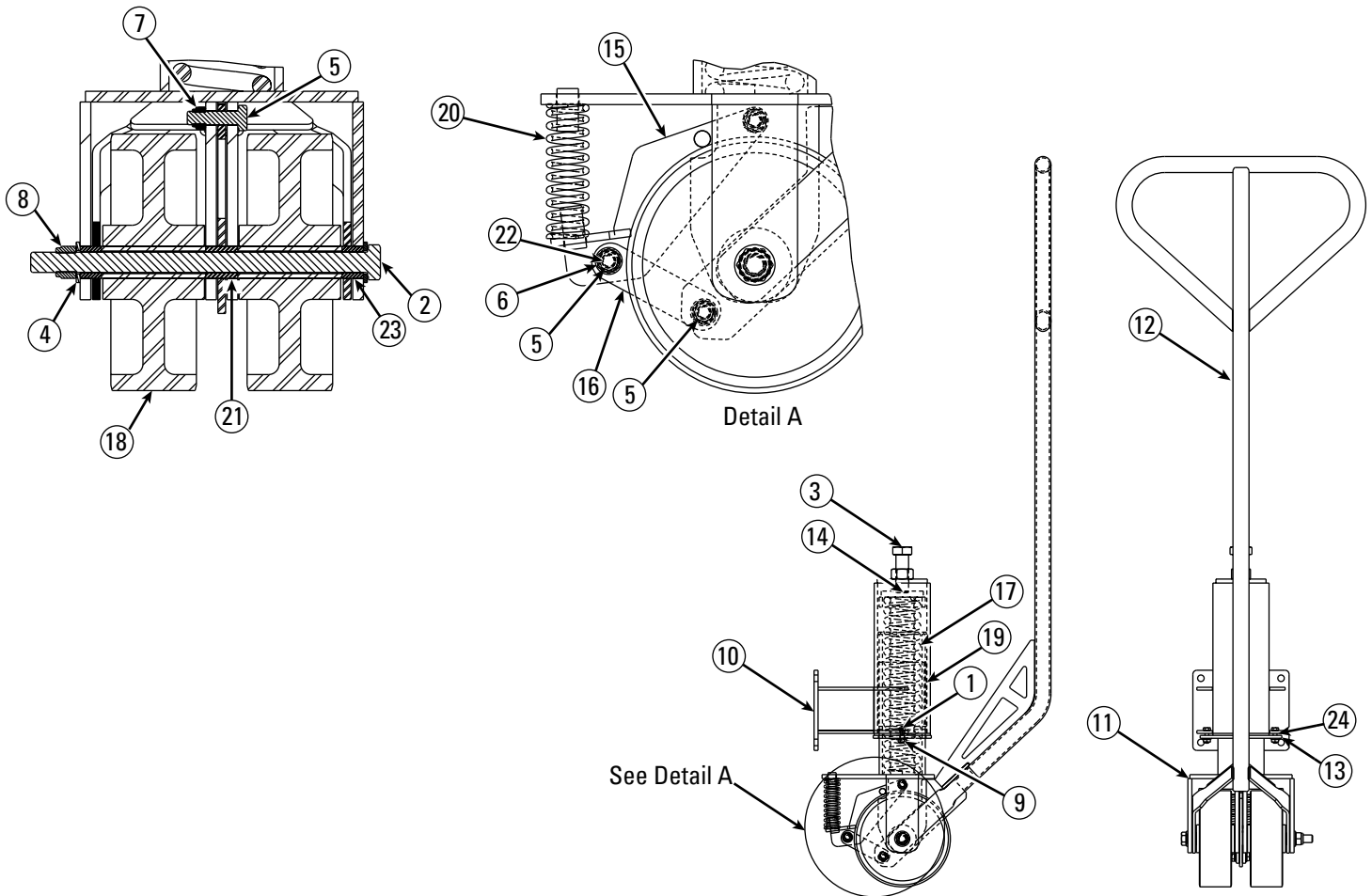
**PB161101N-A**  
Rev. 01/13/2021

Item	Description	Part No.
1	Control Panel Assembly	M110062Y
2	Membrane Touchpad	FA7964
3	E-Stop Actuator	FA7962Y
4	Dual Push Button	Z150047Y
5	Single Push Button	M130152Y
6	Audible Single Device	FA7974Y
7	Control Board	FA7965
8	Hole Plug	FA7958-10Y
9	UI Board	FA7963
10	Main Switch	D32001Y
11	Cord Hook	M120189Y
12	Upper Cover Assembly	D31000Y-B
13	Cover Weldment	M120163Y
14	Side Panel Assembly	D32000Y
15	RP SMA Jack Bulkhead	M130072Y
16	RF Antenna	M130074Y
17	Modem Assembly	M110151NY-CE
18	HSP Screw	B25-5X12

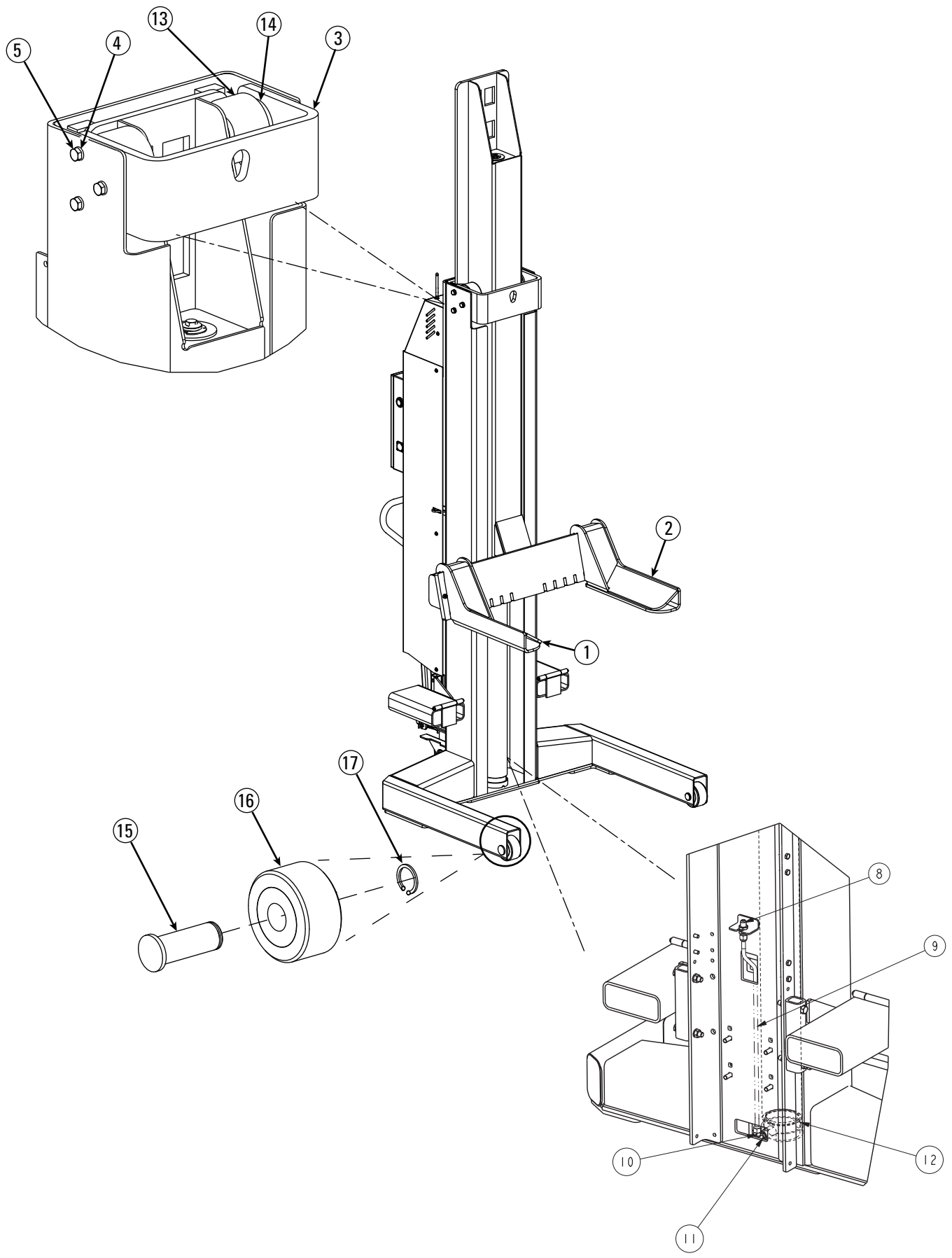


Item	Description	Part No.
1	M6 x 1.0 x 25mm Lg. HHCS, PLTD	B11-6X25
2	M12 x 1.75 x 200mm Lg. HHCS Grade 8.8, PLTD	41483
3	M20 x 2.5 x 60mm HHCS Full Thread Grade 8.8, PLTD	M130129Y
4	M12 Flat Washer	41520
5	M8 x 125 x 30mm Lg. HHCS	41539
6	M8 Flat Washer	41548
7	M8 x 125 Hex Nylon Insert Locknut	41563
8	M12 x 1.75 Hex Nylon Insert Lock Nut PLTD	41568
9	M6 x 1.0 Hex FLGD WZLock Nut	41618
10	Caster Mounting Weldment	M120049Y

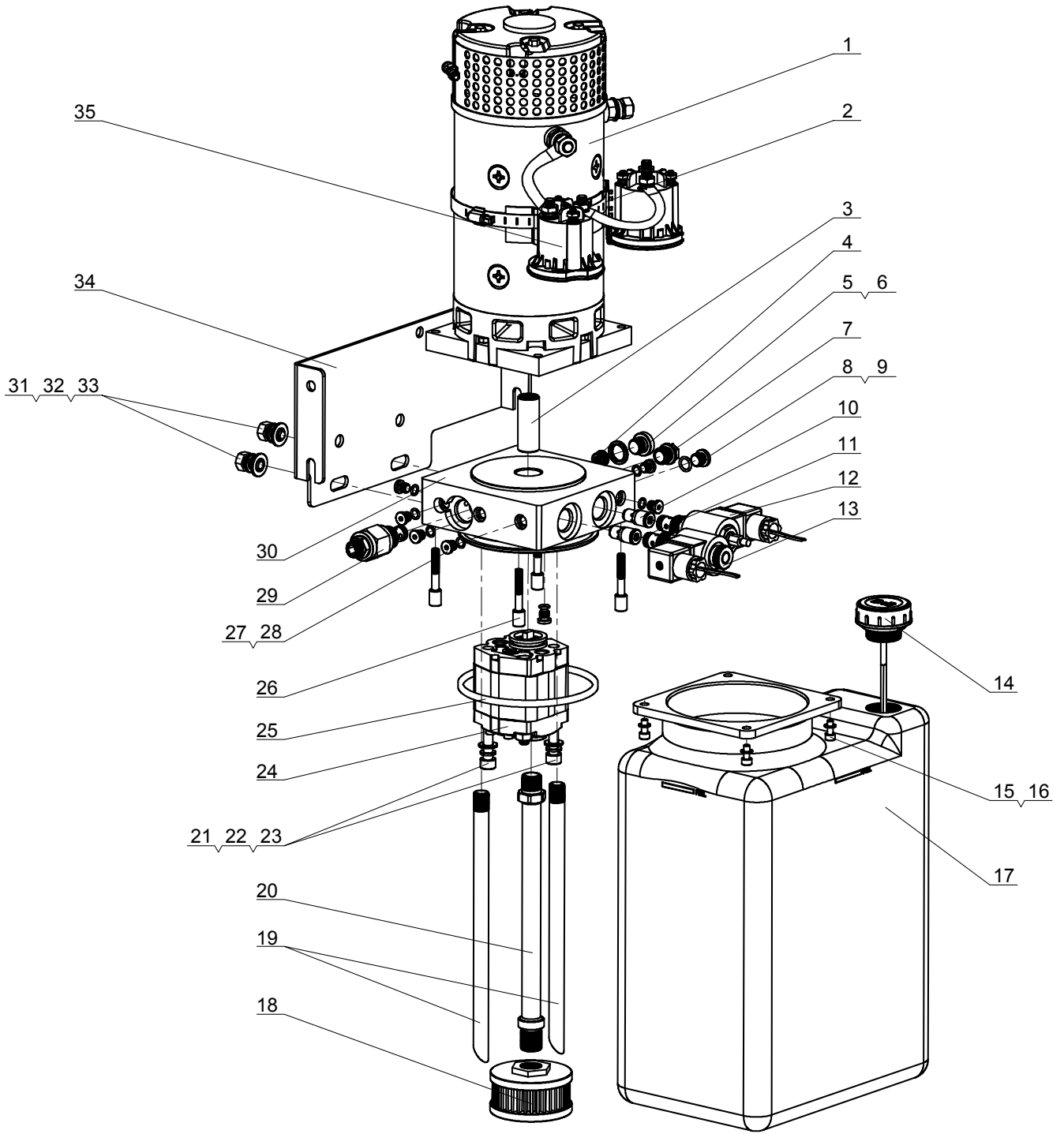
11	Caster Clevis Weldment	M120052Y
12	Handle Weldment	M120062Y
13	Caster Retainer Plate	M120075Y
14	Spring Cap Weldment	M120077Y
15	Brake Weldment	M120080Y
16	Link Arm	M120084Y
17	Caster Spring	M130010Y
18	Caster Wheel	M130011Y
19	UHMW Bearing Sheet	M130019Y
20	Brake Spring	M130020Y
21	Center Handle Bearing	M130021Y
22	Linkage Bearing	M130022Y
23	Outer Handle Bearing	M130026Y
24	Flange Bearing	M130027Y



Item	Description	Part No.
1	RH Fork Weldment	M120668Y
2	LH Fork Weldment	M120667Y
3	Roller Support Weldment	D13100Y
4	M12 Lock Washer	41595
5	M12 x 1.75 x 25mm Lg. HHCS Grade 8.8, PLTD	B11-12X25
6	Swivel Nut Elbow #6	NA
7	9/16" Internal Tooth Lock Washer, PLTD	NA
8	Bulkhead Union Elbow #6	T140132
9	Cylinder Hydraulic Tube	M130227Y
10	Adapter	FJ7352-3
11	Velocity Fuse	M130016
12	Hydraulic Cylinder	M130001Y
	Cylinder Seal Kit	M130130
13	Roller	D12201Y
14	Slider	FC5905-4Y
15	Leg Wheel Axle	D10001Y
16	Leg Wheel Assembly	D10010Y
17	Shaft Ring	B60-30
18	Carriage Assembly	D12000Y-2
19	Column Thrust Bearing	D15001Y



# PDL3576E Power Unit

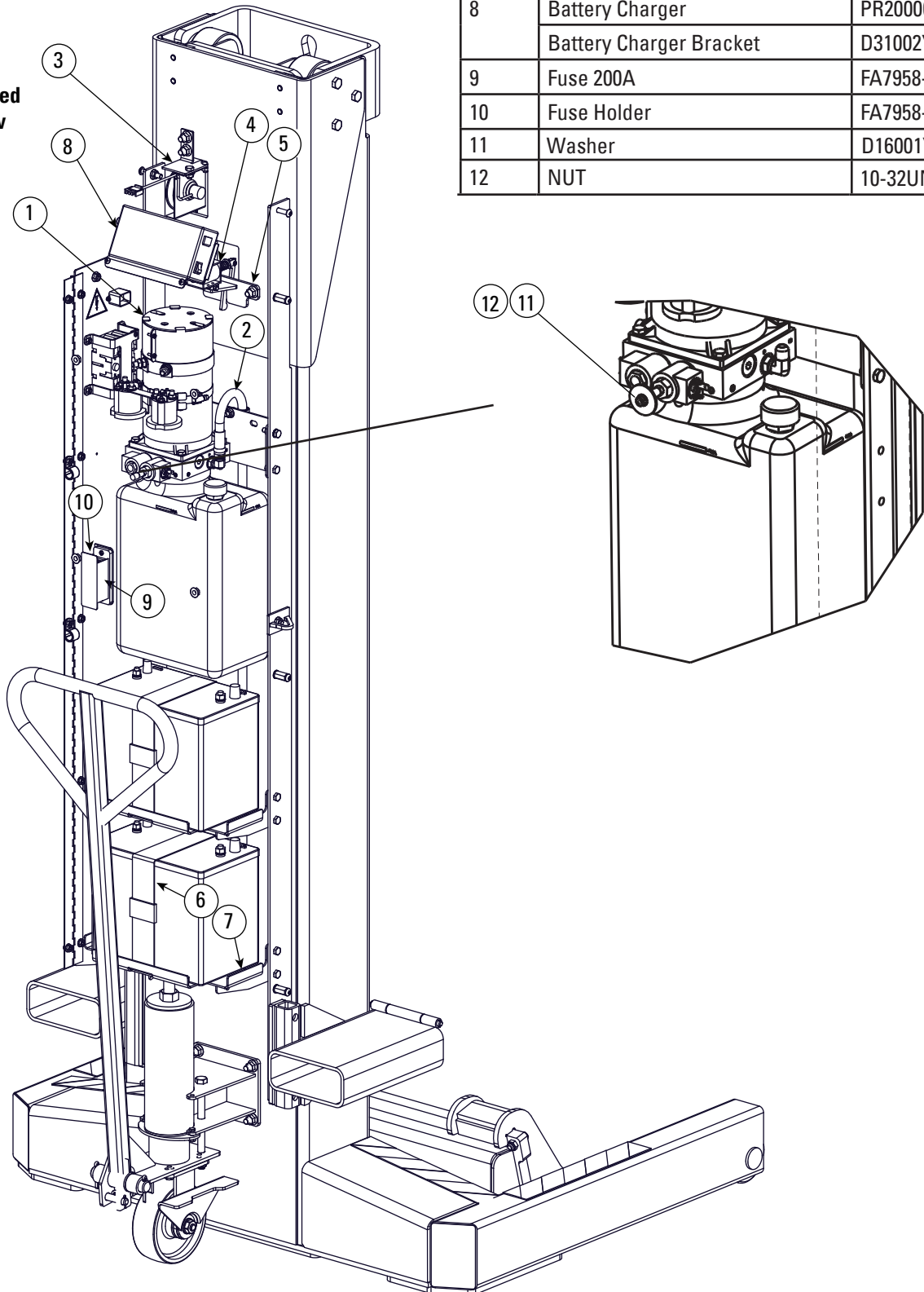


# PDL3576E Power Unit

Item	Description	Part No.
1	DC Motor 24VDC 3.0KW	DM12-2BXV-3BA1R
2	Hose Clamps	d120/JB/T 8870
3	Coupling	YBZ-F2.1D4H1/1-03
4	Check Valve	ILCV2000-G14
5	Plug	YBZ-PG1/4" A
6	Bonded Washer	14A/JB982-77
7	Plastic Plug	POP-SAE6
8	Plug	YBZ1-PG04A
9	O-ring	9x1.8/GB/T 3452
10	Flow Control Valve	BL-I2.5
11	Flow Control Valve	BL-I1.5
12	Solenoid Valve	LSV-08-2NCP-J-2H
13	Solenoid Valve	LSV-08-2NCP-2H
14	Breather	YBZ-BT-M30x2
15	Hex Socket Cap Screw	M5x18/GB/T 70.1
16	Washer	5/GB/T 95
17	Plastic Tank	SLYX-10L-L-R
18	Suction Filter	YBZ-E2D31/1-10
19	Return Tube	YBZ-G3J4H43/1-03
20	Suction Tube	YBZ-F2.11/1-03
21	Hex Socket Cap Screw	M8x80/GB/T 70.1
22	Spring Washer	8/GB/T 859
23	Washer	8/GB/T 95
24	Gear Pump	CBKA-F2.7F
25	O-ring	109x5.3/GB/T 3452.1
26	Hex Socket Cap Screw	NLJLD-M6x50
27	Plug	YBZ1-PG02A
28	O-ring	6.5x1.5/EKM
29	System Relief Valve	LPSRV2-08-50
30	Endhead	LBZ-T202KK-1
31	Outer Hexagonal Cap Screw	3/8" - 16UNCx15
32	Spring Washer	10/GB/T 859
33	Washer	10/GB/T 95
34	Mouting Bracket	YBZ5-F2.7D2B202/XVQIT1-01
35	DC Contactor	684-24C1-212-17

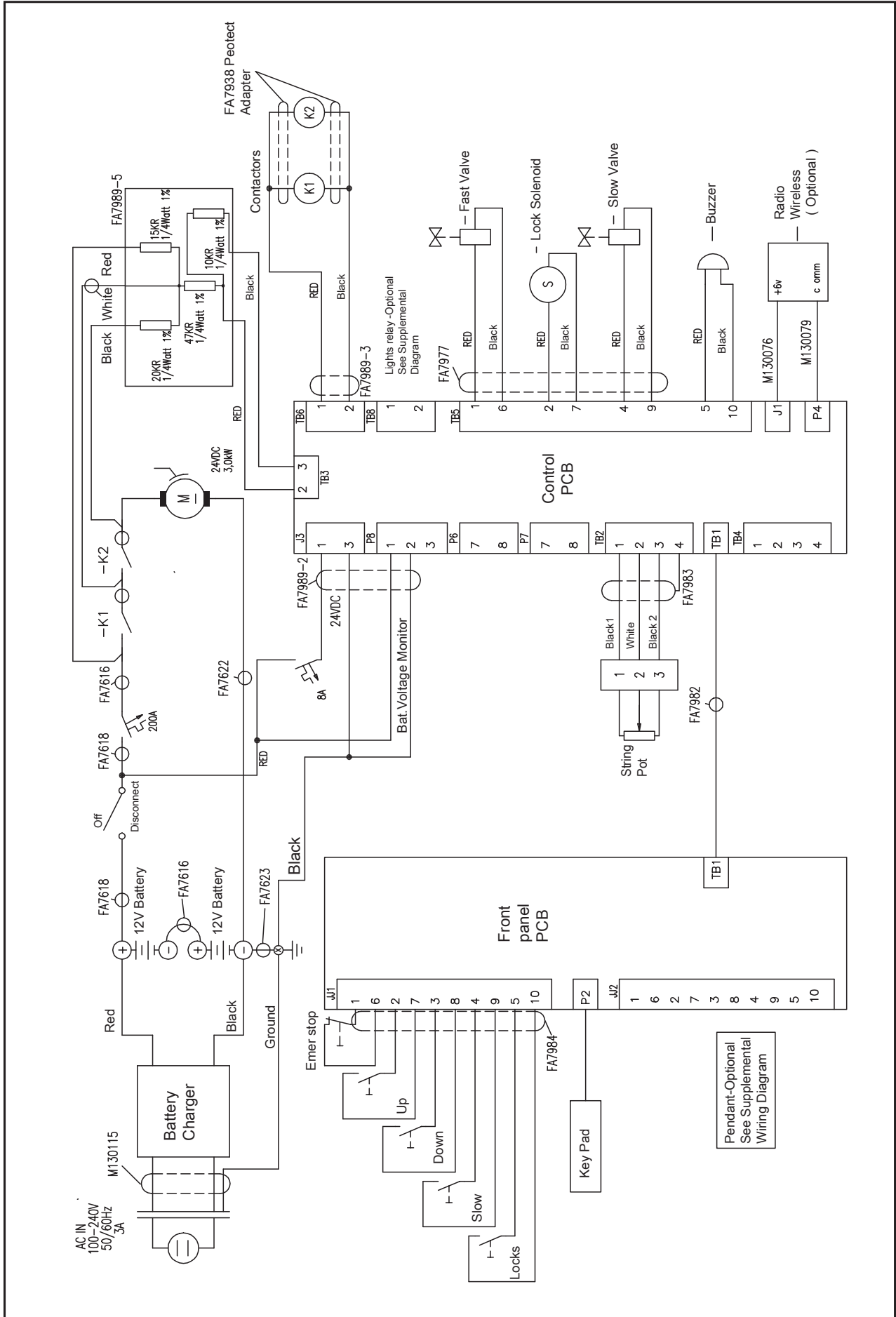
Item	Description	Part No.
1	24V DC Power Unit	PDL3576E
2	Power Unit Hose	M130226Y
3	String Pot Assembly	M110187Y
4	Solenoid	M130017
5	Latch Assembly Bracket	M110008Y
6	Battery Strap	M130032
7	Battery Tray	M120167Y
8	Battery Charger	PR2000642Y
	Battery Charger Bracket	D31002Y
9	Fuse 200A	FA7958-6
10	Fuse Holder	FA7958-50
11	Washer	D16001Y
12	NUT	10-32UNF

Upper Cover Removed  
For Clarity Of View

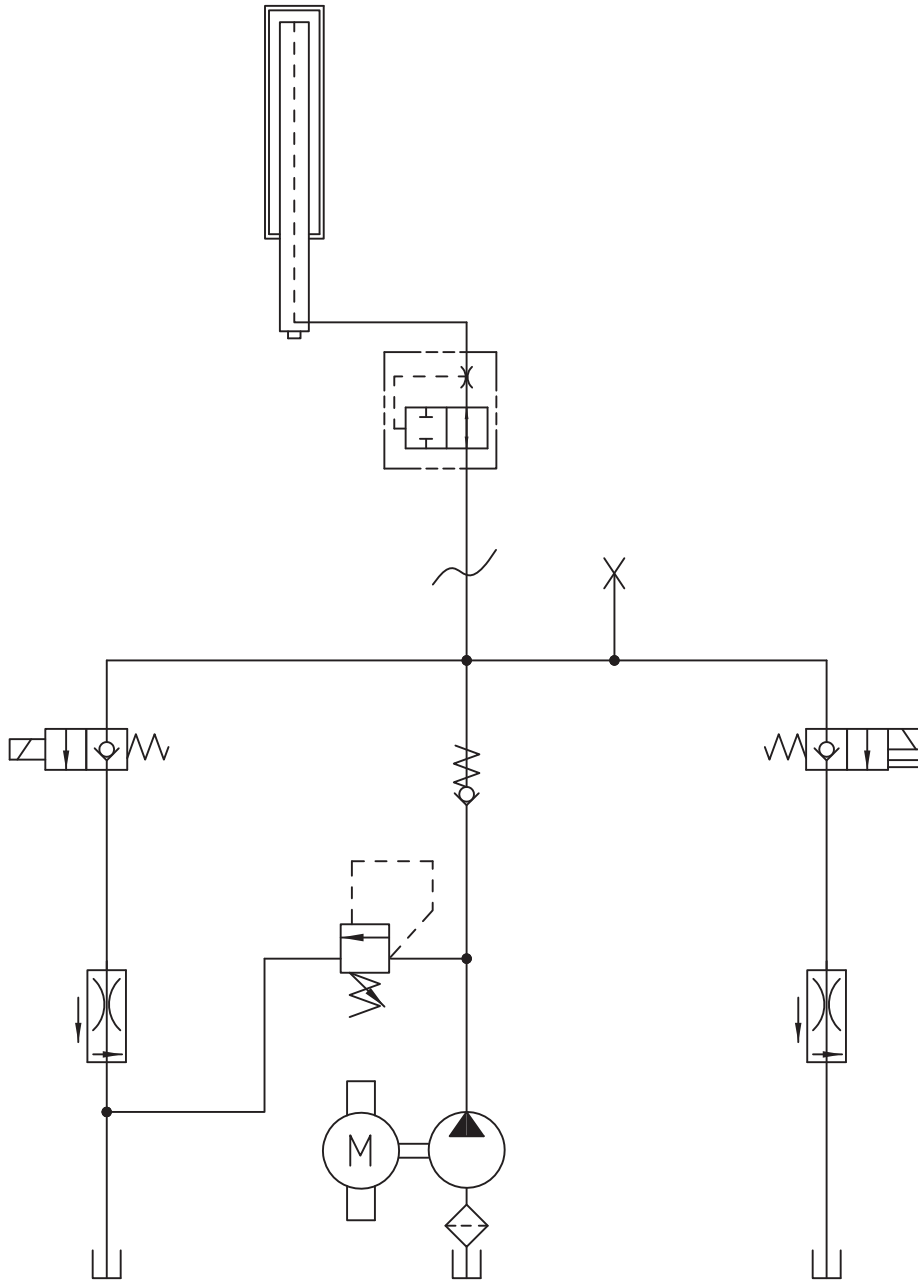




# COLUMN WIRING DIAGRAM



# HYDRAULIC SCHEMATIC



# NOTES

**Installer:** Please return this booklet to literature package, and give to lift owner/operator.

***Thank You***

***Trained Operators and Regular Maintenance Ensures Satisfactory Performance of Your Rotary Lift.***

***Contact Your Nearest Authorized Rotary Parts Distributor for Genuine Rotary Replacement Parts. See Literature Package for Parts Breakdown.***

**Rotary World Headquarters**  
2700 Lanier Drive  
Madison, IN 47250, USA  
[www.rotarylif.com](http://www.rotarylif.com)



**Rotary Lift Consolidated (Haimen) Co., Ltd**  
No.1388, East Xiushan Road, Haimen,  
Jiangsu Province, China, 226100  
[www.vsg-asia.com](http://www.vsg-asia.com)  
P:86-513-81261262

© **Vehicle Service Group<sup>SM</sup>**  
Printed in China, All Rights Reserved.  
Unless otherwise indicated, ROTARY,  
and all other trademarks are property  
of Dover Corporation and its affiliates.

