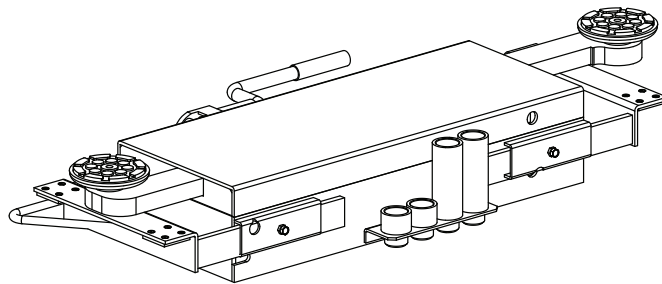
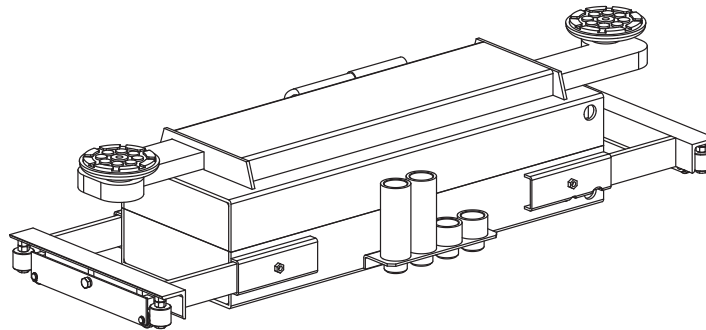




**RJ35 PROJACK 3500**  
**3500 lb. Rolling Jack**  
**RJ45 PROJACK 4500**  
**4500 lb. Rolling Jack**



RJ35



RJ45

**Table of Contents**

Installation Instructions ..... 3  
 Specifications ..... 4  
 Safety Instructions ..... 6  
 Operating Instructions ..... 6  
 Maintenance Instructions ..... 6  
 Trouble Shooting ..... 7  
 Parts Breakdown ..... 8

**I  
N  
S  
T  
A  
L  
L  
A  
T  
I  
O  
N  
-  
S  
A  
F  
E  
T  
Y  
-  
O  
P  
E  
R  
A  
T  
I  
O  
N  
-  
M  
A  
I  
N  
T  
E  
N  
A  
N  
C  
E**

### **The Owner/Employer:**

- Shall ensure that lift operators are qualified and that they are trained in the safe use and operation of the lift using the manufacturer's operating instructions; *ALI/SM01-1, ALI Lifting it Right safety manual; ALI/ST-90 ALI Safety Tips card; ANSI/ALI ALOIM-2008, American National Standard for Automotive Lifts-Safety Requirements for Operation, Inspection and Maintenance; ALI/WL Series, ALI Uniform Warning Label Decals/Placards; and in the case of frame engaging lifts, ALI/LP-GUIDE, Vehicle Lifting Points/Quick Reference Guide for Frame Engaging Lifts.*
- Shall establish procedures to periodically inspect the lift in accordance with the lift manufacturer's instructions or ANSI/ALI ALOIM-2008, *American National Standard for Automotive Lifts-Safety Requirements for Operation, Inspection and Maintenance;* and The Employer Shall ensure that lift inspectors are qualified and that they are adequately trained in the inspection of the lift.
- Shall establish procedures to periodically maintain the lift in accordance with the lift manufacturer's instructions or ANSI/ALI ALOIM-2008, *American National Standard for Automotive Lifts-Safety Requirements for Operation, Inspection and Maintenance;* and The Employer Shall ensure that lift maintenance personnel are qualified and that they are adequately trained in the maintenance of the lift.
- Shall maintain the periodic inspection and maintenance records recommended by the manufacturer or ANSI/ALI ALOIM-2008, *American National Standard for Automotive Lifts-Safety Requirements for Operation, Inspection and Maintenance.*
- Shall display the lift manufacturer's operating instructions; *ALI/SM 93-1, ALI Lifting it Right safety manual; ALI/ST-90 ALI Safety Tips card; ANSI/ALI ALOIM-2008, American National Standard for Automotive Lifts-Safety Requirements for Operation, Inspection and Maintenance;* and in the case of frame engaging lifts, *ALI/LP-GUIDE, Vehicle Lifting Points/Quick Reference Guide for Frame Engaging Lifts;* in a conspicuous location in the lift area convenient to the operator.
- Shall provide necessary lockout/tagout means for energy sources per ANSI Z244.1-1982 (R1993), *Safety Requirements for the Lockout/Tagout of Energy Sources,* before beginning any lift repairs.
- Shall not modify the lift in any manner without the prior written consent of the manufacturer.

# INSTALLATION INSTRUCTIONS

1. After filling the pump with hydraulic oil, set the sliding jack on the floor between lift runways with the Pro-Park 7 in the full down position.  
\* Pump may be supplied with hydraulic oil pre-filled.
2. Using the 3mm allen wrench, loosen the four (4) set-screws on the adjustable arms of the Pro-Jack.
3. Pull the two (2) adjustable arms out fully until the wear block sits on top of the runways.

**CAUTION** Never try to rest on the lower lip of the runway. This is not a weight bearing surface.

4. Using the 3mm allen wrench, tighten the four set-screws. Make sure the sliding jack will slide freely forward and back on the runways.

**CAUTION** **DO NOT** grease the wear block, lift, or jack. If the sliding jack does not slide freely when mounted on the runways without weight on it, review these assembly instructions and repeat the assembly. Lubrication could produce a hazardous lifting condition.

5. Place jack on runway tracks at front and rear with pump, facing ends of runways. Adjust width of rolling jack to fit runway track. Make sure wheels are on the tracks. Center rolling jack between runways.

**DO NOT OVERLOAD JACK.**

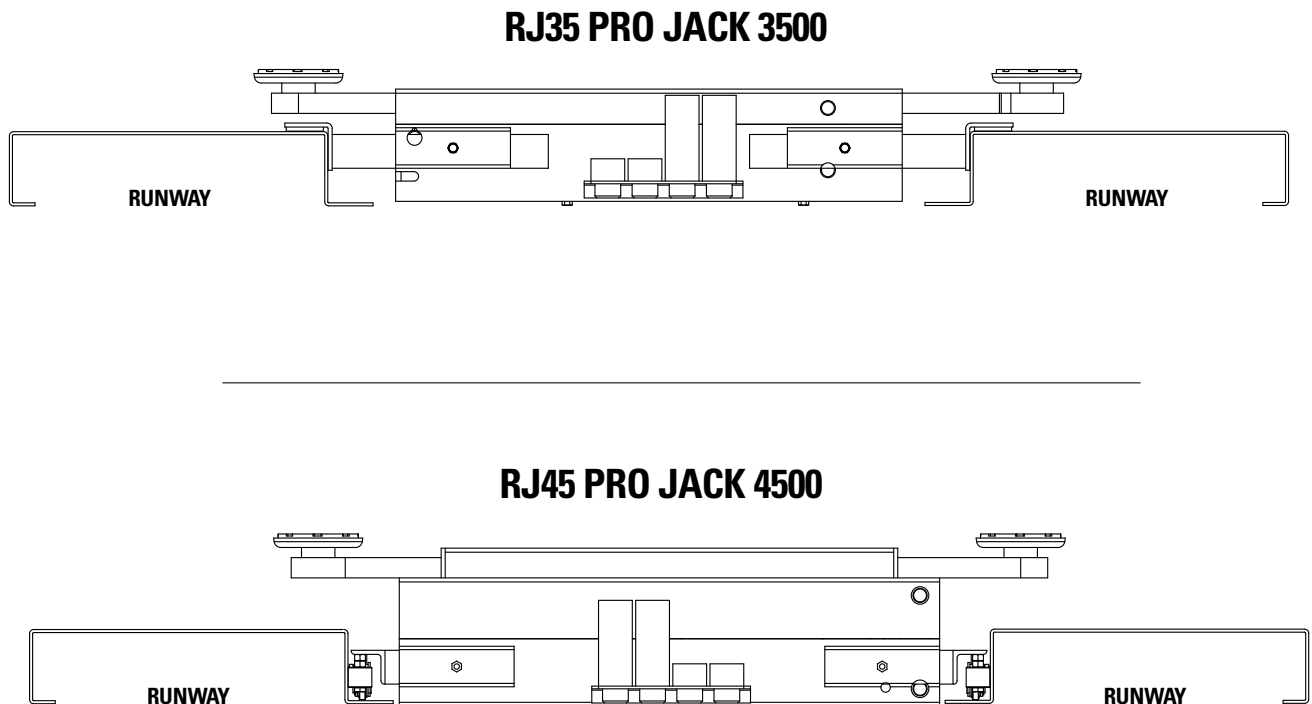


Fig. 1

## RJ35 Pro Jack 3500 General Description

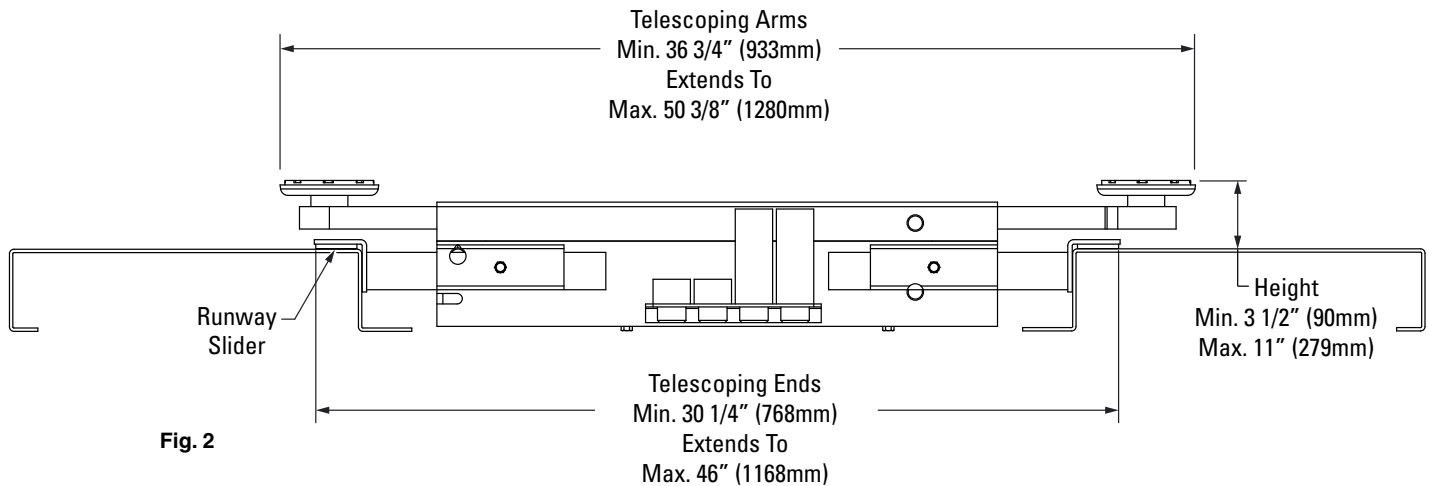
The RJ35 rolling jack assembly shall be a hand pump operated, scissors style rolling jack assembly capable of lifting the wheels free of the runways for brake, suspension and tire service.

### Description of installed equipment:

- A. Lifting capacity of the rolling jack shall be 3500 lbs. (1588 kg).
- B. The runway sliders shall be adjustable for an inside runway width of 30 1/4" (768 mm) minimum to a 46" (1168 mm) maximum Fig. 2.
- C. The rolling jack shall be equipped with two (2) different sized extended pads 1 1/4" and 5".
- D. The jack shall be equipped with a locking latch assembly that will lock at full-rise and that is released by actuating the lock handle.

**\*Specifications are subject to change without notice.**

## RJ35 PRO JACK 3500



## RJ45 Pro Jack 4500 General Description

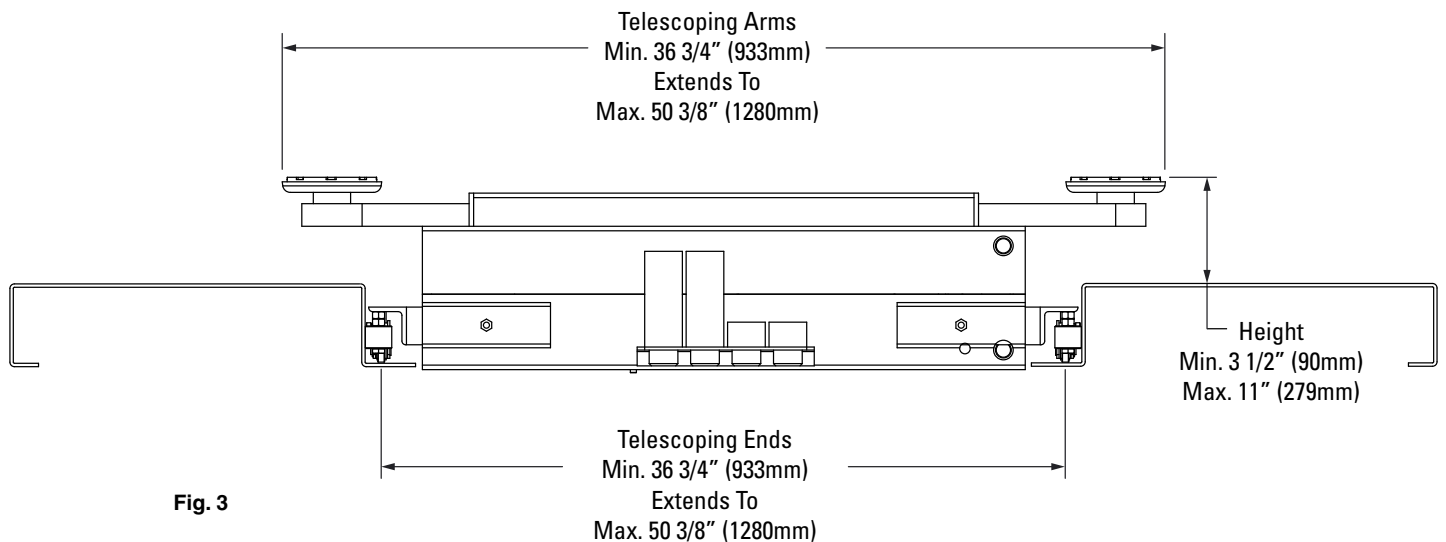
The RJ45 rolling jack assembly shall be a hand pump operated, scissors style rolling jack assembly capable of lifting the wheels free of the runways for brake, suspension and tire service.

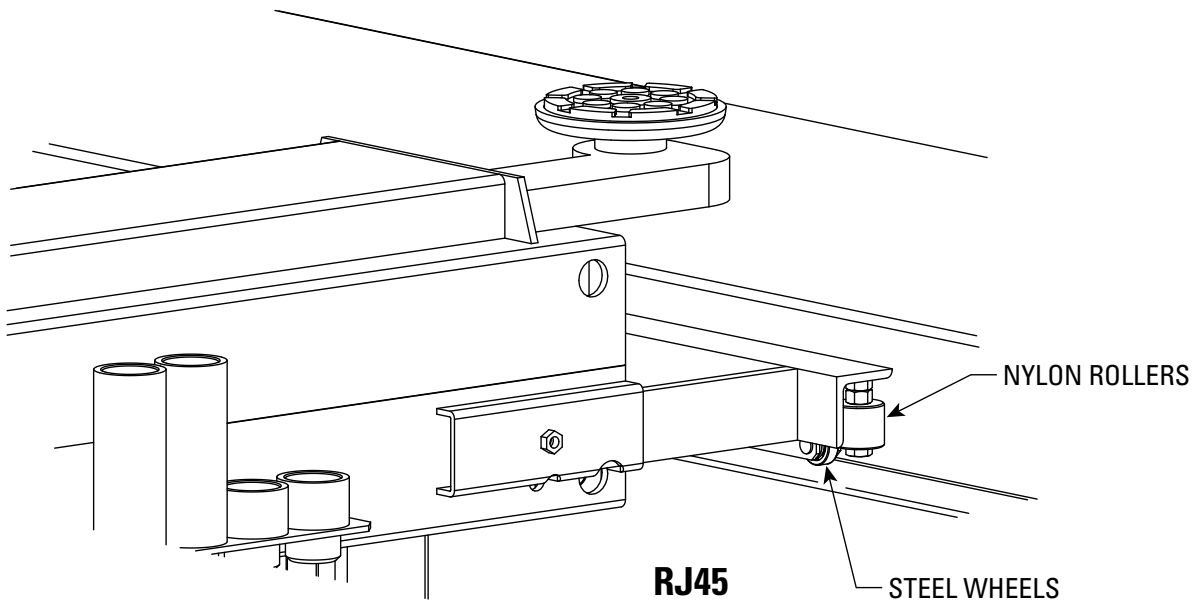
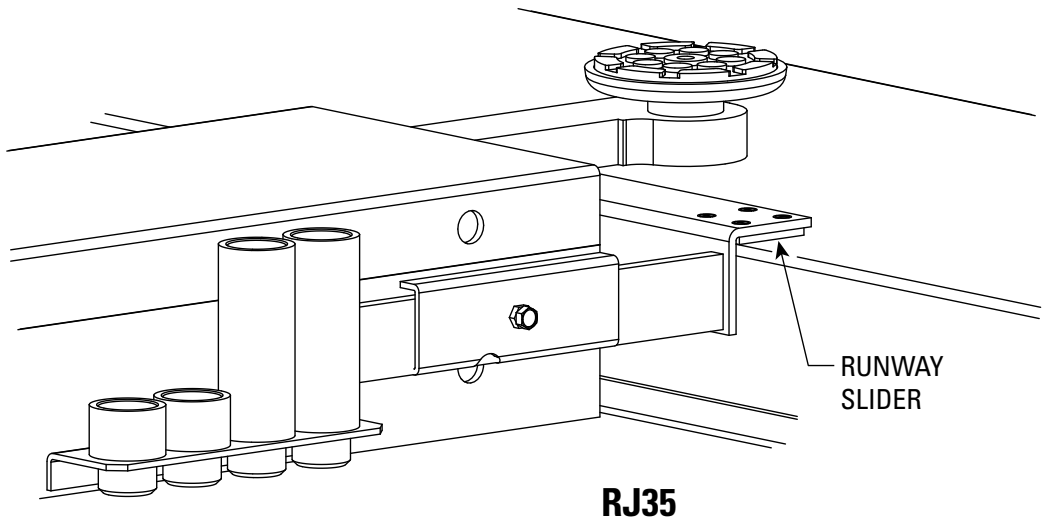
### Description of installed equipment:

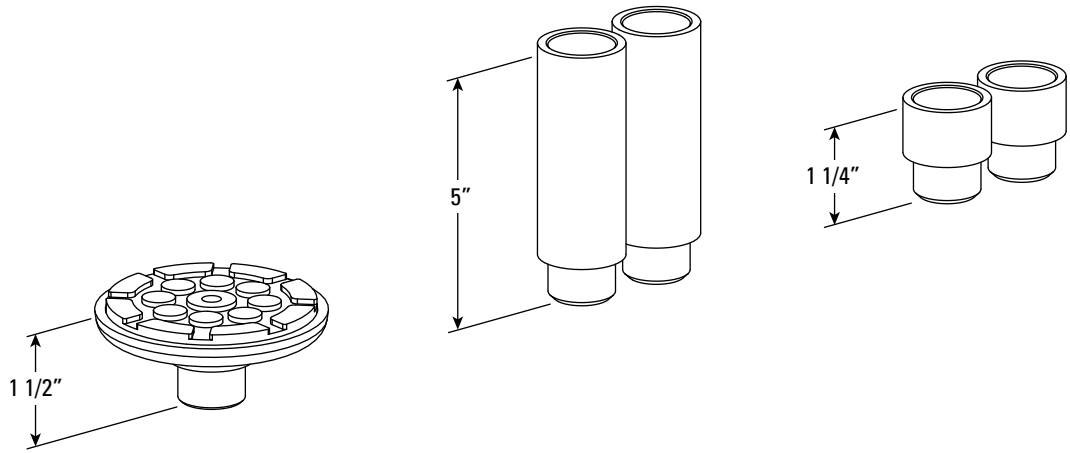
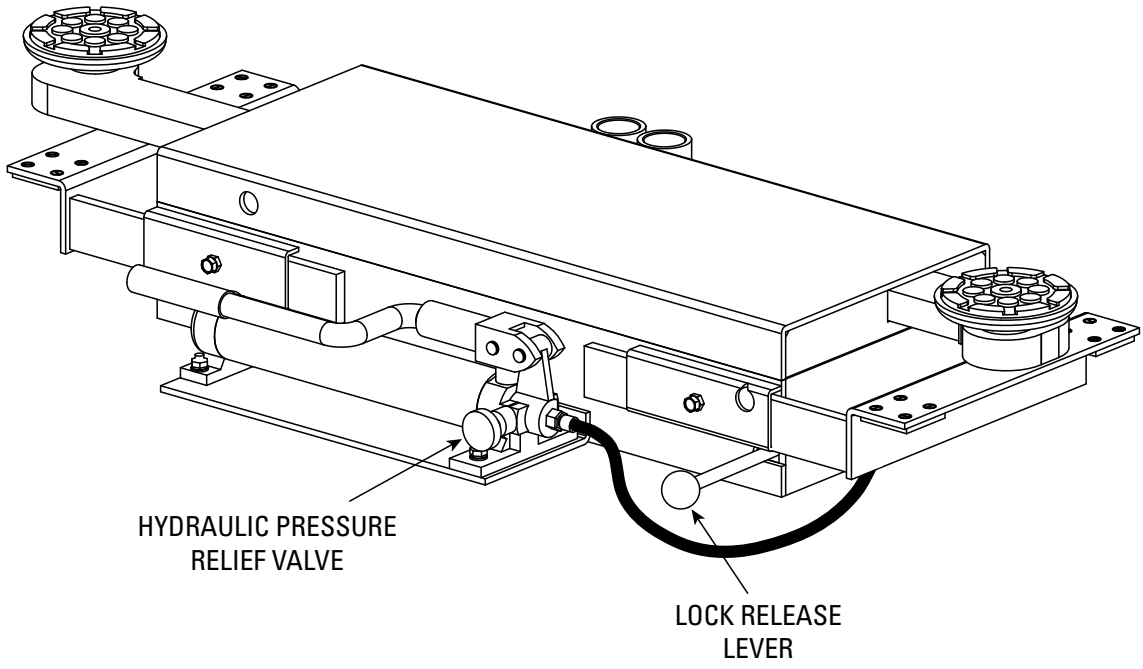
- A. Lifting capacity of the rolling jack shall be 4500 lbs. (2041 kg).
- B. The roller wheels shall be adjustable for an inside runway width of 36 3/4" (933 mm) minimum to a 50 3/8" (1280 mm) maximum Fig. 3.
- E. The rolling jack shall be equipped with two (2) different sized rubber pads 1 1/4" and 5".
- F. The jack shall be equipped with a locking latch assembly that will lock at full-rise and that is released by actuating the lock handle.
- H. The rolling jack shall be moveable on four (4) heavy duty steel wheels. Actual vehicle load to be transferred to jack end section load bars engaging the roller track assembly.

**\*Specifications are subject to change without notice.**

## RJ45 PRO JACK 4500







## SAFETY INSTRUCTIONS

- Never allow unauthorized or untrained persons to operate rolling jack.
  - Thoroughly train all employees in the use and care of rolling jack.
  - Never overload rolling jack. Capacity of rolling jack is stated on the nameplate. Capacity should not be exceeded.
  - Observe and avoid any pinch point areas of the linkage mechanism.
- 

## OPERATING INSTRUCTIONS

**⚠ WARNING** To avoid personal injury and/or property damage, permit only trained personnel to operate jack. After reviewing these instructions, get familiar with jack controls by running the jack through a few cycles before loading vehicle on jack.

Observe and avoid any pinch point areas of the linkage mechanism.

1. Before loading a vehicle onto lift, ensure jack(s) are fully lowered. Make sure the adapters are in their most inbound and lowest position. Also ensure rear jack is toward the center of the lift.

**⚠ CAUTION** Move rear jack toward center of runways of maximum vehicle clearance when loading and unloading vehicles.

**⚠ CAUTION** Always fully lower jack(s) to prevent damage to the vehicle or lift.

2. After vehicle has been loaded, chock tires on the opposite side in which the rolling jack is to be used. If two rolling jacks are to be used, chock the tires on the opposite side of the rolling jack to be raised first.

**⚠ WARNING** Engage runway locks before raising vehicle on jacks! **DO NOT** operate lift while jacks are engaged with a vehicle!

3. Place jack under vehicle at manufacturer's recommended pick-up points. Pull out the arms to the proper pick-up points. Take up clearance with rubber blocks.

**⚠ CAUTION** Allow 12" minimum clearance between vehicle and nearest overhead obstruction before raising vehicle above runways. Failure to comply could damage vehicle and/or cause personal injury.

4. **To Raise Rolling Jack:** Depress the pump lever repeatedly until the jack is raised to the desired lock position.

5. **To Lower Rolling Jack:** Rotate the release valve knob slowly until the jack lowers completely.

**⚠ CAUTION** Always fully lower jack to prevent damage to the vehicle or lift.

Note: The Latch release handle is gravity return to "reset" and the lowering valve handle is spring return to "close" when released. Both must be held open during the lowering cycle. **DO NOT** override these "deadman" features.

4. Be sure the jack is fully lowered, the adapters are in their lowest position, and bridge(s) are pushed towards front of lift before driving the vehicle off the lift.



# MAINTENANCE INSTRUCTIONS

**⚠ WARNING** If you are not completely familiar with automotive lift maintenance procedures STOP: Contact factory for instructions.

**TO AVOID PERSONAL INJURY**, permit only qualified personnel to perform maintenance on this equipment.

- Daily: Inspect rolling jack adapters for damage or excessive wear. Replace as required with original parts.
- Daily: Inspect hydraulic system for leaks.
- Daily: Inspect for loose bolts, broken/damaged components.
- Daily: Inspect linkage curtain guard for damage, wear and tear. Replace as required with original parts.
- Monthly: Inspect the roller assemblies.
- Semi-Annually: Check fluid level in hydraulic reservoir.

## Fluid Level Checking Procedure:

1. Completely lower rolling jack.
2. Wipe reservoir clean to prevent contamination of fluid.
3. Remove fill plug and check fluid level. Fill as required to bottom of fill hole with AW32 hydraulic fluid. Take care to prevent contamination during filling operation.
4. Reinstall plug hand tight only.

Note: Repair/Replace as required with original equipment parts.

## TROUBLE SHOOTING

Trouble	Cause	Remedy
Rolling Jack will not raise after contacting load.	<ol style="list-style-type: none"> <li>1. Lift loaded beyond capacity.</li> <li>2. External fluid leak at pump, hose or cylinder.</li> <li>3. Internal leakage.</li> <li>4. Release mechanism damaged or parts missing.</li> <li>5. Pump low on fluid.</li> <li>6. Pump malfunctioning.</li> </ol>	<ol style="list-style-type: none"> <li>1. Use lift only to rated capacity.</li> <li>2. Repair leak, refill reservoir.*</li> <li>3. Have pump serviced by an authorized service center.</li> <li>4. Replace damaged or missing parts.</li> <li>5. Lower lift and check fluid level. Fill with AW32 hydraulic fluid. Locate and correct leak.*</li> <li>6. Have pump serviced by an authorized service center.</li> </ol>
<hr/>		
Rolling Jack will not raise to full height.	<ol style="list-style-type: none"> <li>1. Pump low on fluid.</li> </ol>	<ol style="list-style-type: none"> <li>1. Lower lift and check fluid level. Fill with AW32 hydraulic fluid. Locate and correct leak.*</li> </ol>
<hr/>		
Lift drifts down - will not hold.	<ol style="list-style-type: none"> <li>1. Release mechanism damaged or parts missing.</li> <li>2. External leakage.</li> <li>3. Internal leakage.</li> </ol>	<ol style="list-style-type: none"> <li>1. Replace damaged or missing parts.</li> <li>2. Locate leak and repair. Refill reservoir.*</li> <li>3. Have pump serviced by an authorized service center.</li> </ol>



\* - Do not overfill reservoir. Lift must be completely lowered prior to adding fluid.

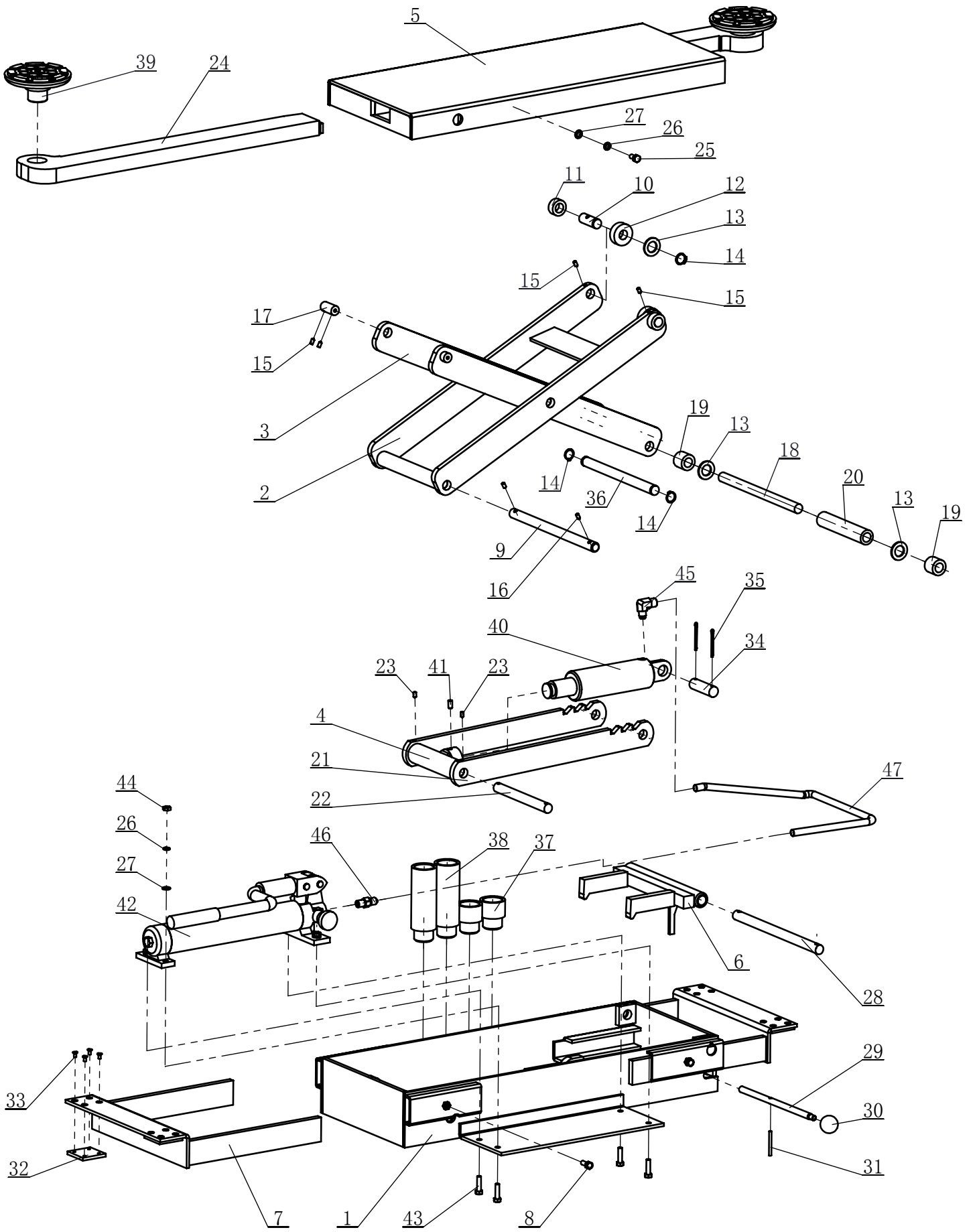
## TROUBLE SHOOTING continued

Trouble	Cause	Remedy
Lift lowers slow or not at all.	<ol style="list-style-type: none"><li data-bbox="618 205 1073 279">1. Release mechanism damaged or parts missing.</li><li data-bbox="618 279 1073 352">2. Return flow of fluid restricted or blocked.</li></ol>	<ol style="list-style-type: none"><li data-bbox="1105 205 1552 279">1. Replace damaged or missing parts.</li><li data-bbox="1105 279 1552 585">2. Eliminate blockage. <b>⚠WARNING</b> If rolling jack is in the raised position, be sure to activate the mechanical locking device prior to attempting to service the unit. Failure to do so may cause lift to drop out of control.</li></ol>

## RJ35 Parts Breakdown

1	RJ35-1000	Bottom Tray	1	
2	RJ35-2100	Outer Scissor	1	
3	RJ35-3100	Inner Scissor	1	
4	RJ35-4002	Shaft Tray	1	
5	RJ35-5100	Top Cover	1	
6	RJ35-6100	Latch,Weldment	1	
7	RJ35-7100	Roller Structure	2	
8	B10-8 × 20	M8×20 Bolt	4	
9	RJ35-2001	Long Shaft	1	
10	RJ35-2002	Roller Shaft	2	
11	RJ35-2003	Rollers A	2	
12	RJ35-2004	Rollers B	2	
13	B41-20	Ø20 Flat Washer	4	
14	B60-19	Ø19 Snap Ring	4	
15	B22-6 × 12	M6×12 Screw	8	
16	B22-6 × 8	M6×8 Screw	2	
17	RJ35-3001	Short Shaft	2	
18	RJ35-3002	Roller Shaft	1	
19	RJ35-3003	Rollers	2	
20	RJ35-3004	Spacer	1	
21	RJ35-4001	Pushing Weldment	2	
22	RJ35-4003	Shaft	1	
23	B22-6 × 16	M6×16 Screw	2	
24	RJ35-5200	Arm	2	
25	B10-8 × 16	M8×16 Screw	2	
26	B40-8	Ø8 Lock Washer	6	
27	B41-8	Ø8 Flat Washer	6	
28	RJ35-6001	Shaft	1	
29	RJ35-6002	Shaft	1	
30	B84-35	Ø35 × M10 Plastic Ball	1	
31	B51-5 × 50	Ø5 × 50 Lock Pin	1	
32	RJ35-7001	Nylon Pad	4	
33	B29-5 × 10	M5 × 10 Screw	16	
34	RJ35-0001	Shaft,Cylinder	1	
35	B52-4 × 45	Ø4×45 Cotter Pin	2	
36	RJ35-0002	Shaft,Scissor	1	
37	30400-6014A	Adapter A	2	
38	30400-6015A	Adapter A	2	
39	30400-6005-1	Swivel Lifting Pads	2	
40	YG20-9100	Cylinder	1	
41	B21-8 × 16	M8 × 16 Screw	1	
42	SP03-9100	Hand Pump	1	
43	B10-8 × 30	M8 × 30 Bolt	4	
44	B30-8	M8 Nut	4	
45	H4D-Y004 (SW003)	Fitting,Elbow	1	
46	SP03-9111	Fitting	1	
47	1WB-15	Hydraulic Hose	1	

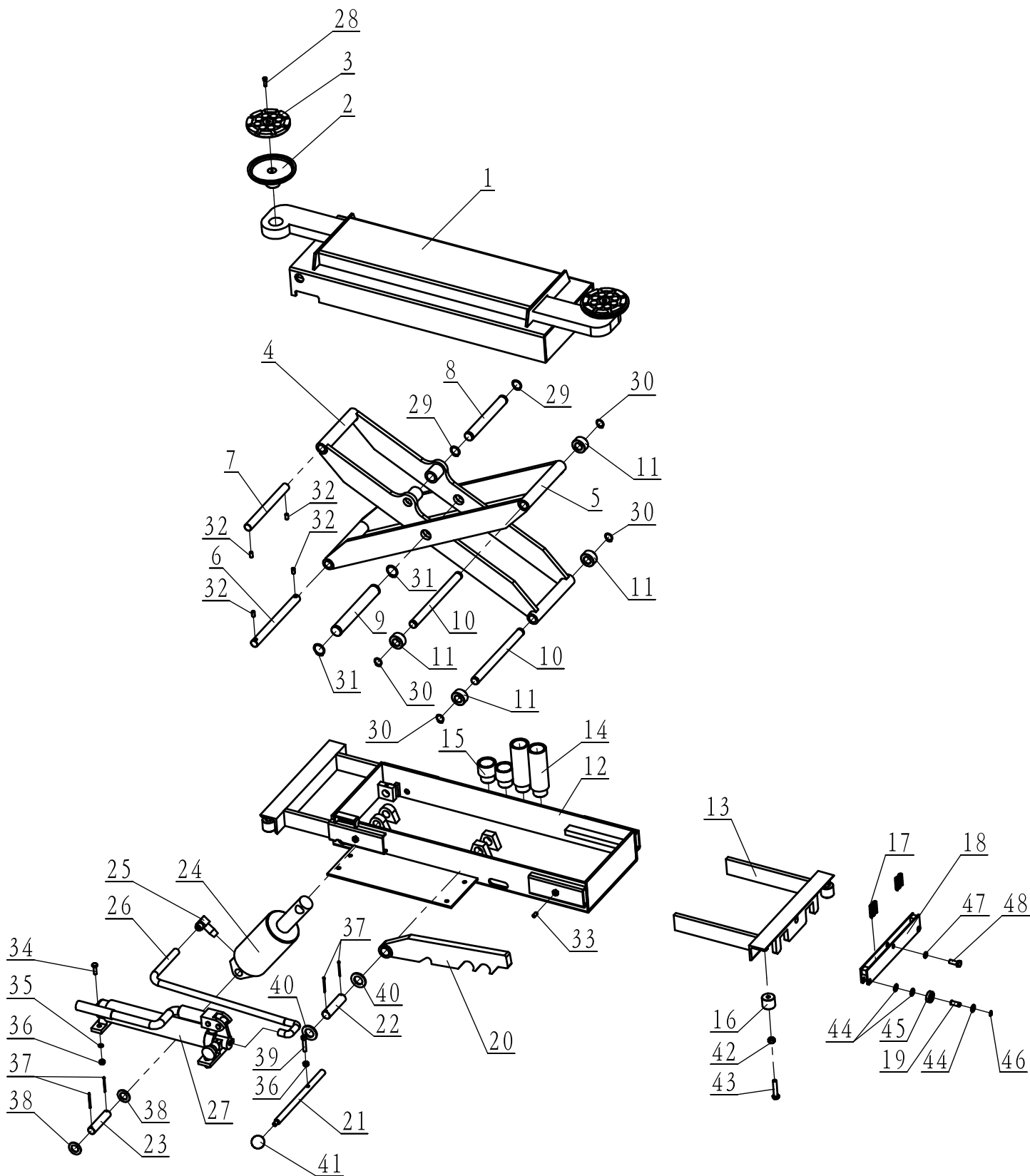
# RJ35 Parts Breakdown



## RJ45 Parts Breakdown

1	NH4D-7100	Top Cover	1
2	30400-6005-2	Swivel Lifting Pads	2
3	PV-6003	Rubber Pad	2
4	NH4D-7320	Inner Scissor	1
5	NH4D-7310	Outer Scissor	1
6	NH4D-7301	Shaft	1
7	NH4D-7302	Shaft	1
8	NH4D-7303	Shaft	1
9	NH4D-7304	Shaft	1
10	NH4D-7305	Shaft	2
11	NH4D-7306	Wheel	4
12	NH4D-7200M	Bottom Cover	1
13	NH4D-7510	Roller Structure	2
14	30400-6015A	Adapter A	2
15	30400-6014A	Adapter	2
16	NH4D-7501	Wheel	4
17	H4P-9401	Spring	8
18	NH4D-7520	Roller Weldment	2
19	NH4D-7502	Pin	4
20	NH4D-7410	Lock Weldment	1
21	NH4D-7402	Shaft	1
22	NH4D-7401	Shaft	1
23	NH4D-7001	Pin,Cylinder Bottom	1
24	YG29-9100	Cylinder	1
25	NH4D-7002	Fitting,Elbow	1
26	RJ45M-9801-1	Host	1
27	SP03-9100G	Manual Pump	1
28	B20-6 × 20	Bolt M6 x 20	2
29	B60-25	C-clip Ø25	2
30	B60-20	C-clip Ø20	4
31	B60-30	C-clip Ø30	2
32	B22-8 × 16	Bolt M8 x 16	4
33	B21-8 × 16	Bolt M8 x 16	4
34	B10-8 × 25	Bolt M8 x 25	4
35	B40-8	Lock Washer Ø8	4
36	B30-8	Nut M8	5
37	B52-3 × 40	Pin Ø3 x 40	4
38	B41-20	Flat Washer Ø20	2
39	B20-8 × 40	Bolt M8 x 40	1
40	B41-24	Flat Washer Ø24	2
41	B84-35	Wooden Ball Ø35 x M10	1
42	B30-10	Nut M10	4
43	B10-10 × 50	Bolt M10 x 50	4
44	B41-10	Flat Washer Ø10	12
45	B70-6200	Bearing 6200	4
46	B60-10	C-clip Ø10	4
47	B40-10	Lock Washer Ø10	2
48	B10-10 × 25	Bolt M10 x 25	2

# RJ45 Parts Breakdown



**Installer:** Please return this booklet to literature package, and give to lift owner/operator.

***Thank You***

**Trained Operators and Regular Maintenance Ensures Satisfactory Performance of Your Rotary Lift.**

**Contact Your Nearest Authorized Rotary Parts Distributor for Genuine Rotary Replacement Parts. See Literature Package for Parts Breakdown.**