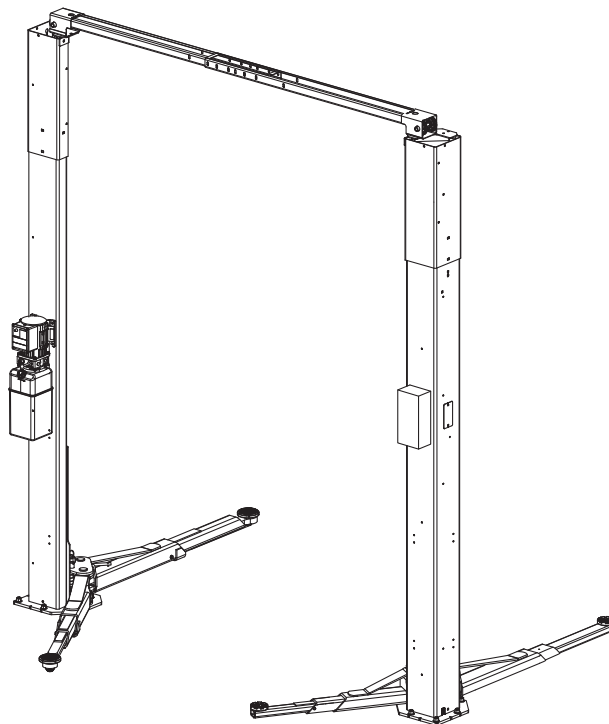




**AT07**  
**100 Series**  
**Two Post Surface Mounted Lifts**

Capacity:  
 7000 lbs. (3181 kg)  
 1750 lbs. (795.25 kg) per arm



**P  
A  
R  
T  
S  
  
B  
R  
E  
A  
K  
D  
O  
W  
N**

**IMPORTANT:** When ordering parts or requesting service always give exact model and power unit serial number. Model number is shown on nameplate attached to power unit column. Power unit serial number is located on side of power unit.

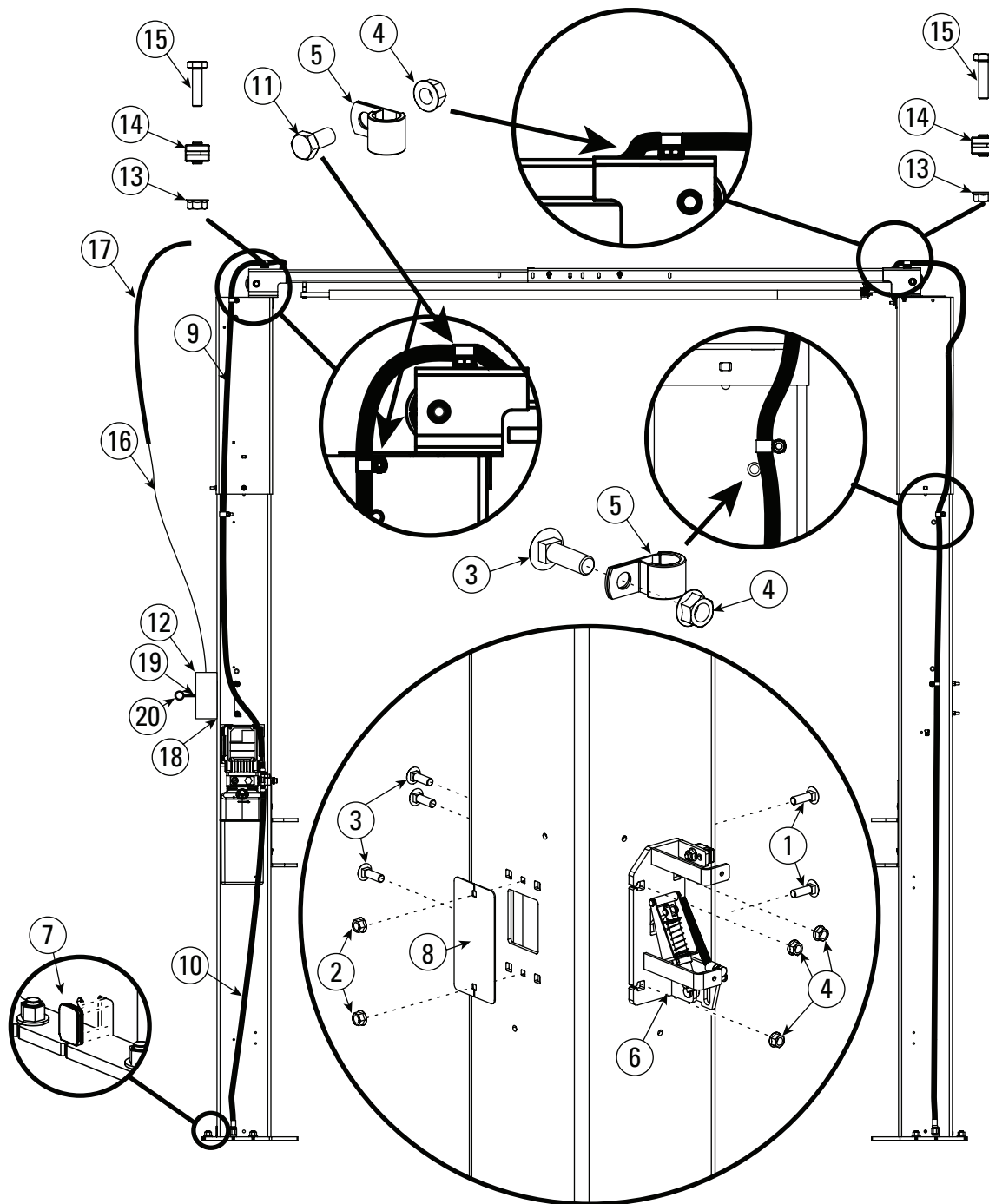
**OWNERS RECORD**  
 Complete information at right and keep in a safe place.

Date Installed \_\_\_\_\_  
 Installed in Bay # \_\_\_\_\_  
 Power Unit Serial # \_\_\_\_\_  
 Power Unit Model # \_\_\_\_\_  
 Lift Serial # \_\_\_\_\_  
 Lift Model # \_\_\_\_\_

**NOTE:** For replacement parts -See your nearest Rotary Parts Distributor.



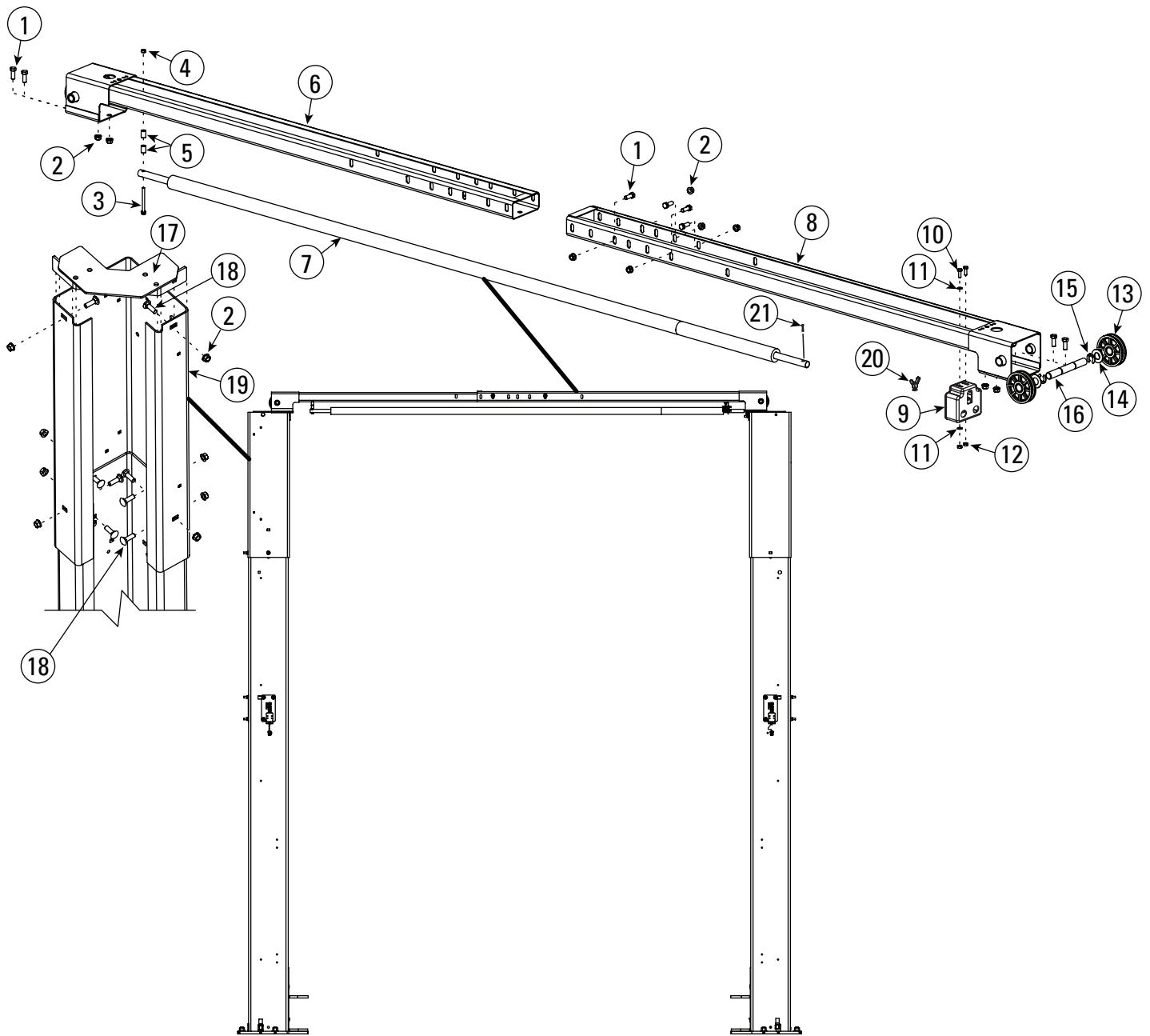
**PB2-2-51**  
 Rev. A 10/7/2014



### Hydraulic Hose And Locking Latch Detail

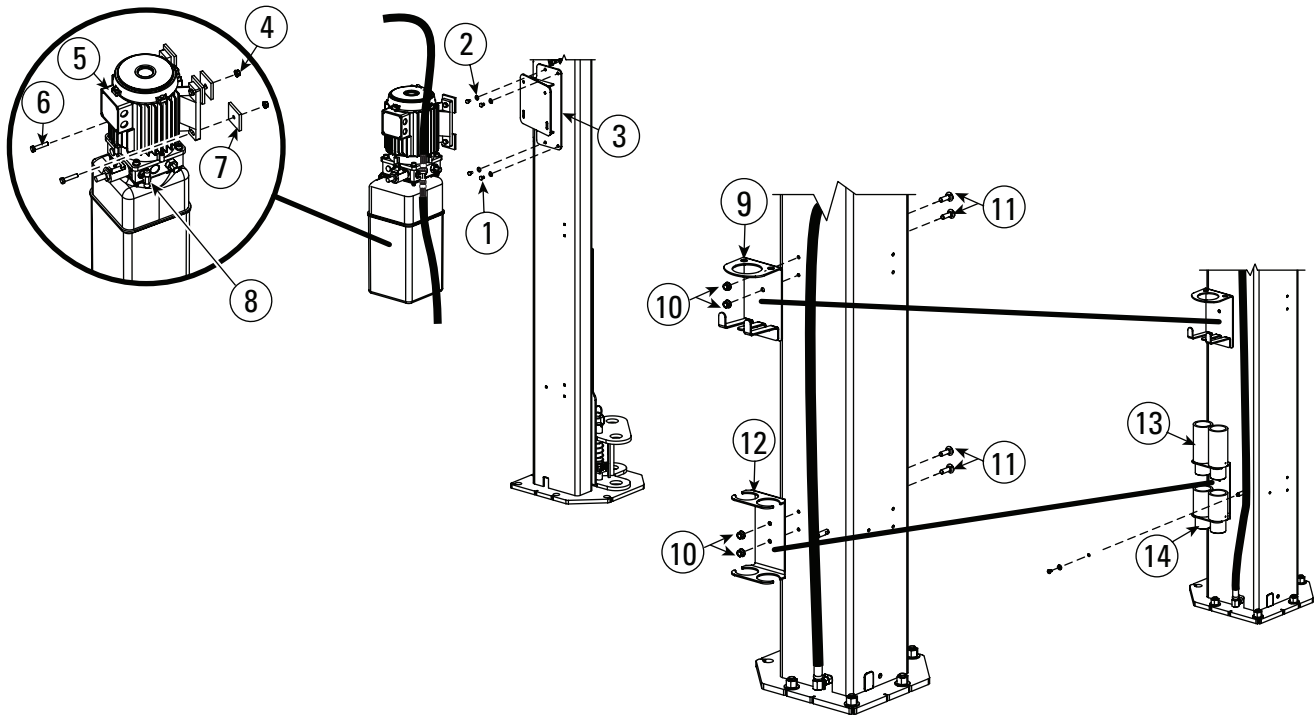
|   |   |         |
|---|---|---------|
| 1 | M6 x 1.0 x 12mm Lg. carriage bolt, plated             | 41658   |
| 2 | M6 x 1.0 serrated flanged locknut, plated             | 41656   |
| 3 | M10 x 1.5 x 30mm Lg. carriage bolt, grade 8.8, plated | 41648   |
| 4 | M10 x 1.5 serrated flanged locknut, plated            | 41655   |
| 5 | Hose clamp  | N3126   |
| 6 | Locking latch assembly                                | N624    |
| 7 | Lower column hole plug                                | FA964   |
| 8 | Lock hole cover                                       | N1224-8 |
| 9 | Overhead hydraulic hose                               | N3133   |

|    |  |           |
|----|--|-----------|
| 10 | Power unit hydraulic hose                    | N3132     |
| 11 | M10 x 1.5 x 20mm Lg. HHCS, grade 8.8, plated | 41536     |
| 12 | Slave Slide Cover                            | N624-28   |
|    | Locking Latch Cover                          | N624-27   |
| 13 | 1/4" Flanged Lock Nut                        | 40641     |
| 14 | Cable End Bracket                            | N619      |
| 15 | 1/4"-20 x HHCS                               | 40108     |
| 16 | Latch Cable                                  | FJ7600    |
| 17 | Cable Sheath                                 | N624-29   |
| 18 | M6 x 12mm Phillips PHMS                      | 41575     |
| 19 | Latch Release Handle                         | FJ7382-18 |
| 20 | Latch Release Handle Ball                    | FC134-91  |



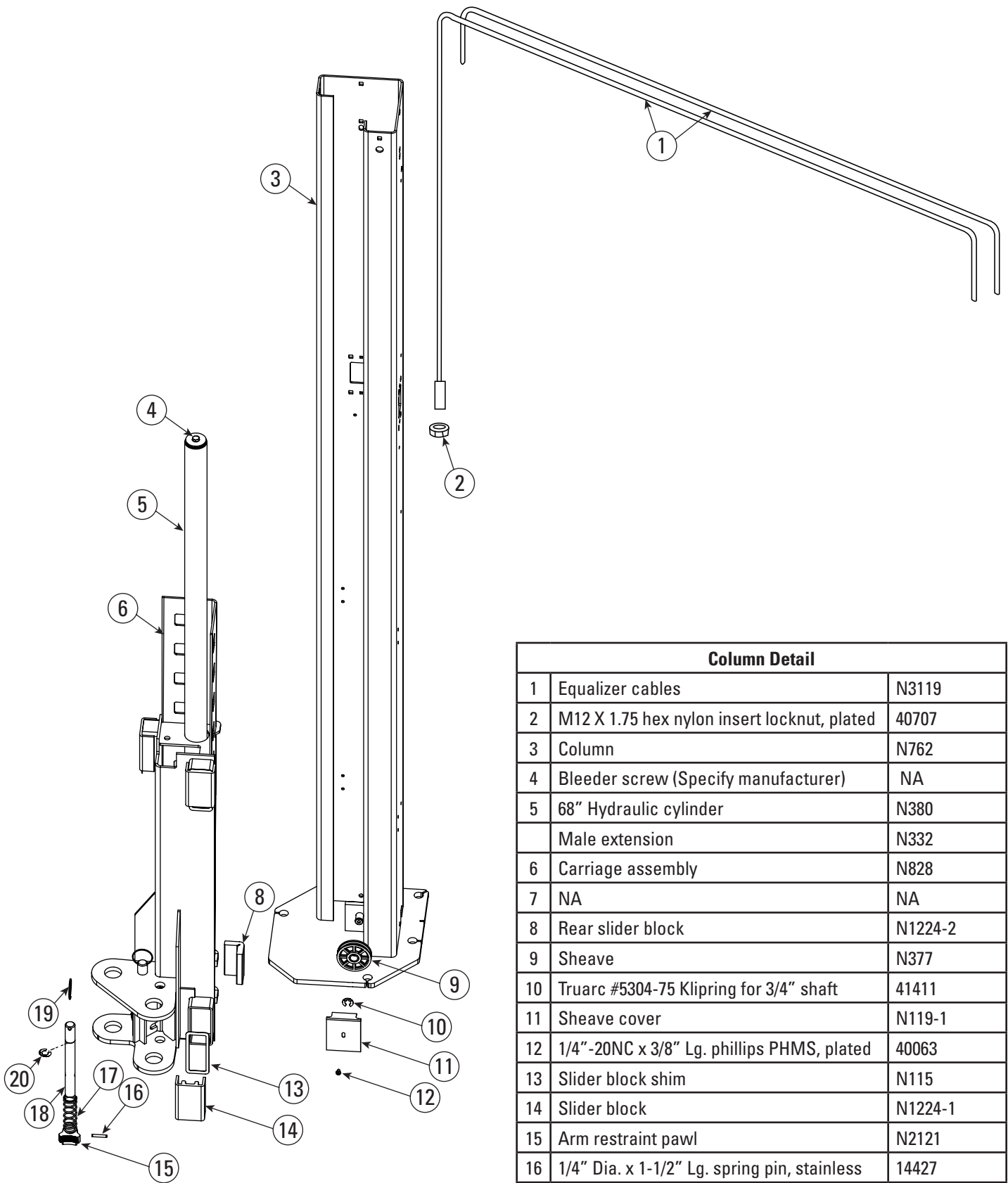
| Overhead And Extension Detail |  |        |
|-------------------------------|--|--------|
| 1                             | M10 x 1.5 x 20mm Lg. HHCS, grade 8.8, plated | 41536  |
| 2                             | M10 x 1.5 serrated flanged locknut, plated   | 41655  |
| 3                             | M6 x 1.0 x 70mm Lg. HHCS, plated             | 41660  |
| 4                             | M6 x 1.0 nylock nut, plated                  | 41664  |
| 5                             | Spacer                                       | FJ7871 |
| 6                             | Right hand overhead                          | N481-1 |
| 7                             | Overhead switch bar                          |        |
|                               | Single Phase                                 | N467   |
|                               | Three Phase                                  | N434   |
| 8                             | Left hand overhead                           | N480-1 |
| 9                             | Overhead switch assembly                     |        |
|                               | Single Phase                                 | N413   |
|                               | Three Phase                                  | N432   |

|    |   |          |
|----|---|----------|
| 10 | M6 x 1.0 x 20mm Lg. HHCS, plated                            | 41413    |
| 11 | M6 external tooth lockwasher, plated                        | 41599    |
| 12 | M6 x 1.0 hex nut, plated                                    | 41661    |
| 13 | Overhead sheave   | N377     |
| 14 | 1-1/2" O.D. x .760-.770" I.D. x .045" thick machine bushing | 41388    |
| 15 | Truarc #5304-75 Klipring for 3/4" shaft                     | 41411    |
| 16 | Sheave shaft  | FJ7444-8 |
| 17 | Overhead mounting bracket                                   | N4101    |
| 18 | M10 x 1.5 x 20mm Lg. carriage bolt, grade 8.8, plated       | 41646    |
| 19 | Column extension  | N4108-1  |
| 20 | Actuator Assembly (Three Phase)                             | N432-5   |
| 21 | 1/8"x1" Lg. Cotter Pin                                      | 41200    |

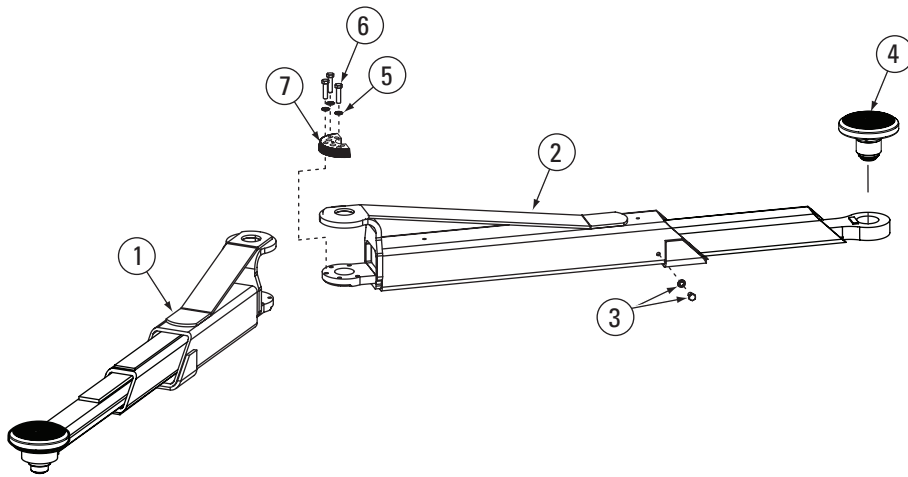


| Power Unit/Enclosure/Tool Holder Detail |  |       |
|---|--|-------|
| 1                                       | M8 x 1.25 x 12mm HHCS                        |       |
| 2                                       | M8 Flat Washer                               | 41548 |
| 3                                       | Power Unit Bracket                           | N763  |
| 4                                       | M8 x 1.25 serrated flanged locknut, plated   | 41663 |
| 5                                       | Power unit (3Ø 208-230/460V 50/60Hz.)        | P3353 |
|   | Power unit (1Ø 208-230V 60 Hz.)              | P3352 |
|   | Power unit (1Ø 208-230V 50 Hz.)              | P3355 |
|   | Power unit (3Ø 575V 60 Hz.)                  | P3356 |
| 6                                       | M8 x 1.25 x 40mm Lg. HHCS, grade 8.8, plated | 41662 |
| 7                                       | Power unit spacer pad                        | FA965 |

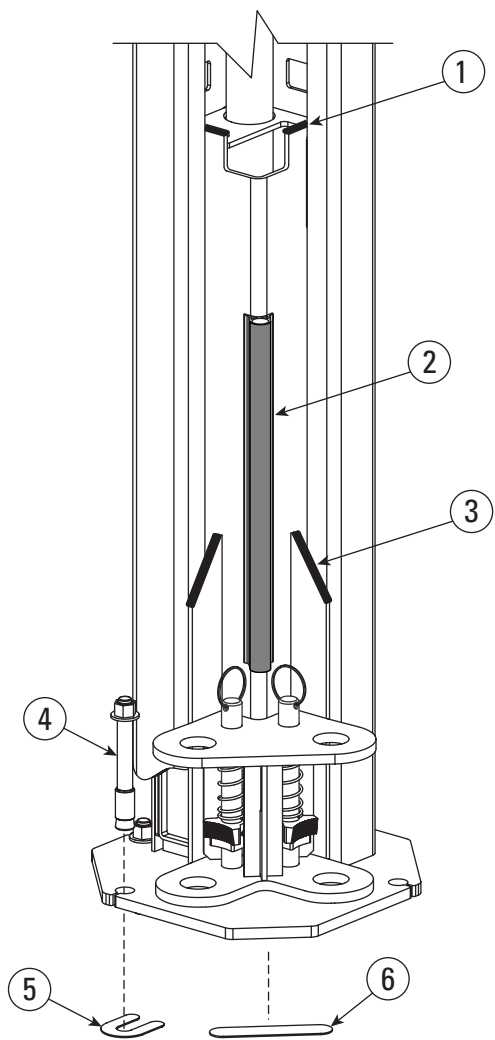
|    |  |          |
|----|--|----------|
| 8  | Branch tee adapter                                   | FJ7668   |
| 9  | Tool holder  | FA5194-1 |
| 10 | M6 x 1.0 serrated flanged locknut, plated            | 41656    |
| 11 | M6 x 1.0 x 16mm Lg. carriage bolt, grade 8.8, plated | 41647    |
| 12 | Adapter rack   | FJ6199-1 |
| 13 | 130mm adapter  | FJ6171-2 |
| 14 | 90mm adapter   | FJ6171-1 |
| 15 | 3Ø Drum Switch Assy (not shown)                      | FA7366   |



| Column Detail |  |          |
|---------------|--|----------|
| 1             | Equalizer cables                             | N3119    |
| 2             | M12 X 1.75 hex nylon insert locknut, plated  | 40707    |
| 3             | Column                                       | N762     |
| 4             | Bleeder screw (Specify manufacturer)         | NA       |
| 5             | 68" Hydraulic cylinder                       | N380     |
|               | Male extension                               | N332     |
| 6             | Carriage assembly                            | N828     |
| 7             | NA   | NA       |
| 8             | Rear slider block                            | N1224-2  |
| 9             | Sheave                                       | N377     |
| 10            | Truarc #5304-75 Klipring for 3/4" shaft      | 41411    |
| 11            | Sheave cover                                 | N119-1   |
| 12            | 1/4"-20NC x 3/8" Lg. phillips PHMS, plated   | 40063    |
| 13            | Slider block shim                            | N115     |
| 14            | Slider block                                 | N1224-1  |
| 15            | Arm restraint pawl                           | N2121    |
| 16            | 1/4" Dia. x 1-1/2" Lg. spring pin, stainless | 14427    |
| 17            | Arm restraint spring                         | FJ7656-2 |
| 18            | Actuator pin                                 | N121-1   |
| 19            | Actuator pin handle                          | FJ7985-1 |
| 20            | Retaining ring                               | N119-3   |



| Arm Detail |  |        |
|------------|--|--------|
| 1          | Front 3-stage arm                          | N2224  |
| 2          | Rear arm                                   | N2225  |
| 3          | Stop bolt assembly                         | N219   |
| 4          | Low profile adapter assembly               | FJ6202 |
| 5          | 3/8" spring lockwasher, plated             | 40818  |
| 6          | 3/8" - 16NC x 1-1/2" HHCS, grade 8, plated | 40373  |
| 7          | Restraint gear                             | N2122  |



| Shim/BumperDetail |                               |          |
|-------------------|-------------------------------|----------|
| 1                 | Upper carriage bumper         | FA962    |
| 2                 | Column door bumper            | FA961    |
| 3                 | Carriage gusset bumper        | FA941    |
| 4                 | 3/4" x 5 1/2" Lg. anchor bolt | FJ7380   |
| 5                 | U shim                        | FJ716-6  |
| 6                 | Front shim                    | FJ7659-3 |

| DATE       | REV. | DESCRIPTION        |
|------------|------|--------------------|
| 05/21/2014 | -    | New issue.         |
| 10/07/2014 | A    | Add 3Ø/60Hz P3356. |

**Rotary World Headquarters**  
 2700 Lanier Drive  
 Madison, IN 47250, USA  
[www.rotarylif.com](http://www.rotarylif.com)

**North America Contact Information**

Tech. Support:  
 p 800.445.5438  
 f 800.578.5438  
 e [userlink@rotarylif.com](mailto:userlink@rotarylif.com)  
 Sales:  
 p 800.640.5438  
 f 800.578.5438  
 e [userlink@rotarylif.com](mailto:userlink@rotarylif.com)

**World Wide Contact Information**

World Headquarters/USA: 1.812.273.1622  
 Canada: 1.905.812.9920  
 European Headquarters/Germany: +49.771.9233.0  
 United Kingdom: +44.178.747.7711  
 Australasia: +60.3.7660.0285  
 Latin America / Caribbean: +54.3488.431.608  
 Middle East / Northern Africa: +49.771.9233.0

**© Vehicle Service Group<sup>SM</sup>**

Printed in U.S.A., All Rights Reserved. Unless otherwise indicated, ROTARY, and all other trademarks are property of Dover Corporation and its affiliates.

