

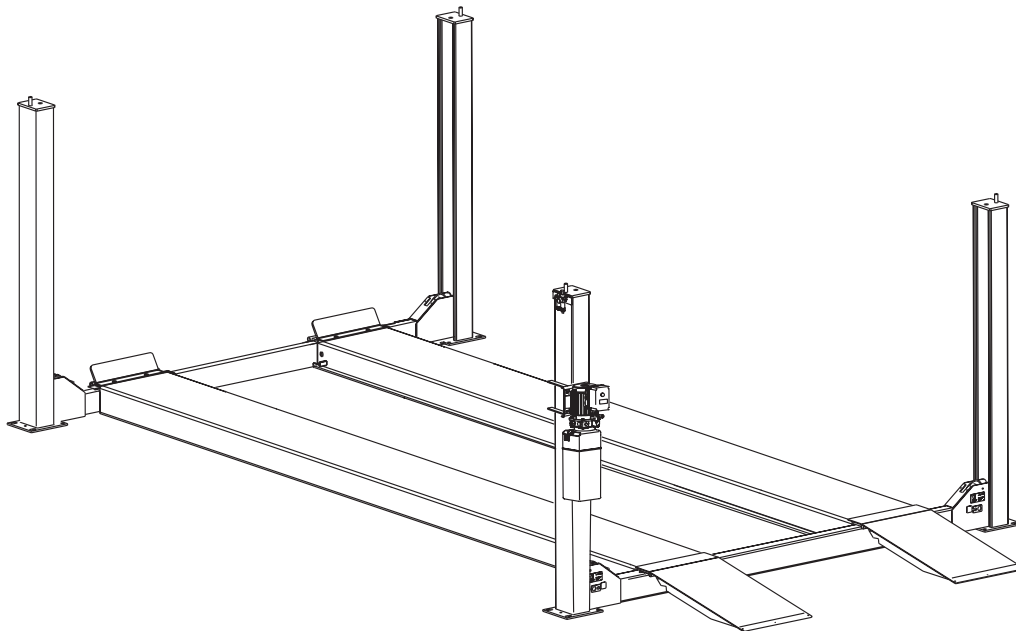


SM88

Four Post Surface Mounted Lift

Capacity 4000 kg. (8800 lbs)

2680 kg. max axle load (5900 lbs max axle load)



P
A
R
T
S

B
R
E
A
K
D
O
W
N

IMPORTANT: When ordering parts or requesting service always give exact model and power unit serial number. Model number is shown on nameplate attached to air lock release valve. Power unit serial number is located on side of power unit.

OWNERS RECORD
Complete information at right and keep in a safe place.

Date Installed _____

Installed in Bay # _____

Power Unit Serial # _____

Power Unit Model # _____

Lift Serial # _____

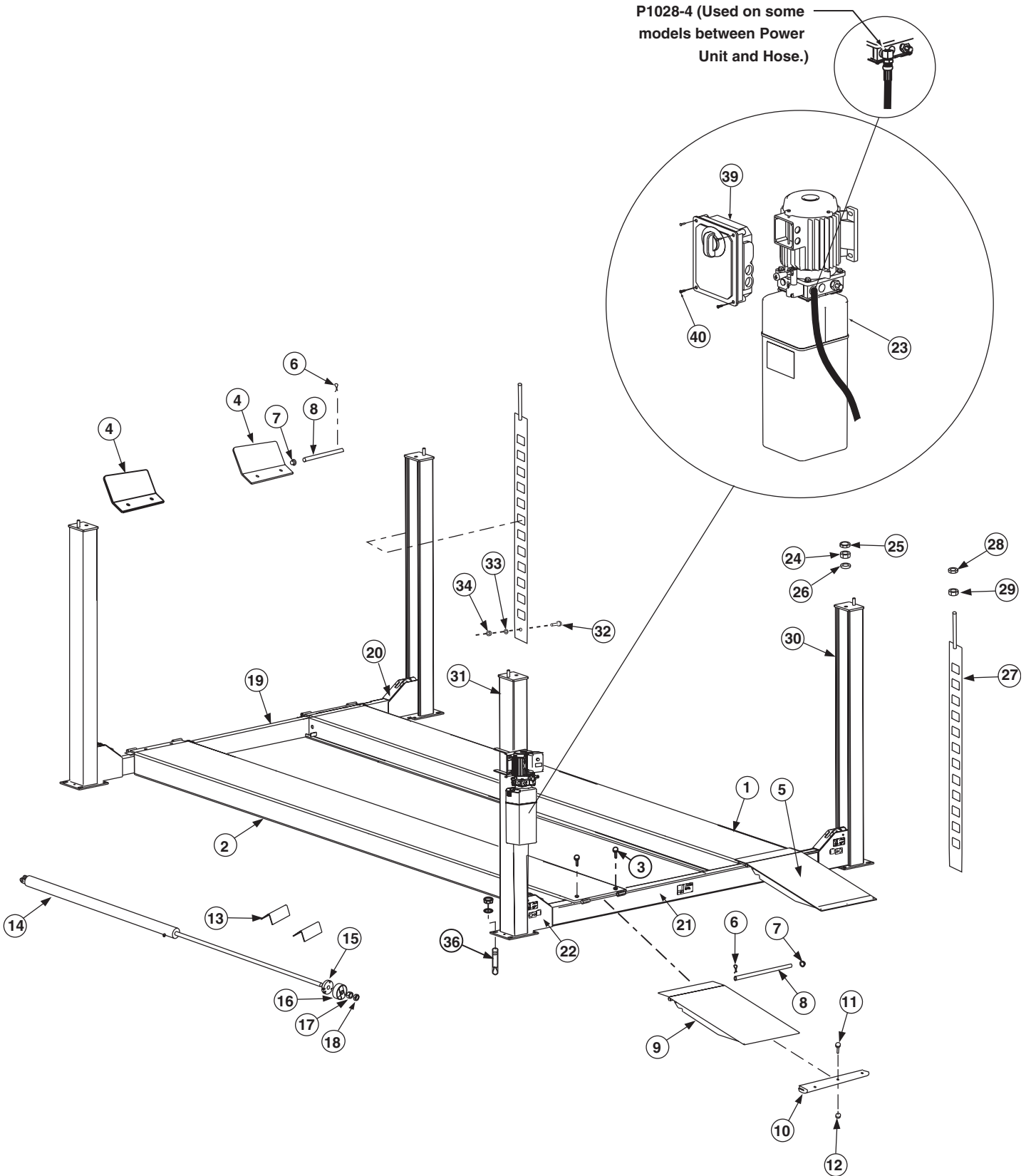
Lift Model # _____

NOTE: For replacement parts -See your nearest Rotary Parts Distributor.

PB2-70-2-1
Rev. F 02/10/2005

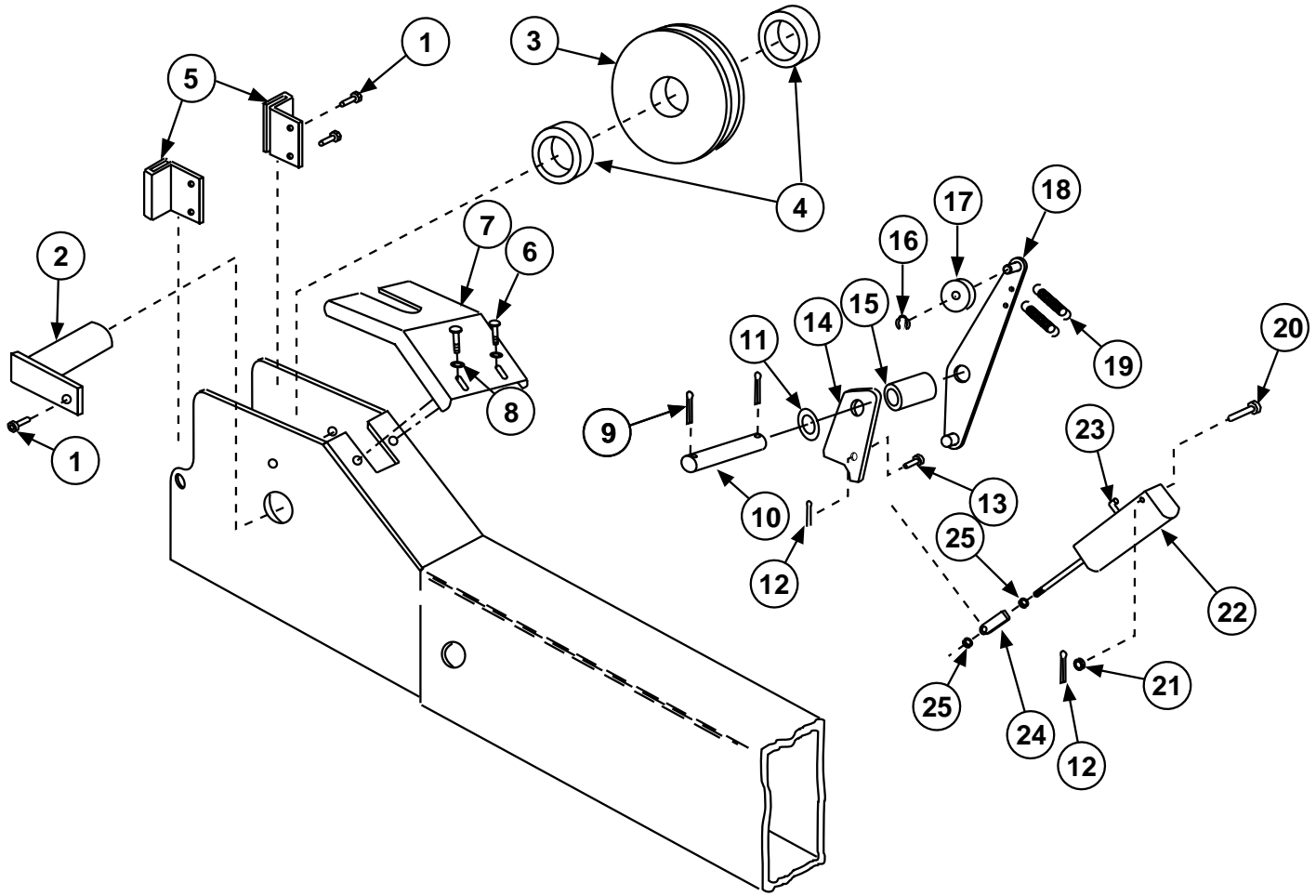
LP30072

RUNWAYS		
LIFT MODEL	Left Hand Runway Assembly <i>(Includes cylinder, cables and sheaves)</i>	Right Hand Runway Weldment
SM88 / 158 1/2" WB	S110038	S120085
SM88 / 182 1/2" WB	S110032	S120067



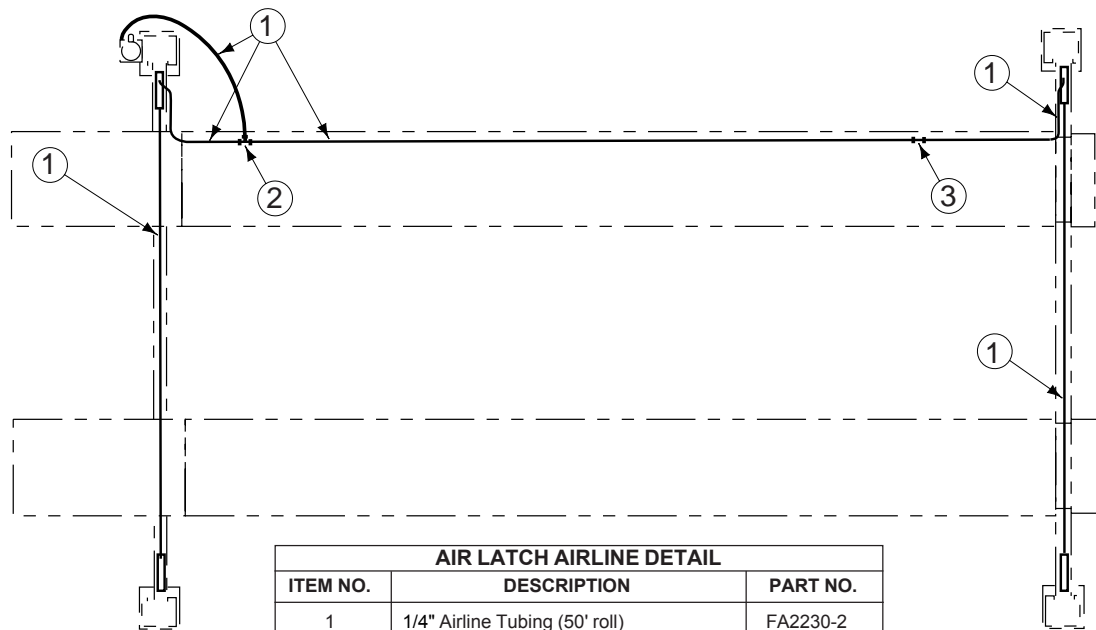
P1028-4 (Used on some models between Power Unit and Hose.)

SM88 PARTS			
ITEM NO.	DESCRIPTION	PART NO.	
		SM88	
1	R.H. Runway Assembly	Refer to Table on Opposite Page	
2	L.H. Runway Assembly (Includes cylinder, cables and sheaves)		
3	1/2" — 13NC x 1 1/4" Flg. Whiz-Lock HHCS (High Strength)	40279	
4	Wheel Stop	FC342	
5	Ramp Chock Assembly	S110016	
6	5/32" x 1" Lg. Cotter Pin	41202	
7	5/8" Push Nut Fastener — TRW #PW625019 Or Equal	FC5179-4	
8	Hinge Pin	FC134-99	
9	Ramp Chock Weld	S120072	
10	Ramp Chock Slide	FC134-33	
11	#10-24NC x 3/4" SLTRUSSHMS	40050	
12	#10-24NC Flg. Whiz-Lock Nut	S120030	
13	Triangular Wheel Chock	FC320	
14	Hydraulic Cylinder	S130002	
15	Cable Pull Bar	S120075	
16	Cable Retainer	S120068	
17	1 3/8"-6NC Hex Nut	40771	
18	1 3/8"-6NC Hex Jam Nut	40773	
19	Front Yoke Weldment	S120084	
20	Front Yoke Ass'y (Including Latches)	S110022	
21	Rear Yoke Weldment	S120078	
22	Rear Yoke Ass'y (Including Latches)	S110024	
23	Power Unit	Single Phase	P1086
		3-phase	P1085
24	7/8"-9NC Hex Nut	40765	
25	7/8"-9NC Hex Jam Nut	40766	
26	7/8" Flat Washer	41073	
27	Latch Bar	S120028	
28	3/4"-10NC Hex Jam Nut	40759	
29	3/4"-10NC Hex Nut	40760	
30	Column	S110049	
31	Power Unit Column	S120033	
32	Bolt	40782	
33	Washer	40781	
34	Nut	40642	
35	N/A	N/A	
36	5/8" Anchor Bolt	FC5228	
37	N/A	N/A	
38	N/A	N/A	
39	Control Box	FA7203	
	Capacitor Box	FA7147-1	
	Capacitor Box Cover Plate	FA7203-1	
	Drum Switch	FA7205	
	Drum Switch Handle	FA7205-1	
40	M5 x 10 PHMS, Plated	40275	

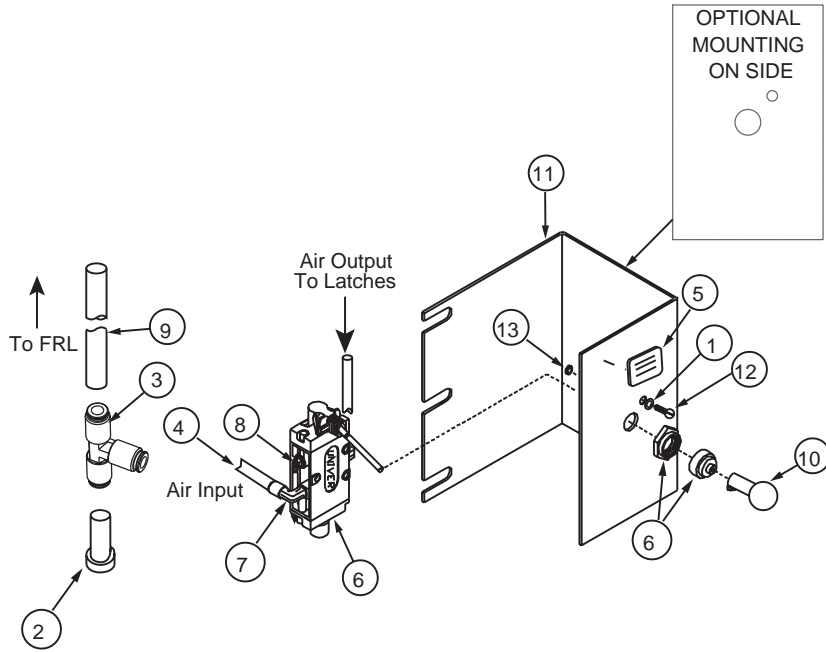


YOKE END DETAIL

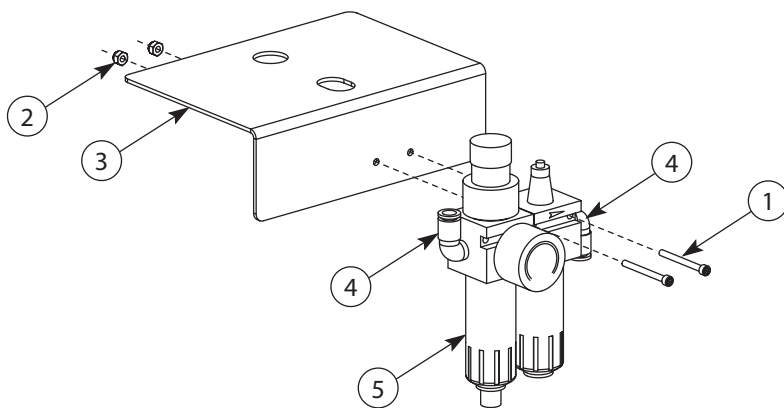
ITEM	DESCRIPTION	PART NO.	ITEM	DESCRIPTION	PART NO.
1	5/16"-18NC x 3/4" Lg. Hex Head Cap Screw	40252	13	Clevis Pin	S130051
2	Sheave	standard FC5224-21	14	Latch	FC5706-10
		chrome plated FC5728-7	15	Spacer	FC5706-09
3	Pin Sheave	FC5804-2	16	3/8" Snap Ring TRUARC #5304-37	41410
4	Yoke Sheave Spacer	FC5927-10	17	Slack Cable Roller	FC553-21
5	Slider	FC5706-16	18	Kicker	S120103
6	1/4" 20NC HHTS x 1/2" Lg.	40067	19	Extension Spring	FC522-25
7	Guard	FC5802-18	20	Clevis Pin	S130051
8	1/4" Plain Washer	40780	21	1/4" Flat Washer	40782
9	Cotter Pin, 1/8" X 1 1/4"	41201	22	Air Cylinder	S130017
10	Latch Shaft	FC5901-7	23	Elbow	FC5224-39
11	Washer	FC5301-98	24	Clevis	FC5706-7
12	1/4" Hairpin Cotter Pin (.05" dia. wire)	41901	25	1/4" -28NF Hex Nut	40622
			26	1/8" NPT Plug	FC5708-4



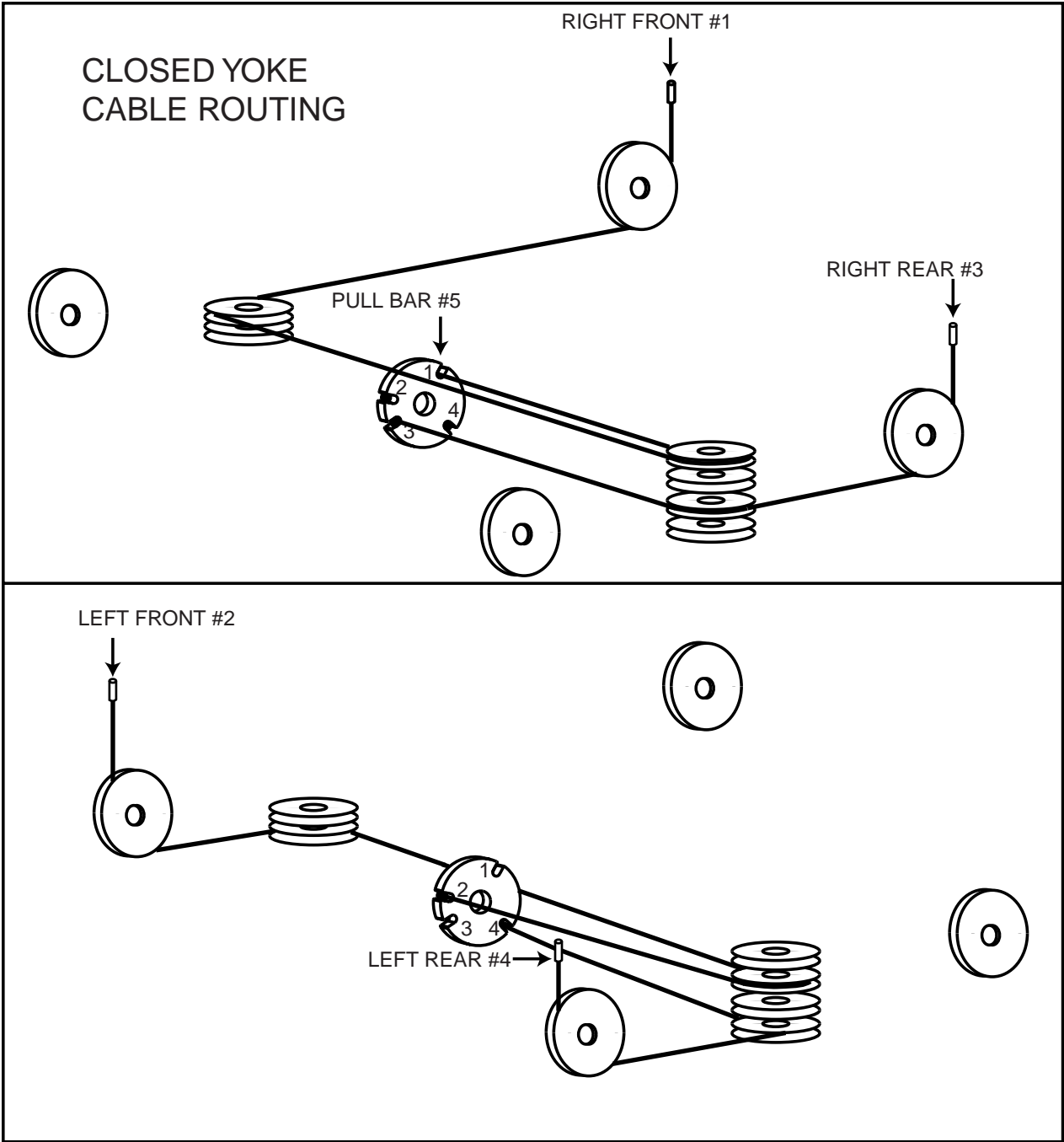
AIR LATCH AIRLINE DETAIL		
ITEM NO.	DESCRIPTION	PART NO.
1	1/4" Airline Tubing (50' roll)	FA2230-2
2	Union Tee	FC5225-46
3	Union	FC5225-98



AIR LOCK RELEASE VALVE DETAIL		
ITEM NO.	DESCRIPTION	PART NO.
1	#8 SAE Flat Washer	40788
2	3/8" Plug	FA2230-16
3	Union Tee	FA2242-1
4	1/4" Tubing	FC2230-2
5	Nameplate	NP280
6	Control Ass'y.	T140073
7	Swivel Elbow	T140074
8	Filter / Muffler	T140075
9	3/8" tubing (40ft roll)	FA2230-15
10	Air Lock Handle	T140119
11	Control Bracket	FA3217
12	#8-32NC x 1-1/2" PHMS	40007
13	#8-32NC Nylon Locknut	40649

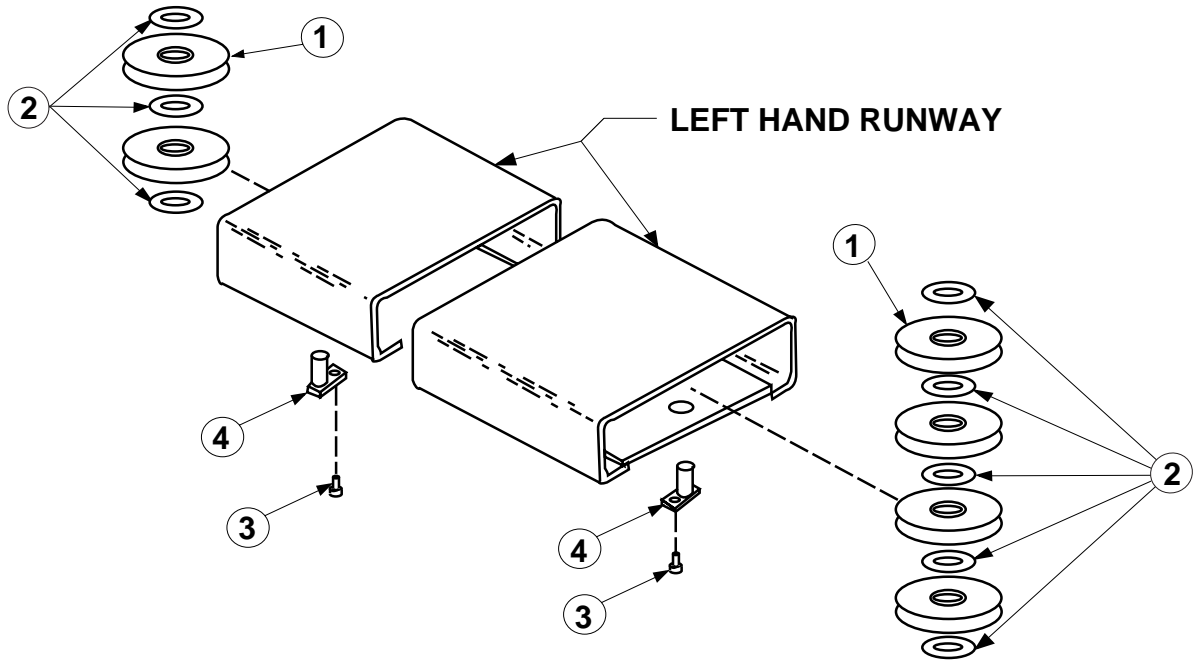


FRL DETAIL		
ITEM NO.	DESCRIPTION	PART NO.
1	#8-32 x 1-3/4" Hex SHCS	40432
2	#8-32 Nylon Lock Nut	40649
3	Adapter Bracket	S120569
4	Elbow	FC147-7
5	Filter/Regulator/Lubricator	S130065

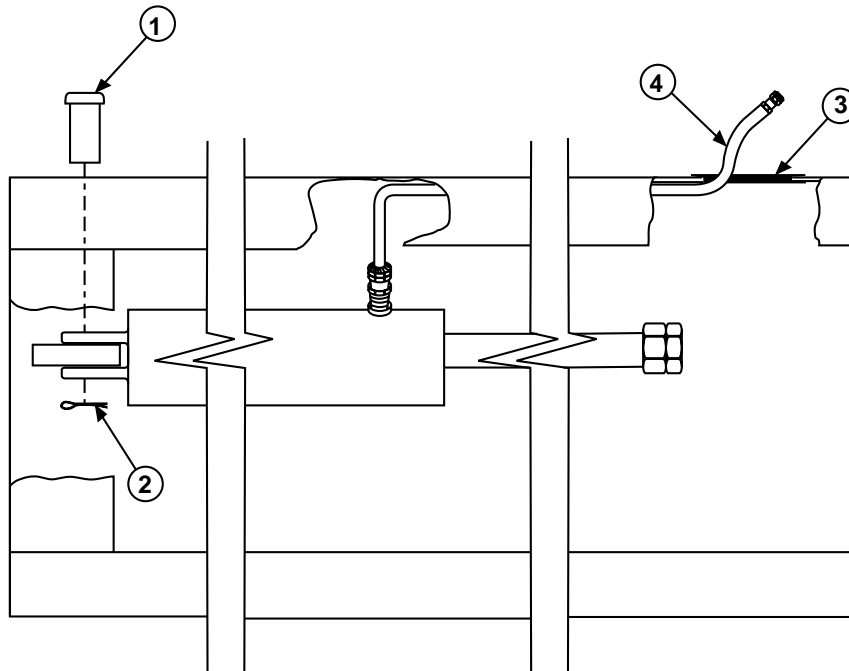


CABLES		PART NO.	
ITEM NO.	DESCRIPTION		SM88
		158 1/2"	182 1/2"
1	Right Front Cable	S130027	S130025
2	Left Front Cable	S130026	S130024
3	Right Rear Cable		S130019
4	Left Rear Cable		S130018
5	Pull Bar	S120075	S120075

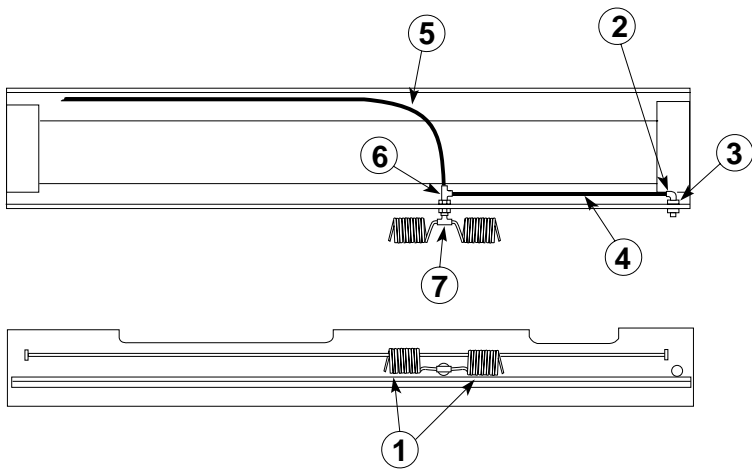
* CABLE RETAINER NOT SHOWN TO CLAIRIFY ILLUSTRATION OF CABLE ROUTING



SHEAVE DETAIL		
ITEM NO.	DESCRIPTION	PART NO.
1	Sheave	FC5804-2
2	Plastic Bearing	FC5843-3
3	5/16"-18NC HHCS x 3/4" Lg.	40401
4	Sheave Pin	FC555-1

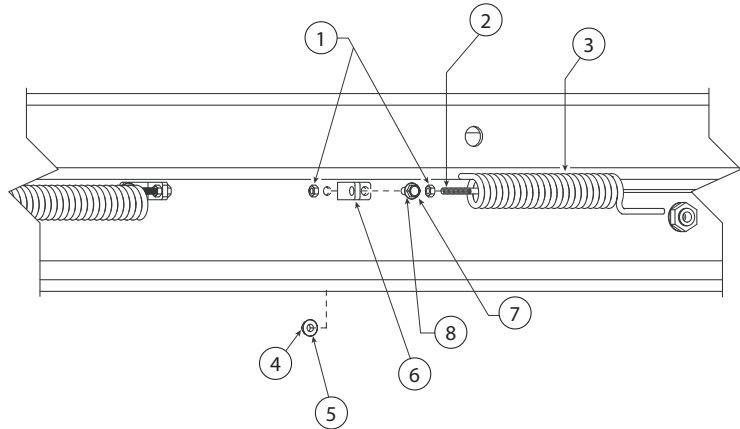


HYDRAULIC HOSE DETAIL		
ITEM NO.	DESCRIPTION	
1	Clevis Pin	FC5346-1
2	3/16" x 1-1/4" Lg. Cotter Pin	41247
3	Grommet	2 1/2" Hole
		1 1/2" Hole
4	Hose	S130012



INTERNAL AIRLINE PARTS		
ITEM NO.	DESCRIPTION	PART NO.
1	Recoil Hose	FC147-14
2	Male Elbow	FC147-7
3	Female Bulkhead	FC147-1
4	Runway Tubing	FC147-6
5	Tubing	FC5313-2
6	Male Run Tee	FC147-3
7	Male Branch Tee	FC147-5

Retainer Cable Detail		
ITEM NO.	DESCRIPTION	PART NO.
1	1/4" x 20NC Hex Nut	40625
2	Airline Retainer Cable (182"/206")	S130078
	Airline Retainer Cable (158")	XS130063
3	Recoil Hose	-
4	3/8" Nut	40660
5	3/8" Lockwasher	40845
6	Retainer Bracket	FC147-9
7	3/8"-16NC x 3/4" Lg. HHCS	40130
8	3/8" Flat Washer	40820



Rotary World Headquarters

2700 Lanier Drive
Madison, IN 47250, USA
www.rotarylif.com

North America Contact Information

Tech. Support: p 800.445.5438
f 800.578.5438
e userlink@rotarylif.com
Sales: p 800.640.5438
f 800.578.5438
e userlink@rotarylif.com

World Wide Contact Information

World Headquarters/USA: 1.812.273.1622
Canada: 1.905.812.9920
European Headquarters/Germany: +49.771.9233.0
United Kingdom: +44.178.747.7711
Australasia: +60.3.7660.0285
Latin America / Caribbean: +54.3488.431.608
Middle East / Africa: 1.812.273.1622



A DOVER COMPANY

