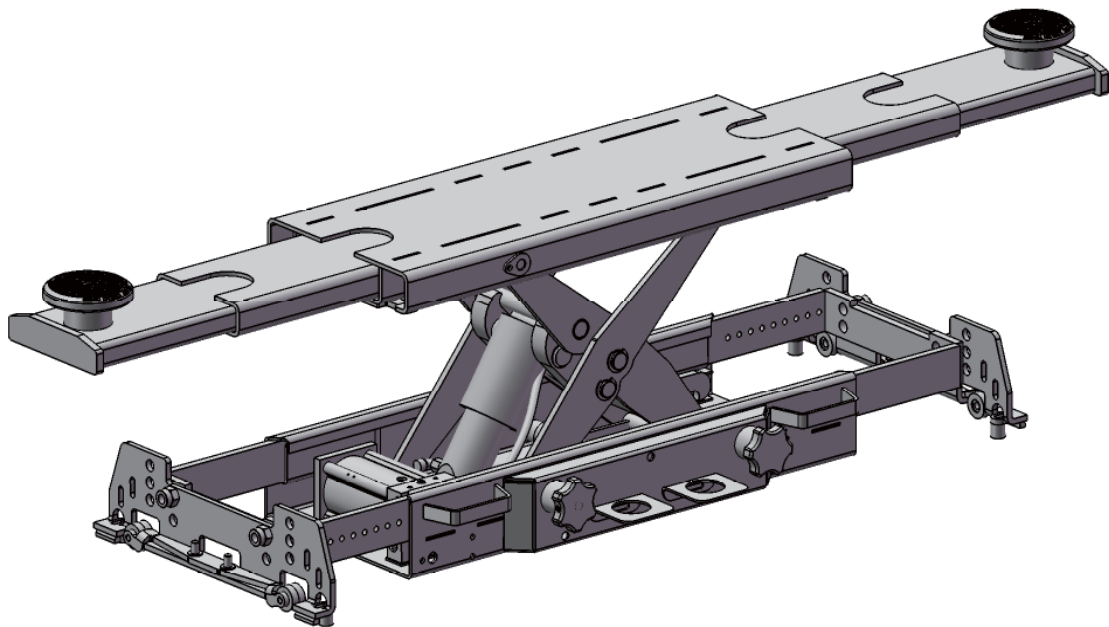




RJ-X26

Rolling Jack

Installation, Safety, Operation, Maintenance Manual



**Rotary Lift Consolidated
(Haimen) Co.,Ltd**
No.1388,East Xiushan
Road,Haimen,Jiangsu
Province,China,226100

Tel: (0086-513)81261262
(0086-513)82100577
Hotline:(0086)800-828-3302
FAX:(0086-513)82109502
www.rotaryliftdasia.com

Special Instructions

- Any damage caused during packing and transportation shall be claimed by the purchaser to the carrier.
- Safety performance has been taken into account during design and manufacture. However, appropriate training and careful operation can enhance safety. The equipment cannot be operated or repaired without reading this manual.
- The equipment may be partially modified without prior notice. And we will not be held responsible for any update of sold products.
- The equipment shall not be used to raise any load exceeding rated lifting weight by 2.6tons.
- Read carefully warning marks on the equipment.

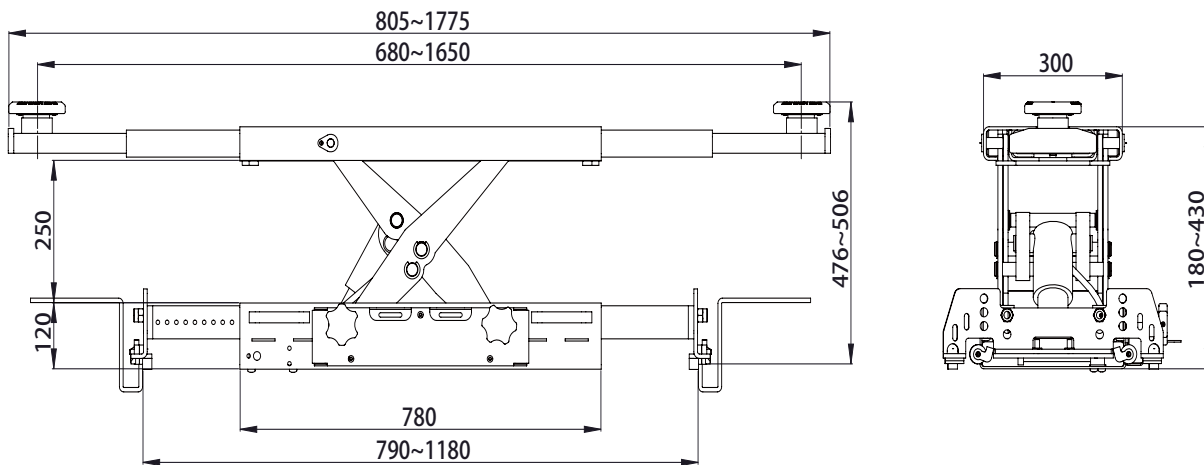
Table of Contents

Safety Instructions.....	3	Trouble Shooting.....	8
Lift Specification.....	3	Parts Breakdown.....	9
Installation.....	4	Packing List.....	16
Operation Instructions.....	5	Optional Parts.....	16
Maintenance Instructions.....	6	Spare Parts.....	16
Safety Label Information.....	7	Hrdraulic Schematic.....	17

Safety Instructions

- Never allow unauthorized or untrained persons to operate rolling jack.
- Thoroughly train all employees in the use and care of rolling jack.
- Never overload rolling jack. Capacity of rolling jack is stated on the nameplate. Capacity should not be exceeded.
- Observe and avoid any pinch point areas of the linkage mechanism.

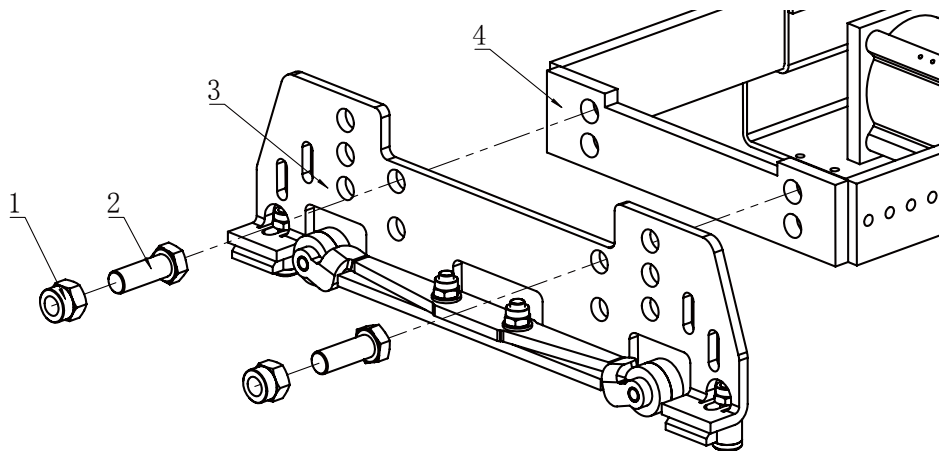
Lift Specification



Capacity	2600kg
Maximum Lift Height	250mm
Overall Height	180mm
Arm Range (Middle to Middle)	680-1650mm
Orbit Width	790-1180mm
Air Pressure	8.5-12Bar
Overall Weight	130kg

Installation

Fig.1



1.M16 Nylon Lock Nut 2.M16×45 HHCS 3.SUPPORT BAR WELDMENT 4.Rolling Jack

Instructions for Support Arms

1. Lift the jacking beam out of the box (you may cut open the box), and place the jacking beam between the ramps in the desired height above the floor, e.g. on a wooden board.

Warning: Only lift with top beam and main frame tied together! If not tied together cylinder will not support the top beam when being lifted, and the top beam will crash when releasing the safety stop.

2. Cut the strips. Take the separate box with the support arms and mount flanges and axles with rolls in holes depending on the desired top beam minimum height compared to the ramps and floor. Be aware that you may have multiple choices for both flanges and axles (please refer to fig. 1). You may also alter the height 12,5 mm by turning the black support arms in the main frame.

Warning: Remember to assembly the screws B20-6*10 again to secure the support arms against crashing.

3. Having placed the jacking beam in the right position grease the axles. Tighten screws and nuts thoroughly.

Warning:To ensure against collapsing (flat support arms, rolls without steering etc.) the support arms must be secured by locking them, once the supports are resting safely in both sides. The relevant supports include 2 square joints with screw and nut to be mounted one in each support arm (please refer to fig. 2). In case of danger of derailing or any other form of crashing it is important to take the relevant precautions, especially for lift types as fig.3. There may be difficulties in having this lift type keep the ramps parallel. It is up to the assessment of the serviceman how to carry out the securing of the support arms in each case.

Fig.2

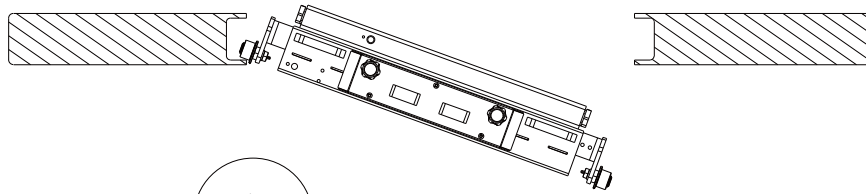
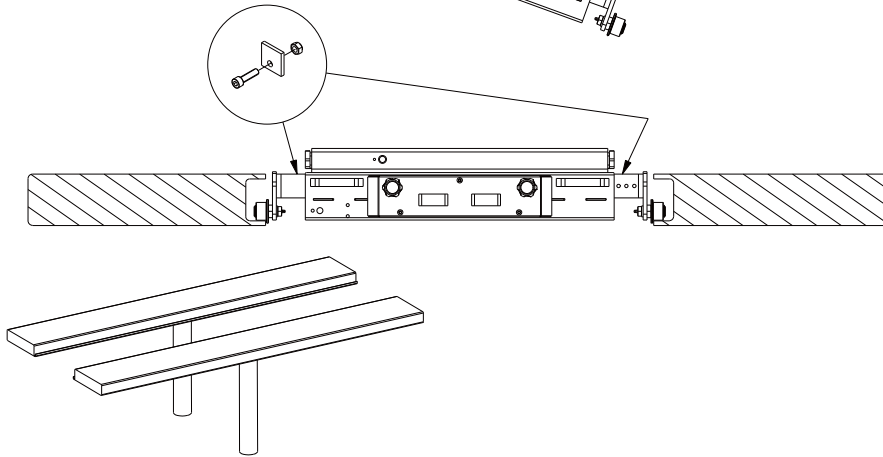


Fig.3



Operation Instructions

1. The jacking beam is only to be mounted on lifts approved by the lift manufacturer for mounting of jacking beams - be aware that not all lifts are approved. Rated beam capacity must be max. 2/3 of vehicle lift capacity.
2. Mount the jacking beam with adequate support arms on horizontal, parallel and solid rails and secure it against crashing before use. See paragraph "Assembly Instructions for Support Arms".
3. The jacking beam has been constructed for operation only by trained personnel, having read and understood this manual.
4. Check before each lift, that the support arms are correctly placed on rail of lift or pit edge.
5. This is a lifting device only. Do not move or transport vehicle with jacking beam.
6. Always lower the jacking beam to the nearest safety stop immediately - or use axle stands for support - before working on vehicle.
7. Do not overload, for instance due to sudden external load. Overload can cause damage or failure of jack.
8. Lift only on points as specified by automaker. During lifting be attentive that the saddles cannot slide.
9. When lifting the complete vehicle by means of 2 jacking beams they shall be placed minimum 0,85 m from each other.
10. Gravity of load must always be placed centrally. When lifting by means of only one saddle always place it in the centre of the jacking beam. Also, the 2 extension arms must only be used simultaneously.
11. The wheels of the vehicle is to point forward and be chocked.
12. No person must remain in, on or under a vehicle when lifted or supported only by the jacking beam.
13. The operator must observe, that the jacking beam can be operated without any danger to himself and others.
14. The jacking beam as well as the safety valve is not to be altered.
15. Maximum air-pressure: 12 bar. Full capacity at 8,5 bar. Failure to follow these warnings may result in loss of load, damage to jack, and/or failure resulting in personal injury or property damage.

Operation

Lifting: Turn left handle clockwise. Lower to the nearest safety stop by turning opposite.

Lowering: Lift a little to allow release of safety stop. Turn both handles counter clockwise (release valve to the left, release for safety stop to the right). Both handles automatically return to neutral.



Maintenance Instructions

Maintenance and repairs must always be carried out by qualified personnel. The air-hydraulic pump needs oil for lubrication of the mechanical parts. It is recommended to install water separator/filter and oil lubricator close to the jacking beam.

Daily: Check jacking beam and supports for damage - and the correct placement of supports.

Monthly: Lubricate all moving parts with oil. Empty the water separator and fill the oil

lubricator.

Oil refill and check: Lift to maximum height without load and remove filler plug (12). Correct oil-level is up to the hole.

WARNING: Do not operate with the filler plug removed (oil tank will be pressurized).

Oil quantity: 0,6 l. - Any good hydraulic oil with viscosity ISO VG 15 can be used.

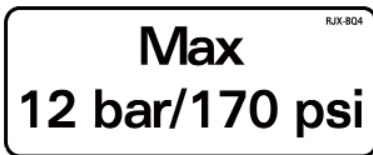
Never use brake fluid!

Safety Label Information

WARNING! Permit only trained personnel to operate rolling jack. After reviewing these instructions, become familiar with the rolling jack controls by running the jack through a few cycles before loading a vehicle on rolling jack. Observe and heed SAFETY and WARNING labels



1. Safety Label (NP945)
Keep hand clear of rolling jack while operation.



2. Air Pressure (RJX-BQ4)
Working air pressure is 8.5-12 bar.



3. Oil Label (RJX-BQ5)
Follow manual Maintenance Instructions.



4. Capacity Label
Capacity is 2,600 kg, forbid over load, forbid unbalance load.

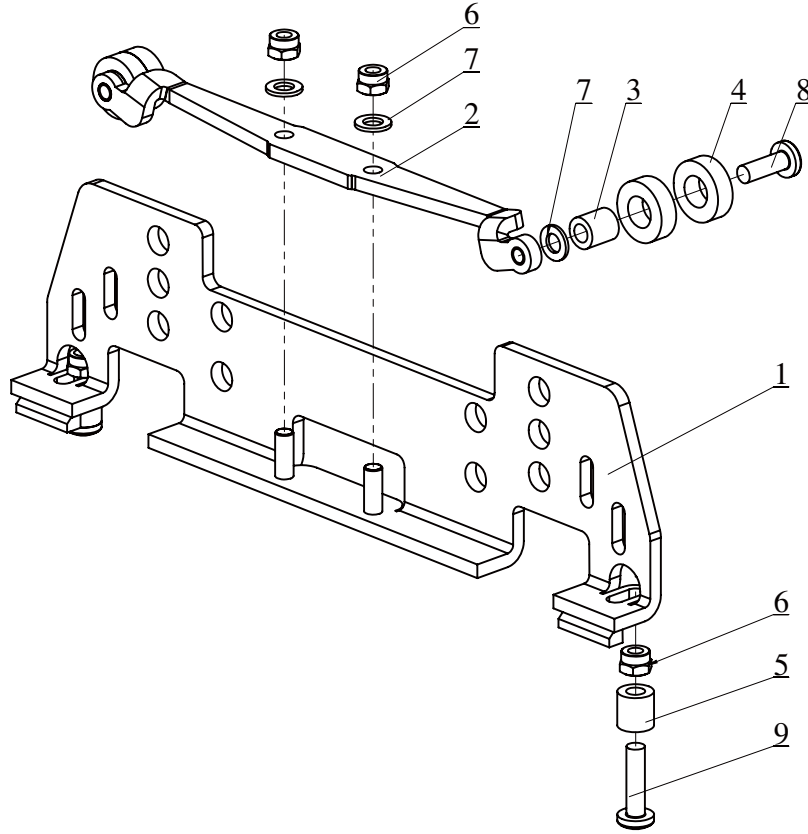
Trouble Shooting

Item	Description	Trouble shooting steps
Pump will not start when air switch is depressed, or pump starts but stalls under load.	<ul style="list-style-type: none"> • Insufficient air supply at pump. • Leak in air supply line. • Restriction in air line (ie.kinks or plugs). • Plugged air filter. • Bad air motor. 	<ul style="list-style-type: none"> • Check air supply: minimum 8.5 bar and 500l/min. • Locate and correct leakage. • Locate and correct restriction. • Remove and install a new filter. • Repair or replace air motor.
Pump runs but lift will not raise after contacting load.	<ul style="list-style-type: none"> • Lift loaded beyond capacity. • External fluid leak at pump, hose or cylinder . • Internal leakage. • Release mechanism damaged or parts missing. • Wrong pump installed on lift. • Pump low on fluid. • Fluid blowing out rear cover of air motor. • Pump malfunctioning. 	<ul style="list-style-type: none"> • Use lift only to rated capacity. • Repair leak, refill reservoir.* • Have pump serviced by an authorized service center. • Replace damaged or missing parts. • Verify pressure rating of pumps meets pressure requirements of lift. • Lower lift and check fluid level. Fill with AW32 hydraulic fluid. Locate and correct leak.* • Pump piston seal leaking, have pump serviced by an authorized service center. • Have pump serviced by an authorized service center.
Pump runs but lift will not raise to full height.	<ul style="list-style-type: none"> • Pump low on fluid. 	<ul style="list-style-type: none"> • Lower lift and check fluid level. Fill with AW32 hydraulic fluid. Locate and correct leak.*
Lift drifts down - will not hold.	<ul style="list-style-type: none"> • Release mechanism damaged or parts missing. • External leakage. • Internal leakage. 	<ul style="list-style-type: none"> • Replace damaged or missing parts. • Locate leak and repair. Refill reservoir.* • Have pump serviced by an authorized service center.

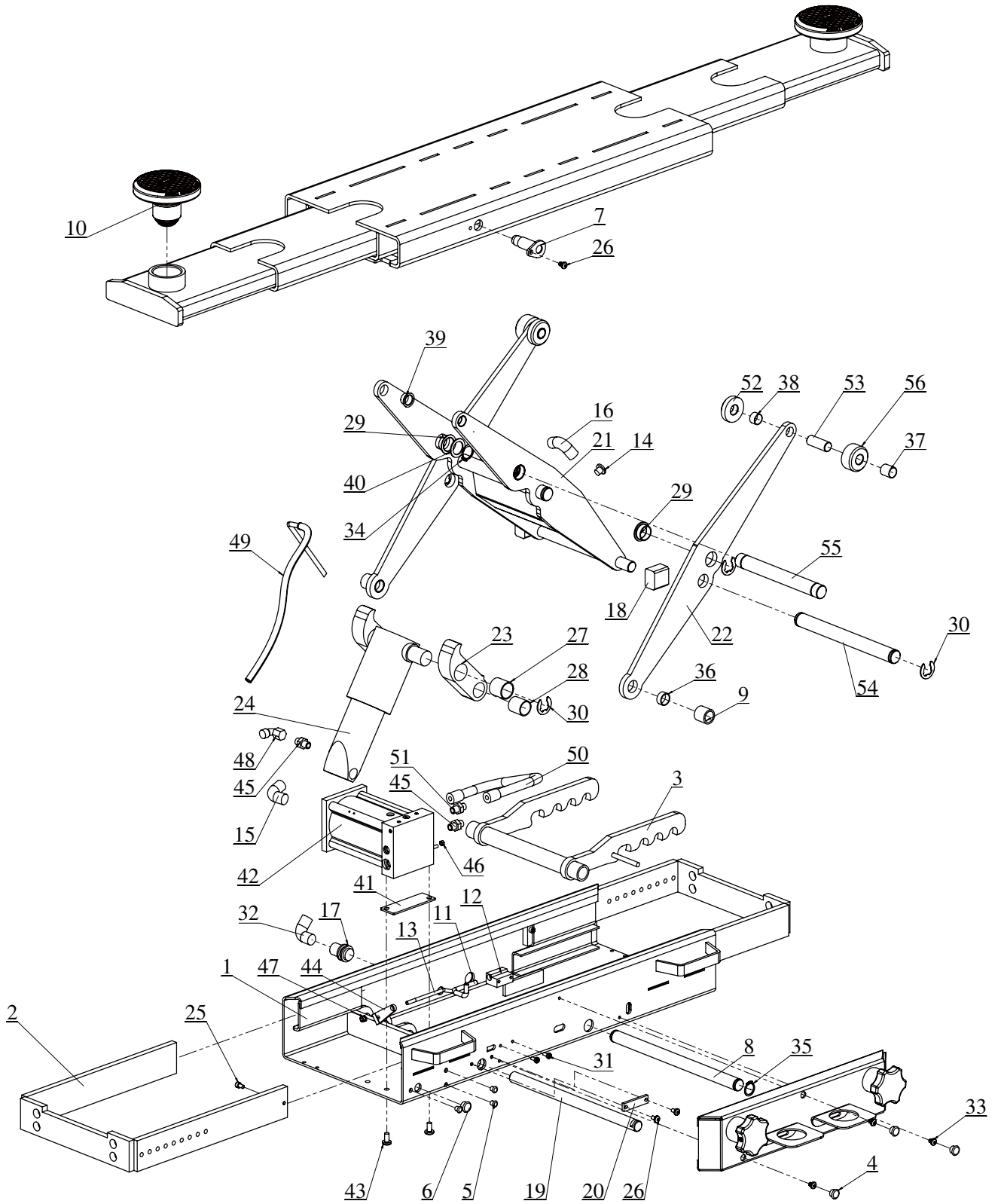
WARNING! * - Do not overfill reservoir. Lift must be completely lowered prior to adding fluid.

WARNING! If the problem continues, call for service.

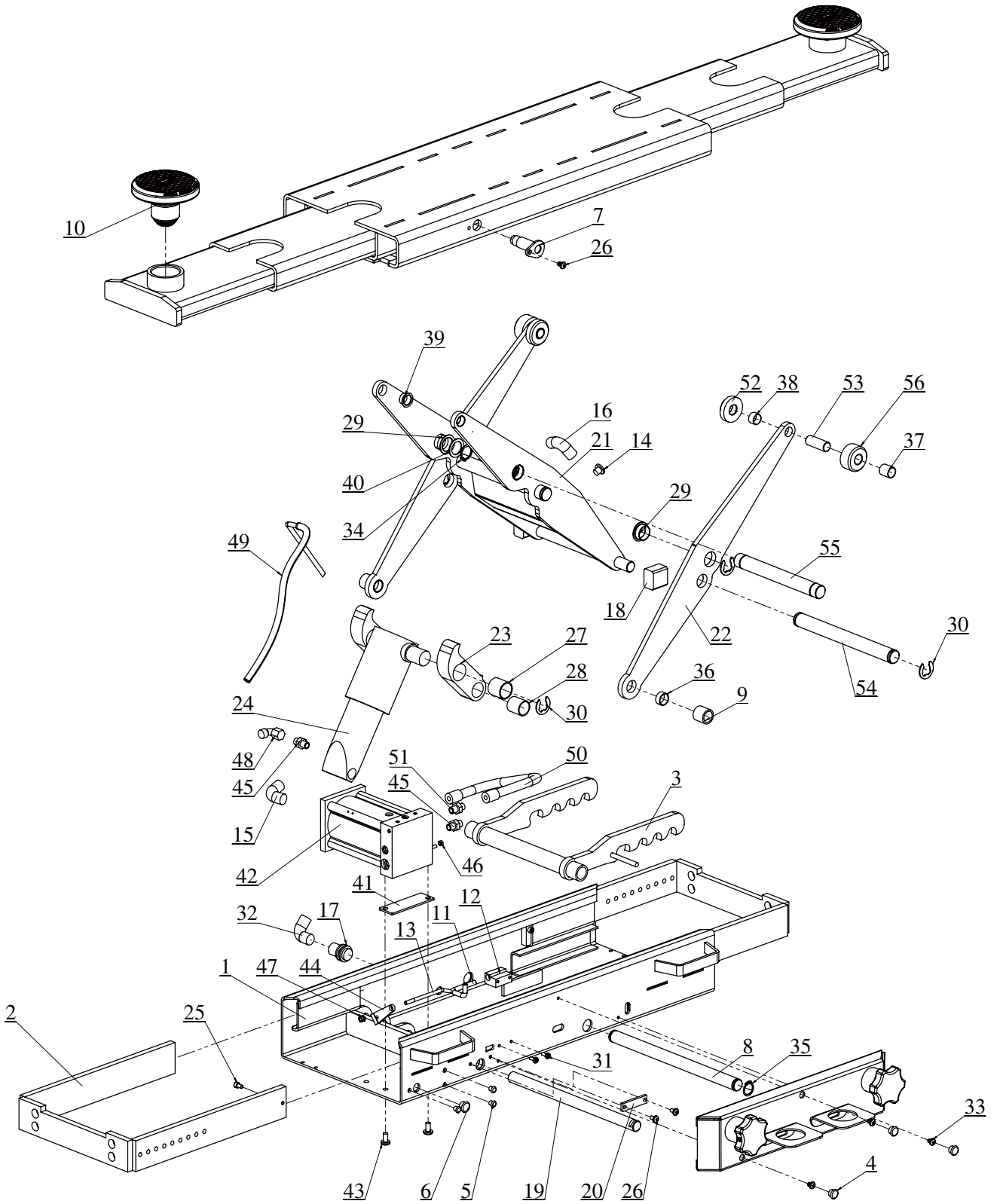
Parts Breakdown



ITEM	NUM	NAME	QTY
1	RJX40-1500	SUPPORT BAR WELDMENT	1
2	RJX40-1007	ROLLER SUPPORT	1
3	RJX40-1011	SPACER	2
4	6202RS	BEARING	4
5	RJX40-1009	RUBBER TUBE	2
6	B33-10	M10 Nylon Lock Nut	4
7	B41-8	φ10 Flat Washer	4
8	B25-M10×30	M10×30 HEX SOC BHCS	2
9	B25-M10×40	M10×40 HEX SOC BHCS	2

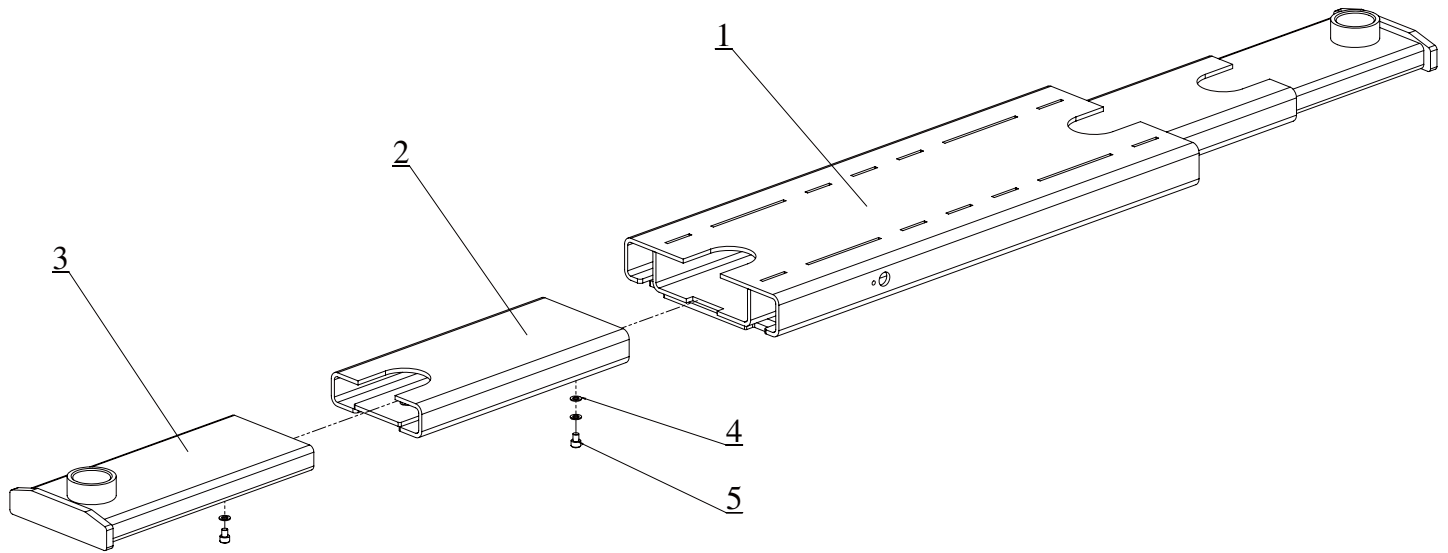


ITEM	NUM	NAME	QTY
1	RJ2600-2100	Base Weldment	1
2	RJ2600-2300	Base Arm Weldment	1
3	RJ2600-2200	Lock Weldment	1
4	HP-13	Plug	3
5	HP-8	Plug	3
6	HP-16	Plug	1
7	RJ2600-1400	Pin Weldment	2
8	RJ2600-3012	Axle	1
9	RJ2600-4006	Sleeve	2
10	G3T-5400	Adapter	2
11	RJX40-2012	Spring	1
12	RJX40-2011	Guiding Valve	1
13	RJ2600-3009	Joystick Weldment	1
14		G1/4 Oil Plug	1
15	EPL6-02	Fitting	1
16	EGPL6-G02	Fitting	1
17	EPMF6-02	Fitting	1
18	RJ2600-4007A	Slider	1
19	RJ2600-3012A	Axle	1
20	RJX40-5003	Locking Plate	1
21	RJ2600-4100	Support Frame Weldment	1
22	RJ2600-4001	Support Plate	2
23	RJ2600-4008	Support Plate	2
24	RJX26-9100	Cylinder	1
25	B20-6×10	M6×10 HEX SOC BHCS	2
26	B25-6×10	M6×10 HEX SOC BHCS	4
27	SF-1 2830	Shaft Sleeve	2
28	SF-1 2530	Shaft Sleeve	2
29	BB2512DU	Shaft Sleeve	4
30	B61-19	φ19 Split Washers	6
31	B25-5×12	M5×12 HEX SOC BHCS	2
32	SPL8-02	Fitting	1
33	B25-5×8	M5×8 HEX SOC BHCS	3
34	B60-25	Spring Washersφ25	2
35	B60-22	Spring Washersφ22	2
36	SF-1 2010	Shaft Sleeve	2
37	SF-1 1822	Shaft Sleeve	2
38	SF-1 1812	Shaft Sleeve	2
39	SF-1F 18120	Shaft Sleeve	2
40	RJ2600-5004	Spacer	2

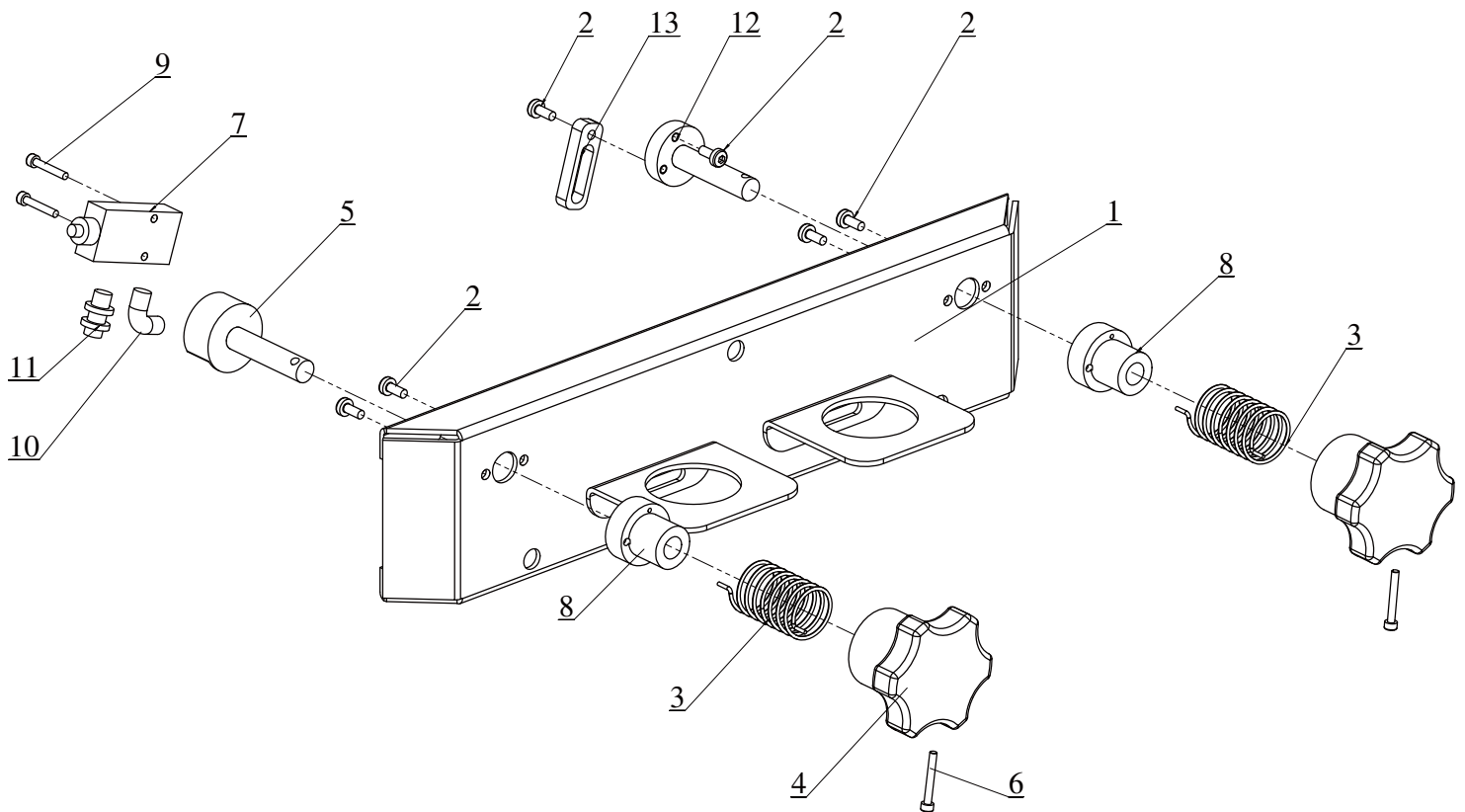




ITEM	NUM	NAME	QTY
41	RJ2600-4012	Support Plate	1
42	RJX26-9300	Air Hydraulic Pump	1
43	B25-8×16	M8×16 HEX SOC BHCS	2
44	RJ2600-4009	Connecting Plate	1
45	VAS6131-9802-2	Fitting	2
46	B30-5	M5 HHCS	2
47	B33-6	M6 NYLON LOCK NUT	1
48	VAS6131-9802-1	Fitting	1
49	RJX26-9801-2	Hose	1
50	RJX26-9801-1	Hose	1
51	RJX26-9802-1	Straight Fitting	1
52	RJ2600-4002	Roller	2
53	RJ2600-4005	Axle	2
54	RJ2600-4003	Axle	1
55	RJ2600-4004	Axle	1
56	RJ2600-4010	Roller	2



ITEM	NUM	NAME	QTY
1	RJ2600-1100	TOP BEAM WELDMENT	1
2	RJ2600-1200	MIDDLE ARM WELDMENT	2
3	RJ2600-1300	OUTER ARM WELDMENT	2
4	B41-8	φ8 Plat Washer	6
5	B20-8×10	M8×10 HEX SOC BHCS	2



ITEM	NUM	NAME	QTY
1	RJX40-1400	COVER WELDMENT	1
2	B25-5×12	M5×12 HEX SOC BHCS	6
3	RJX40-1004	SPRING	2
4	RJX40-1005	HANDLE	2
5	RJX40-1006	GUIDE ROD	1
6	B20-4×30	M4×30 HEX SOC BHCS	2
7	S3V-06	Air Valve	1
8	RJX40-1001	GUIDE PIPE	2
9	B25-4×20	M4×20 HEX SOC BHCS	2
10	EPC6-01	Fitting	1
11	SPL6-01	Fitting	1
12	RJX40-1002	GUIDE ROD	1
13	RJ2600-3001	PLATE	1

Packing list

ITEM	NUM	NAME	QTY	REMARK
1	RJ-X26-2N	Rolling Jack	1	
2	G3T-5400	Adapter	2	
3	RJ-X26-D1	Accessory Kit	1	
4	EX-RJ26-2N	Support Bar Kit	1	
5	RJX26-SMSE	Manual	1	

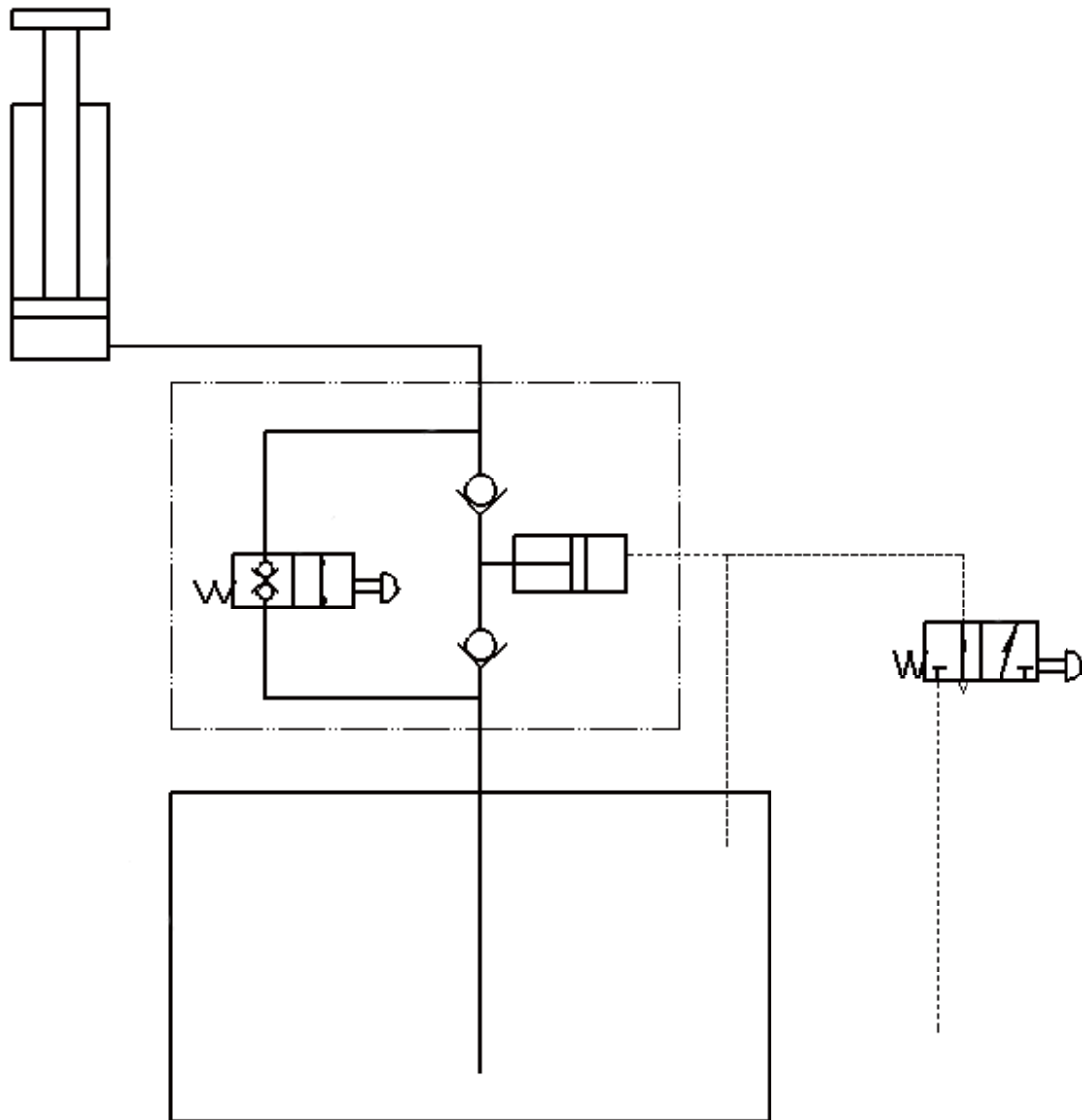
Optional Parts

ITEM	Num	NAME
1	FJ6171-1	90mm Adapter Kit
2	FJ6171-2	130mm Adapter Kit
3	150902Y	Air Kit

Spare Parts

ITEM	NUM	NAME
1	RJX40-1009	Hose
2	SF-1 2830	Shaft Sleeve
3	SF-1 2530	Shaft Sleeve
4	BB2512DU	Shaft Sleeve
5	SF-1 2010	Shaft Sleeve
6	SF-1 1822	Shaft Sleeve
7	SF-1 1812	Shaft Sleeve

Hydraulic Schematic



NOTES:

NOTES:

NOTES:

Installer: Please return this booklet to literature package, and give to lift owner/operator.

Thank You

Trained Operators and Regular Maintenance Ensures Satisfactory Performance of Your Rotary Lift.

Contact Your Nearest Authorized Rotary Parts Distributor for Genuine Rotary Replacement Parts. See Literature Package for Parts Breakdown.

Rotary World Headquarters
2700 Lanier Drive
Madison, IN 47250, USA
www.rotarylif.com



Rotary Lift Consolidated (Haimen) Co., Ltd
No.1388, East Xiushan Road, Haimen,
Jiangsu Province, China, 226100
www.vsg-asia.com
P: 86-513-81261262

© Vehicle Service GroupSM
Printed in China, All Rights Reserved.
Unless otherwise indicated, ROTARY,
and all other trademarks are property
of Dover Corporation and its affiliates.

