



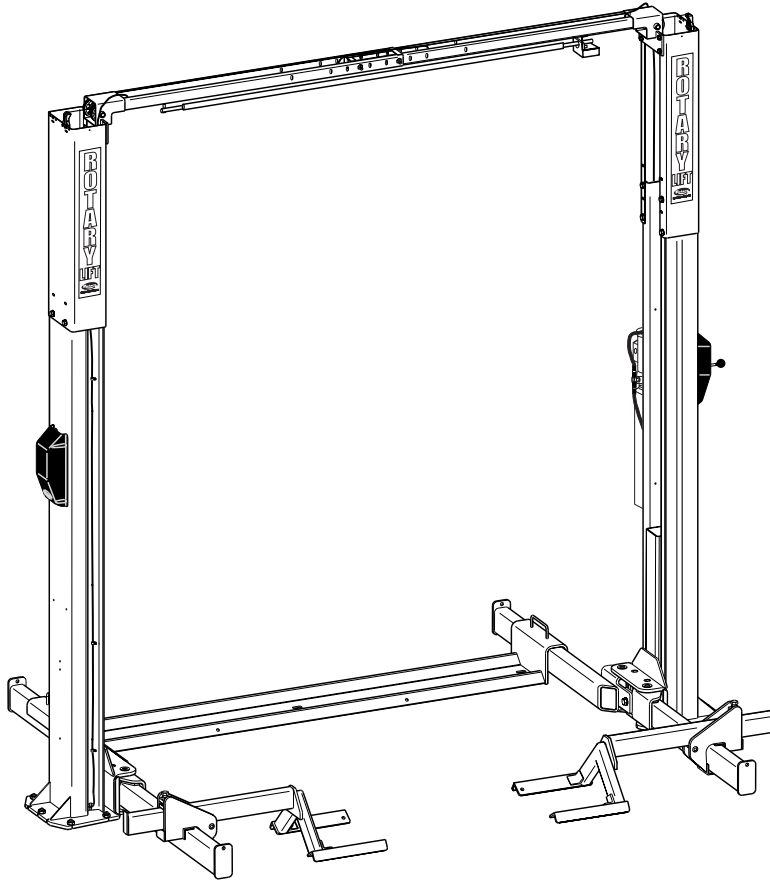
World Leader in Lift Productivity

TLO7E E, M, And *i* Series Two Post Surface Mounted Lifts



P
A
R
T
S

B
R
E
A
K
D
O
W
N



IMPORTANT: When ordering parts or requesting service always give exact model and power unit serial number. Model number is shown on nameplate attached to power unit column. Power unit serial number is located on side of power unit.

OWNERS RECORD
Complete information at right and keep in a safe place.

Date Installed _____

Installed in Bay # _____

Power Unit Serial # _____

Power Unit Model # _____

Lift Serial # _____

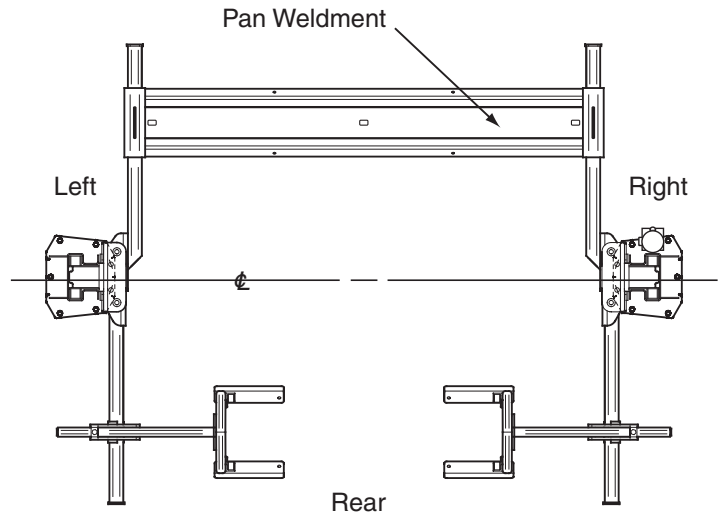
Lift Model # _____

NOTE: For replacement parts -See your nearest Rotary Parts Distributor.

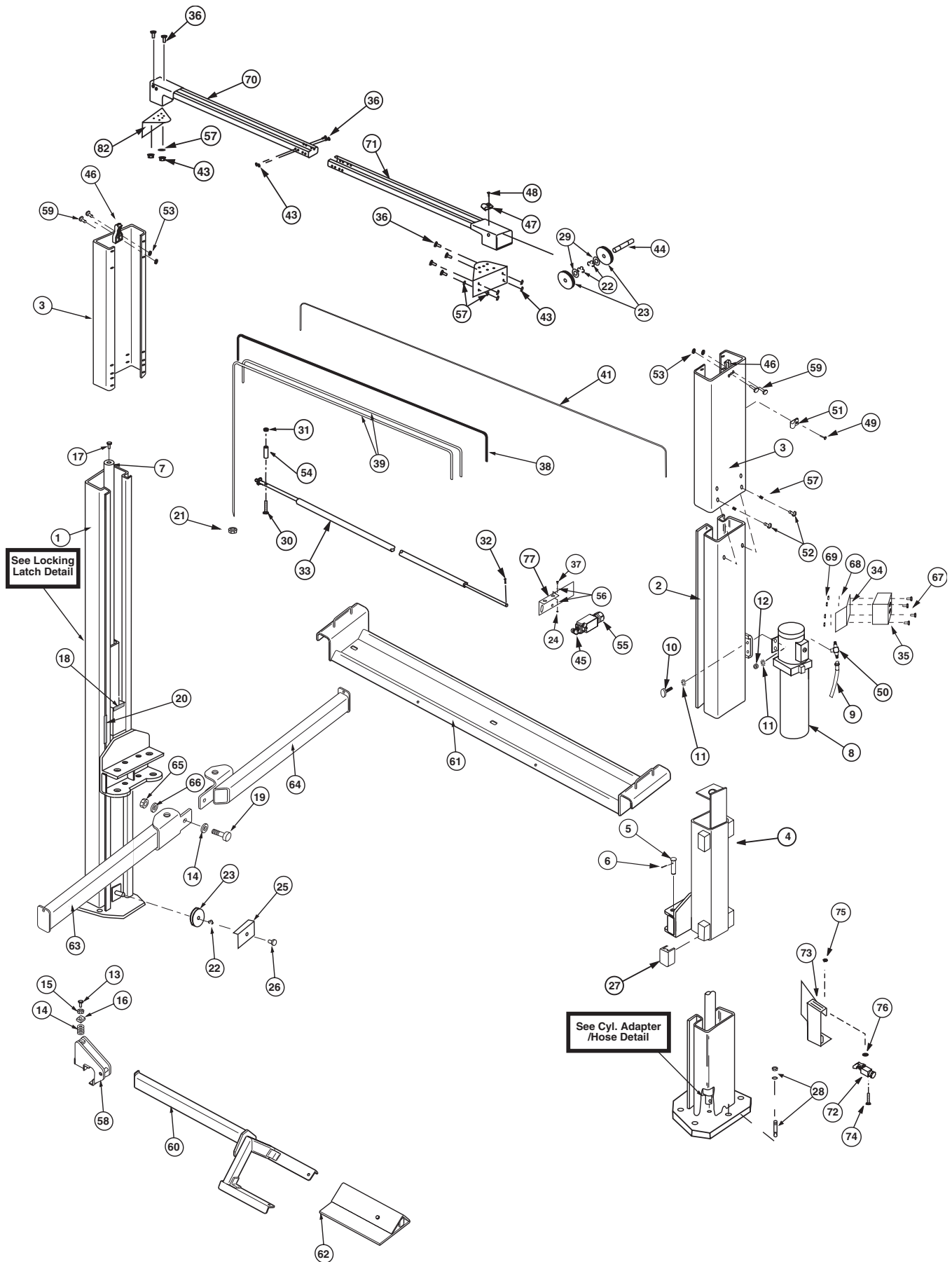
PB 2-32-15
Rev. A 06/10/2003

M SERIES PARTS LIST

1	L.H. Column Weldment	N744	50	Branch Tee	FJ7668
2	R.H. Column Weldment	N745	51	Hose Clip (6 req'd-Column)	FJ7499
3	Column Extension		52	3/8"-16NC x 1/2" Flanged HHCS	40122
	EH-1 MODEL	N46	53	1/4"-20NC Flanged Locknut	40641
	EH-2 MODEL	N47	54	3/4" Spacer (2 req'd)	FJ7871
	EH-4 MODEL	N49	55	Limit Switch Assembly	N412
4	Carriage Yoke Weldment	N820	56	1/4" External Tooth Lockwasher	40779
5	Arm Pin	FJ7838	57	3/8" External Tooth Lockwasher	40845
6	3/16" x 2" Long Cotter Pin	41250	58	Fork Adapter Weldment	N281
7	Hydraulic Cylinder	N343	59	1/4"-20NC x 1" HHCS Grade 5	40108
8	Power Unit		60	Fork Weldment	N281
	1 PHASE	P1073-7	61	Pan Weldment	N280
	3 PHASE	P1071-7	62	Small Wheel Adapter	
9	Power Unit Hose	FJ837		Left Front and Right Rear	N263-5
10	5/16"-18NC x 1-1/2" HHCS	40238		Right Front and Left Rear	N263-6
11	5/16" External Tooth Lockwasher	40854	63	Rear Rail Weldment	
12	5/16"-18NC Hex Nut	40670		Right Rear	N279
13	3/4"-10NC x 2-1/2" Lg. HHCS (Full Thread)	40478		Left Rear	N278
14	3/4" SAE Flat Washer (5 per side)	41021	64	Front Rail Weldment	
15	3/4"-10NC Hex Jam Nut	40759		Right Front	N277
16	Fork Adjustment Block	N233-4		Left Front	N276
17	Bleeder Screw (Specify Manufacturer)	N/A	65	3/4"-10NC Hex Nut	40760
18	Carriage Bumper (152mm Lg.)	FJ7391-2	66	3/4" Lockwasher	40917
19	3/4"-10NC x 2"Lg. HHCS	40476	67	#8-32NCx3/4" Lg. RHMS, Plated	40091
20	Approach bumper (457mm Lg.)	FJ7391-1	68	#8 External Tooth Lockwasher	41439
21	1/2"-13NC Hex Nylon Insert Lock Nut	40703	69	#8-32NC Hex Nut, Plated	40637
22	Truarc #5304-75 Klipping for 3/4" Shaft	41411	70	L.H. Overhead Weldment (Outer)	N437-1
23	Sheave	FJ7116-1	71	R.H. Overhead Weldment (Inner)	N438-1
24	1/4"-20NC Hex Nut	40627	72	Lower Limit Switch	N411-1
25	Sheave Cover	N119-1	73	Toe Guard Weldment	FA7123-2
26	1/4"-20NC x 3/8" Lg. PHMS Plated (2 pcs.)	40063	74	#10-24NC x 1-1/2" Lg. SHCS	40039
27	Slider block	FJ7360	75	#10-24NC Flanged Whizlock Nut, Plated	40633
28	20mm Concrete Anchor (10 req'd)	W140210	76	#10 SAE Flat Washer, Plated	40785
29	1-1/2" O.D. x .760-.770" I.D. x .045" Thick Mach. Bushing	41388	77	Overhead Mounting Bracket	N411-2
30	1/4"-20NC x 2-3/4" Hex Head Bolt	40114			
31	1/4"-20NC Locknut	41423			
32	1/8" x 1" Lg. Cotter Pin	41200			
33	Switch Bar Assembly	FJ7613-2			
34	Bracket Extension	FA7123-1			
35	Warning System Control Box	FA7123			
36	3/8"-16 NC x 3/4" Long Flanged HHCS	40134			
37	1/4"-20NC x 3/4" HHCS Grade 5	40104			
38	Overhead Hose				
	Standard Height	FJ839			
	EH-1 MODEL	FJ842			
	EH-2 MODEL	FJ843			
	EH-4 MODEL	FJ845			
39	Equalizer Cables				
	Standard Height	FJ7450			
	EH-1 MODEL	FJ7547			
	EH-2 MODEL	FJ7528			
	EH-4 MODEL	FJ7601			
40					
41	Locking Latch Cable				
	Standard Height, EH1 and EH2 MODEL	FJ7594-1			
	EH4 MODEL	FJ7595-1			
	EH-4 Model	FJ7600			
42	3/8"-16NC x 1" Flanged HHCS	40144			
43	3/8"-16NC Flanged Locknut	40664			
44	Sheave Shaft	FJ7444-8			
45	Limit Switch	N411-1			
46	Upper Latch Cable Guide	N69			
47	Pipe Clip (4 req'd-Overhead)	FJ7206			
48	#12 Type B x 1/2" Lg. Slotted Hex Washer Head Screw Zinc Plated (4 req'd)	40057			
49	5/16-18NC x 3/8" Slotted PHMS (For Columns)	40227			

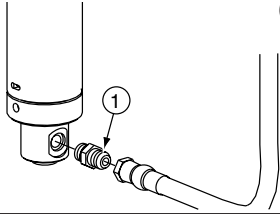


M SERIES PARTS LIST



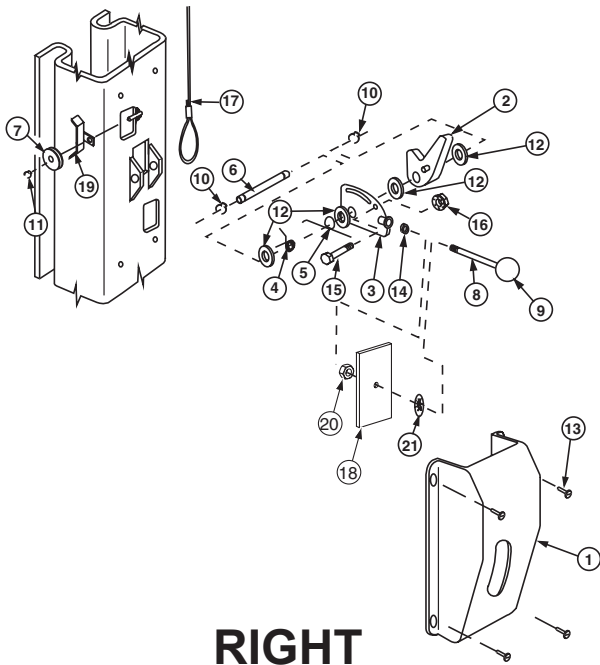
M SERIES PARTS LIST

CYLINDER ADAPTER / HOSE DETAIL



CYLINDER ADAPTER/HOSE DETAIL PARTS LIST

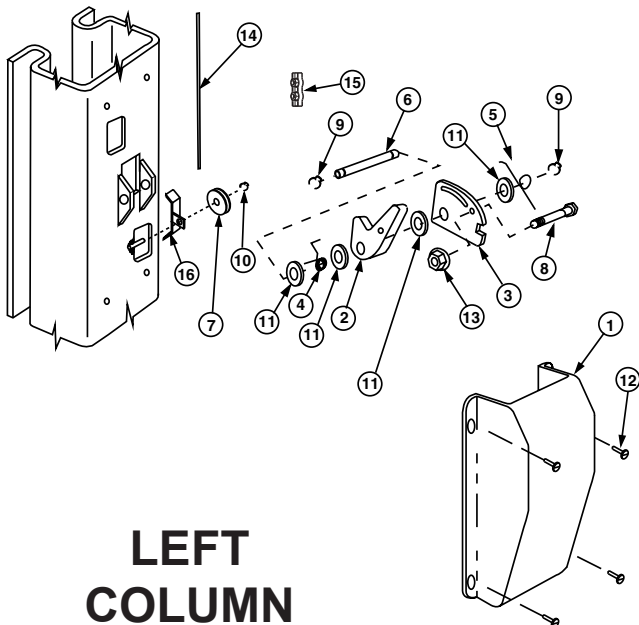
ITEM NO.	DESCRIPTION	PART NO.
1	Straight Adapter	FJ7352-3



RIGHT COLUMN

LOCKING LATCH DETAIL PARTS LIST

ITEM NO.	DESCRIPTION	PART NO.
1	Control Side Cover	FJ7452
2	Locking Latch Dog	FJ7382-7
3	Control Plate	FJ7594-2
4	Spring	FJ7566-10
5	Spring	FJ7382-9
6	Latch Shaft	FJ7382-34
7	Locking Latch Sheave	FJ7322
8	Handle	FJ7382-18
9	Ball Handle	FC134-91
10	Truarc Klipring #5304-75 for 3/4" Shaft	41411
11	Truarc Klipring #5304-37 for 3/8" Shaft	41410
12	1-1/2 O.D. x 3/4" I.D. x .045" Mach. Bush.	41388
13	5/16"-18NC x 3/8" Lg. Button Head Cap Screw (Allen socket)	N/A
14	3/8" - 16NC Hex Jam Nut	40658
15	Shoulder Bolt, 5/16" x 1-1/4" 20 NC	40220
16	1/4" 20NC Locknut	41423
17	Latch Cable	FJ7595-1
	Model EH-4 Model	FJ7600
18	Slot Cover	N617
19	Latch Sheave Cover	N64
20	1/2"-13NC Jam Nut	40700
21	Push Nut	N62-2

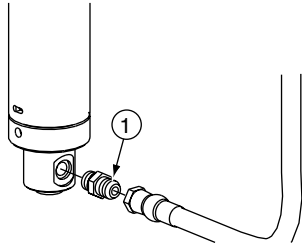


LEFT COLUMN

LOCKING LATCH DETAIL PARTS LIST

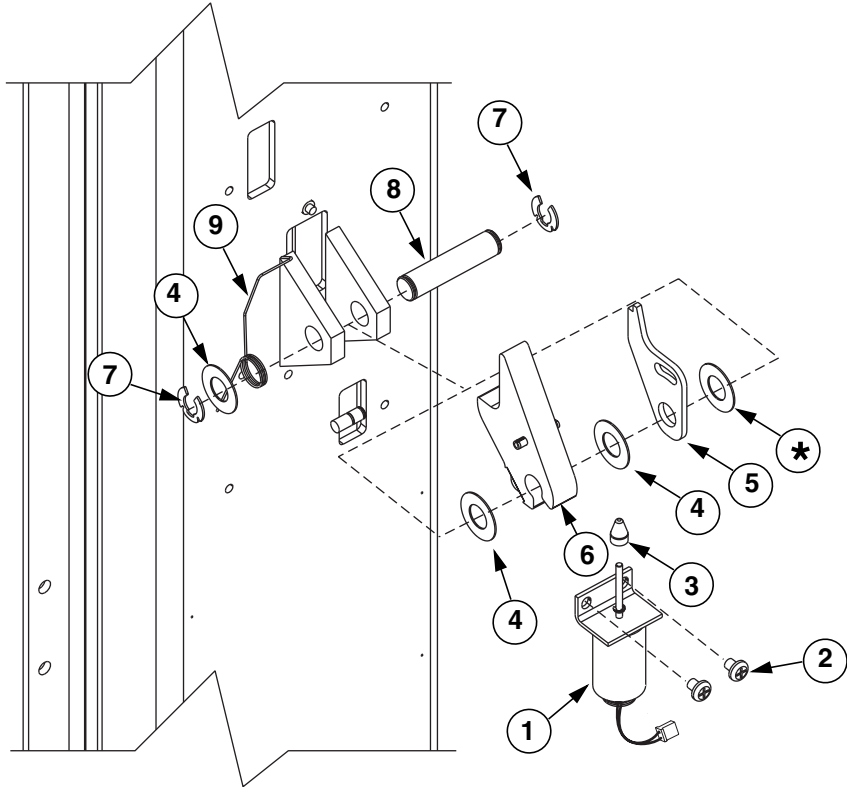
ITEM NO.	DESCRIPTION	PART NO.
1	Latch Cover	FJ7451
2	Locking Latch Dog	FJ7382-7
3	Control Plate	FJ7382-5
4	Spring	FJ7566-10
5	Spring	FJ7382-9
6	Latch Shaft	FJ7382-34
7	Locking Latch Sheave	FJ7322
8	Shoulder Bolt 5/16" x 1-1/4" 20NC	40220
9	Truarc Klipring #5304-75 for 3/4" Shaft	41411
10	Truarc Klipring #5304-37 for 3/8" Shaft	41410
11	1-1/2" O.D. x 3/4" I.D. x .045" Mach. Bush.	41388
12	5/16"-18NC x 3/8" Lg. Button Head Cap Screw (Allen socket)	N/A
13	1/4"-20NC Locknut	41423
14	Latch Cable	FJ7595-1
	EH-4 Model	FJ7600
15	Cable Clamp	N63-1
16	Sheave Cover	N64

E AND i SERIES PARTS LIST



CYLINDER HOSE ADAPTER DETAIL		
ITEM	DESCRIPTION	PART
1	Straight Adapter	FJ7352-3

SOLENOID / LOCKING LATCH ASSEMBLY

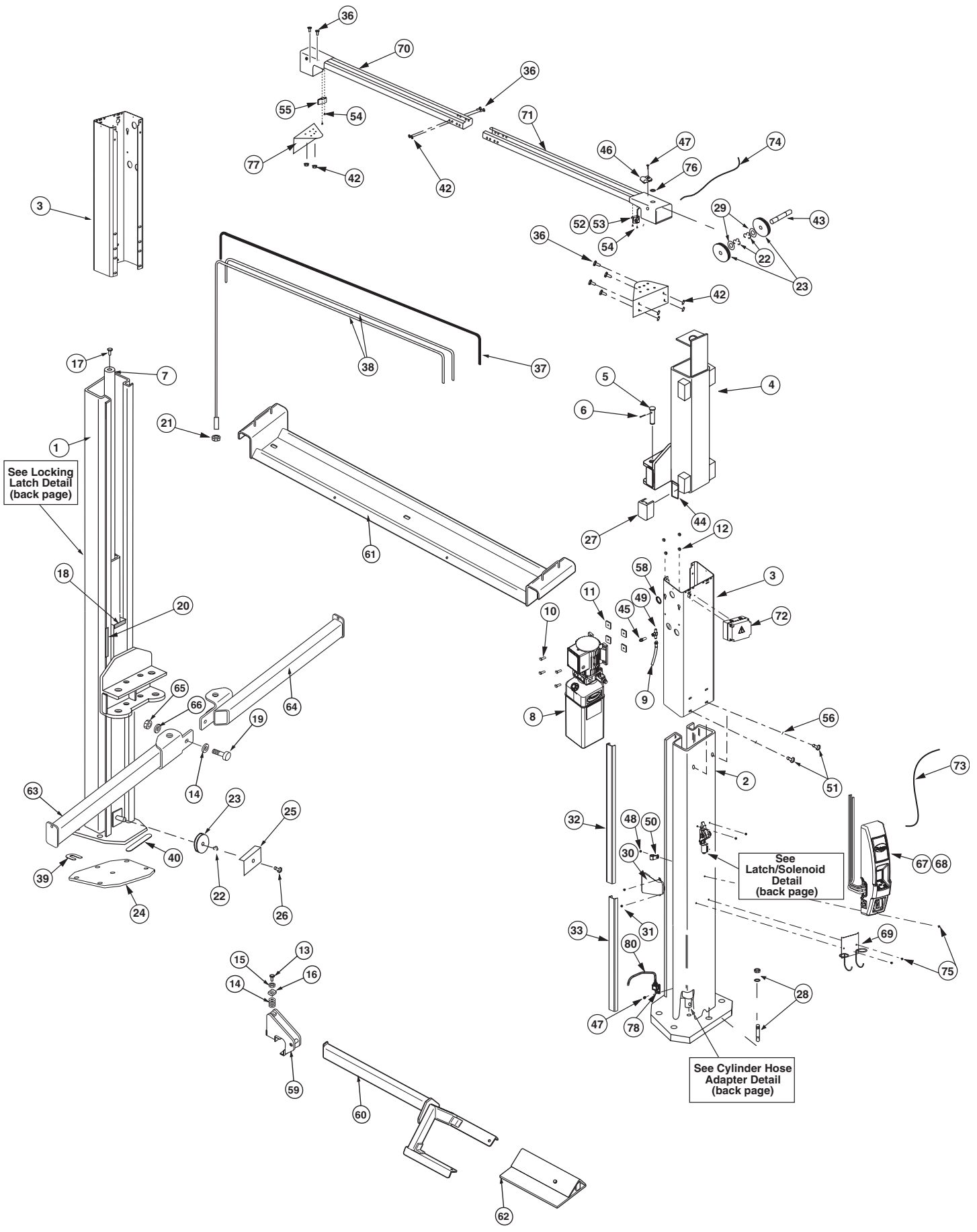



LOCKING LATCH DETAIL PARTS LIST		
ITEM	DESCRIPTION	PART
1	Solenoid	N613
2	5/16" - 3/8" PHMS	40227 2 REQ'D
3	Slider	N613-1
4	1-1/2" O.D. x 3/4" I.D. x .045 Mach. Bush.	41388
5	Latch Control Plate	N613-3
6	Locking Latch	N613-4
7	Truarc Klipring #5304-75 for 3/4" Shaft	41411
8	Latch Shaft	FJ7382-34
9	Latch Spring	N613-2

E AND i SERIES PARTS LIST

1	L.H. Column Weldment	N744		59 Fork Adapter Weld	N282
2	R.H. Column Weldment	N744		60 Fork Weldment	N281
3	Column Extension			61 Pan Weldment	N280
	Standard			62 Small Wheel Adapter	
	EH-1 MODEL	N46		Left Front and Right Rear	N263-5
	EH-2 MODEL	N47		Right Front and Left Rear	N263-6
	EH-4 MODEL	N49	63	Rear Rail Weldment	
4	Carriage Yoke Weldment	N820		Right Rear	N279
5	Arm Pin	FJ7838		Left Rear	N278
6	3/16" x 2" Long Cotter Pin	41250	64	Front Rail Weldment	
7	Hydraulic Cylinder	N343		Right Front	N277
8	Power Unit			Left Front	N276
	1 PHASE	P1366	65	3/4"-10NC Hex Nut	40760
	3 PHASE	P1367	66	3/4" Lockwasher	40917
9	Power Unit Hose	N329	67	Master Control Panel E Series	
10	5/16"-18NC x 1-1/2" HHCS (Full Thread)	40271		E Series 1 PHASE	FA7213
11	Vibration Pad	P1164-3		i Series 1 PHASE	FA7216
12	5/16"-18NC Hex Nut	40670		E Series 3 PHASE	FA7211
13	3/4"-10NC x 2-1/2" Lg. HHCS (Full Thread)	40478		i Series 3 PHASE	FA7215
14	3/4" SAE Flat Washer (5 Per Side)	41021	68	Slave Control Panel	
15	3/4"-10NC Hex Jam Nut	40759		1 PHASE Standard Height	FA7214
16	Fork Adjustment Block	N233-4		1 PHASE EH1 and EH2 Models	FA7214-2
17	Bleeder Screw (Specify Manufacturer)	N/A		3 PHASE Standard Height	FA7212
18	Carriage Bumper	FJ7391-2		3 PHASE EH1 and EH2 Models	FA7212-5
19	3/4"-10NC x 2" Lg HHCS	40476		3 PHASE EH4 Model	FA7232
20	Approach bumper	FJ7391-1	69	Air Tool Holder Weldment	FA5162
21	1/2"-13NC Hex Lock Nut	40703	70	L.H. Overhead Weldment (Outer)	N437-1
22	Truarc #5304-75 Klipping for 3/4" Shaft	41411	71	R.H. Overhead Weldment (Inner)	N438-1
23	Sheave	FJ7116-1	72	Junction Box	FA925
24	Shim Kit	FA5112	73	Slave Control Cable Extension	
25	Sheave Cover	N119-1		EH-1 Model	FA7180-42
26	1/4"-20NC x 3/8" Lg. PHMS Plated (2 pcs.)	40063		EH-2 Model	FA7180-43
27	Slider block	FJ7360		EH-4 Model	FA7180-44
28	3/4" Concrete Anchor	FJ7380	74	Photosensor Cable Extension	
29	1-1/2" O.D. x .760-.770" I.D. x .045" Bushing	41388		EH-1 Model	FA7180-45
30	Wiring Chase	FA928		EH-2 Model	FA7180-46
31	#8-32 Type B x 5/8" Lg. PHTS.	41457		EH-4	FA7180-47
32	Upper Web Cover	FA926	75	Screws for Control Panels And Tool Holders	
33	Lower Web Assembly	FA933		5/16" - 3/8" PHMS	10 REQ'D
34			76	Wire Grommet	FA7180-31
35	Restraint Gear	N2122	77	Mounting Bracket	N439
36	3/8"-16 NC x 3/4" Long Flanged HHCS	40124	78	Lower Photosensor Bracket	N442-2
37	Overhead Hose		79		
	Standard	N335	80	Lower Photosensor	N428-6
	EH-1 MODEL	N335			
	EH-2 MODEL	N335			
	EH-4 MODEL				
38	Equalizer Cables				
	Standard	FJ7450			
	EH-1 MODEL	FJ7547			
	EH-2 MODEL	FJ7528			
	EH-4 MODEL				
39	Horse Shoe Shim	FJ716-6			
40	Front Shim	FJ659-3			
41	3/8"-16NC x 1" Flanged HHCS	40144			
42	3/8"-16NC Flanged Locknut	40664			
43	Sheave Shaft	FJ7444-8			
44	Slider Block Shim	N115			
45	Male Extension With O-Ring	N332			
46	Hose Clip (4 req'd-Overhead)	FJ7206			
47	#12 Type B x 1/2" Lg. Sl. HWHTS	40057			
48	5/16"-18NC x 3/8" PHMS	40227			
49	Female Swivel Tee	N331			
50	Hose Clip (6 req'd-Column)	FJ7499			
51	3/8"-16NC x 1/2" Flanged HHCS	40122			
52	Overhead Sensor	N428			
53	Overhead Photosensor Bracket	N428-1			
54	#12 TYPE B X 1/2" Lg. Slotted HWHS	2 Req'd.			
55	Reflector Bracket Assembly	N428-2			
56	3/8" External Tooth Lockwasher	40845			
57					
58	Hose Grommet	FA7180-32	6		

E AND i SERIES PARTS LIST



World Headquarters:
Rotary Lift
A  **DOVER** COMPANY
2700 Lanier Drive
Madison, Indiana USA
Phone: 1.800.445.5438
Phone: 1.812.273.1622
Fax: 1.800.578.5438
Fax: 1.812.273.6502
userlink@rotarylif.com
www.rotarylif.com

Italy:
(Regional Sales Office)
Rotary Lift Europe S.r.l.
Cadriano (BO)
Phone: +39.051.763384
Fax: +39.051.763395
info@rotaryeurope.com

Germany:
(European Sales Headquarters)
Rotary Lift Germany GmbH
Bensheim
Phone: +49.6251.582.6420
Fax: +49.6251.582.6422
sales@rotarylif.de

United Kingdom:
(Regional Sales Office)
Rotary Lift (UK) LTD.
Halstead, Essex
Phone: +44.178.747.7711
Fax: +44.178.747.7720
sales@rotarylif.idps.co.uk

Canada:
(Regional Sales Office)
Rotary Lift Canada
Mississauga, Ontario
Phone: 905.812.9920
Fax: 905.812.9719
canada@rotarylif.com

Austral-Asia:
(Regional Sales Office)
Rotary Lift Austral/Asia
Petaling Jaya, Malaysia
Phone: +60.3.7660.0285
Fax: +60.3.7660.0289
rlim@rotarylif.com

