



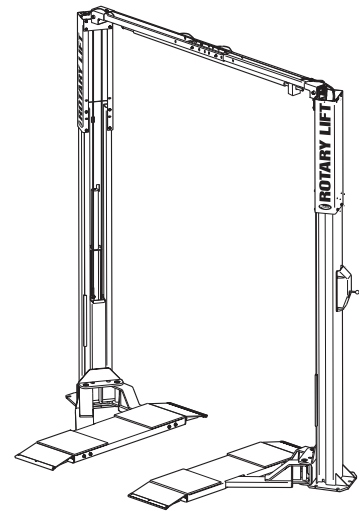
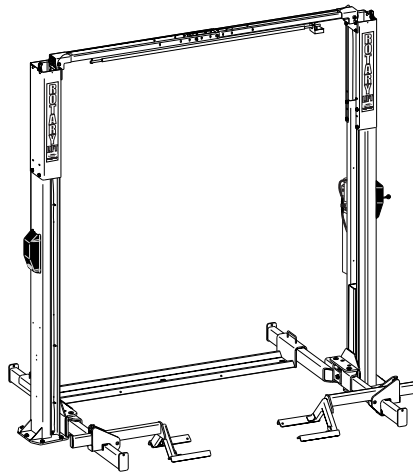
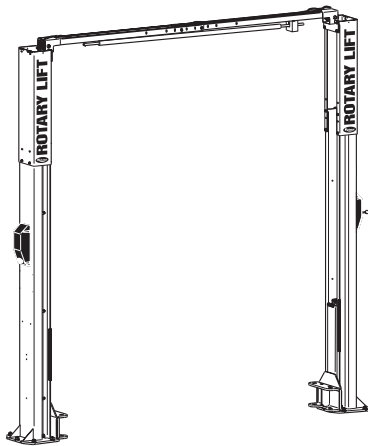
SPOA82 Capacity 7,000 lbs.

TLO7 Capacity 7,000 lbs.

SPO10W Capacity 6,000 lbs

(Refer to Runway Manufacturer for Runway Capacity)

(500 Series Lifts)



P
A
R
T
S

B
R
E
A
K
D
O
W
N

IMPORTANT: When ordering parts or requesting service always give exact model and power unit serial number. Model number is shown on nameplate attached to power unit column. Power unit serial number is located on side of power unit.

OWNERS RECORD
Complete information
at right and keep in
a safe place.

Date Installed _____

Installed in Bay # _____

Power Unit Serial # _____

Power Unit Model # _____

Lift Serial # _____

Lift Model # _____

NOTE: For replacement parts -See your nearest Rotary Parts Distributor.

PB 2-2-41

Rev. K 4/2/2012

1. L.H. Column Weldment	N752
2. R.H. Column Weldment	N755
3. Column Extension	
Standard Height	N470
EH-1 MODEL	N471
EH-2 MODEL	N472
EH-4 MODEL (SPO10W/TLO7 Only)	N474
4. Carriage Yoke Weldment	N822
5. Wheel Spotting Dish Anchor (included in FF729) FJ7659-2	
6. N/A	N/A
7. Hydraulic Cylinder	
68" Rise	N380
71" Rise	N382
8. Power Unit	
1Ø 60Hz 208-230V (SPOA82).....	*P1352/P3352
3Ø 50-60Hz 230-460V (SPOA82)	*P1353/P3353
1Ø 60Hz 230V (SPO10W).....	*P1302/P3302
3Ø 50-60Hz 230-460V (SPO10W)	*P1347/P3347
3Ø 575V (SPO10W)	*P1359/P3359
1Ø 60Hz 230V (TLO7).....	*P1350/P3350
3Ø 50-60Hz 230-460V (TLO7)	*P1346/P3346
3Ø 575V (TLO7)	*P1354/P3354
9. Power Unit Hose	FJ837
10. 5/16"-18NC x 1-1/2" Flanged HHCS (Full Thread).....	40509
11. NA.....	NA
12. 5/16"-18NC Hex Flanged Lock Nut	40678
13. Slider Block Shim	N115
14. 3/8" External Tooth Lockwasher	N/A
15. 1/4"-20NC x 3/4" Lg. HHCS.....	40099
16. 1/4" Plain Washer	40795
17. Bleeder Screw (Specify Manufacturer).....	N/A
18. Carriage Bumper	FA941
19. Horse Shoe Shim	FJ716-6
20. Approach Bumper.....	FJ7391-1
21. 5/8"-11NC Nylon Insert Lock Nut.....	40743
22. Truarc #5304-75 Klipring for 3/4" Shaft	41411
23. Sheave	N377
24. 1/4"-20NC Zinc Hex Nut	40627
25. Sheave Cover.....	N119-1
26. 1/4"-20NC x 3/8" Lg. PHMS Plated (2 pcs.)	40063
27. Slider block	FJ7360
28. 3/4" Concrete Anchor.....	FJ7380
29. 1-1/2" O.D. x .760-.770" I.D. x .045" Bushing	41388
30. 1Ø 1/4"-20NC x 2" HHCS	40109
3Ø 1/4"-20NC x 2-3/4" Hex Head Bolt.....	40114
31. 1/4"-20NC Insert Locknut	40642
32. 1/8" x 1" Lg. Cotter Pin (3Ø Only).....	41200
33. Switch Bar Assembly	
1Ø (SPOA82).....	N415
1Ø (SPO10W/TLO7).....	N467
3Ø (SPOA82/SPO10W/TLO7).....	N434
34. Wheel Spotting Dish Kit (SPO10W/SPOA82 Only)	FF729
35. N/A.....	N/A
36. 3/8"-16 NC x 3/4" Long Flanged HHCS.....	40124
37. Front Shim.....	FJ7659-3
38. Overhead Hose	
Standard	FJ839
EH-1 MODEL	FJ842
EH-2 MODEL	FJ843
EH-4 MODEL (SPO10W/TLO7 Only)	FJ845
39. Equalizer Cables	
Standard (SPOA82).....	N384
EH-1 MODEL (SPOA82).....	N385
EH-2 MODEL (SPOA82).....	N386

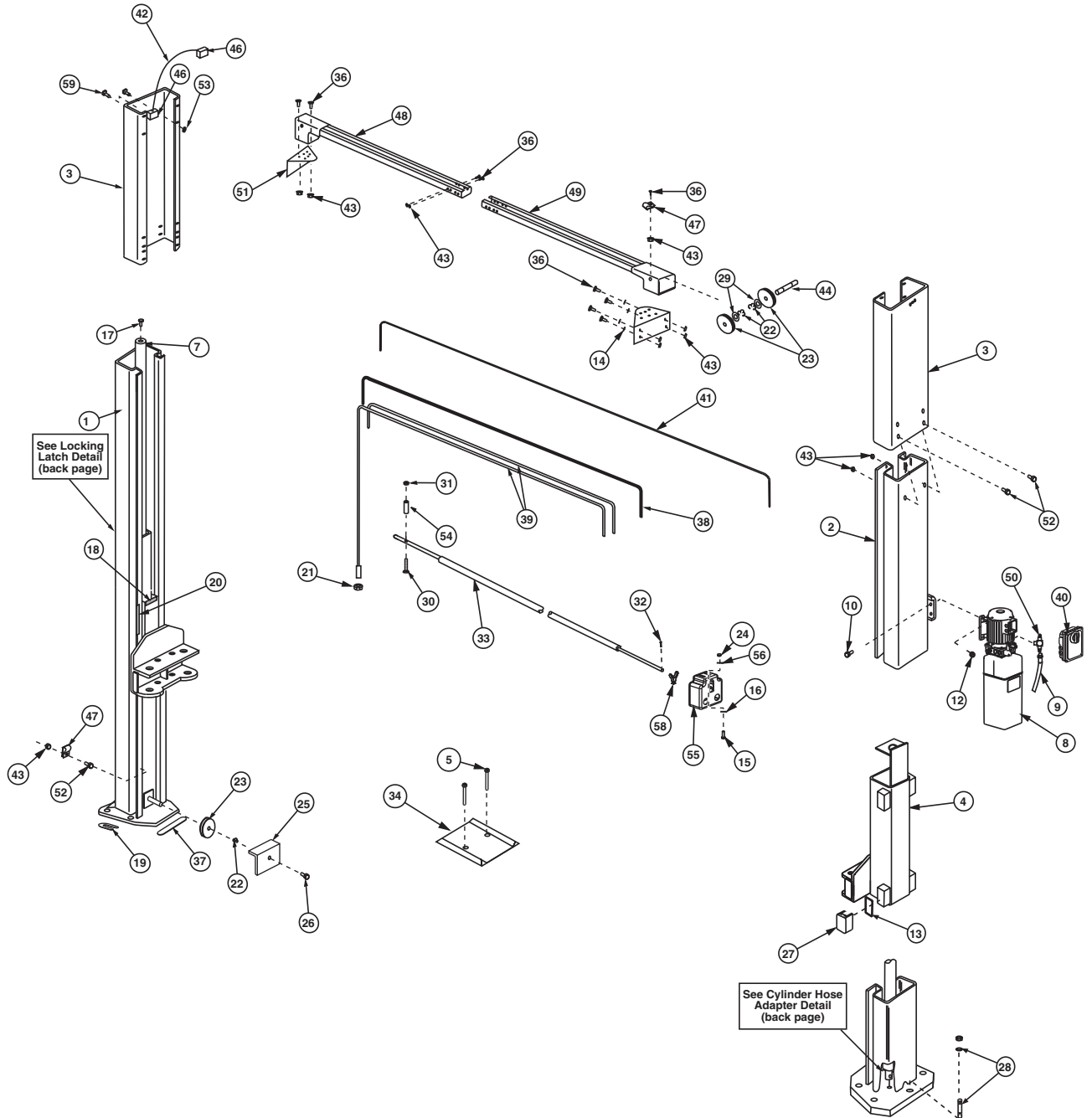
Standard (SPO10W/TLO7).....	N374
EH-1 MODEL (SPO10W/TLO7).....	N379
EH-2 MODEL (SPO10W/TLO7).....	N375
EH-4 MODEL (SPO10W/TLO7).....	N376
40. Capacitor Box	FA7147-1
Capacitor Box Cover Plate	FA7366-1
Drum Switch	FA7364
Drum Switch Lever	FA7364-1
M5 x 45 PHMS, Plated	41672
41. Locking Latch Cable.....	FJ7595-1
EH-4 MODEL (SPO10W/TLO7 Only).....	FJ7600
42. Cable Guide.....	N618
43. 3/8"-16NC Flanged Locknut	40664
44. Sheave Shaft.....	FJ7444-8
45. N/A.....	N/A
46. Cable End Bracket.....	N619
47. Hose Clip.....	N383
48. L.H. Overhead Assembly (Outer)	N480-1
49. R.H. Overhead Assembly (Inner).....	N481-1
50. Branch Tee	FJ7668
51. Column Mounting Bracket	N439
52. 3/8"-16NC x 3/4" Carriage Bolts	N/A
53. 1/4"-20NC Flanged Locknut	40641
54. 3/4" Spacer	FJ7871
55. Cutoff Switch Assembly	N413
Cutoff Switch	N413-1
56. 1/4" External Tooth Lockwasher	40779
57. N/A.....	N/A
58. Actuator Assembly (3Ø).....	N432-5
59. 1/4"-20NC x 1" HHCS Grade 5.....	40108

NOTE: Standard hardware items should be purchased from local hardware source when possible.

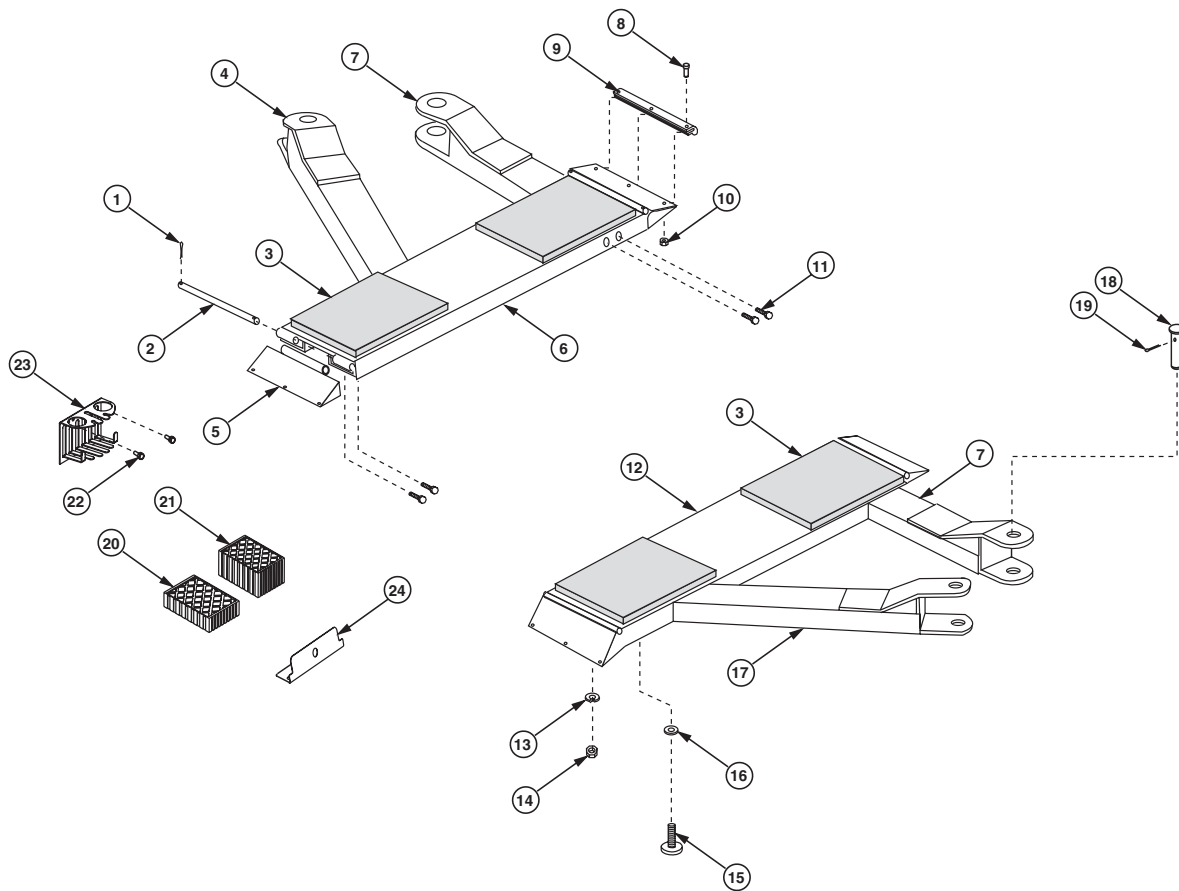
CAUTION Care should be taken to use hardware equal to that specified in this listing. (If grade is not specified, use Grade 2 minimum.)

*Two different power units were used. Please verify your model number before ordering parts.

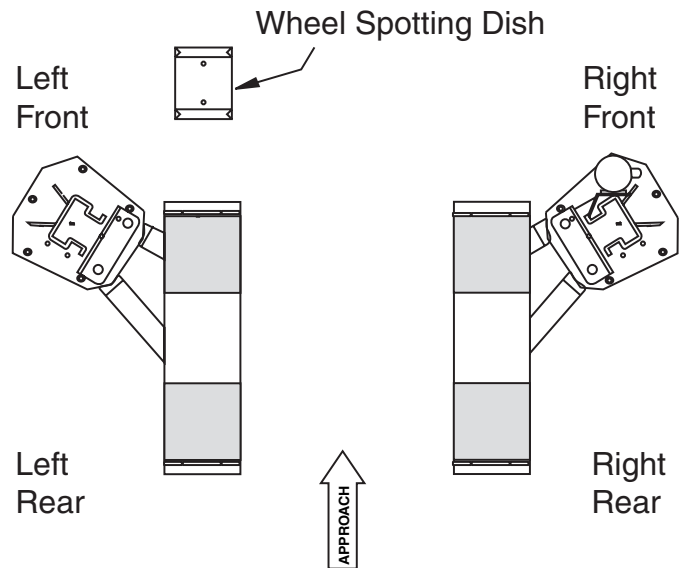
SPO10W (Base Model)



SPOA82

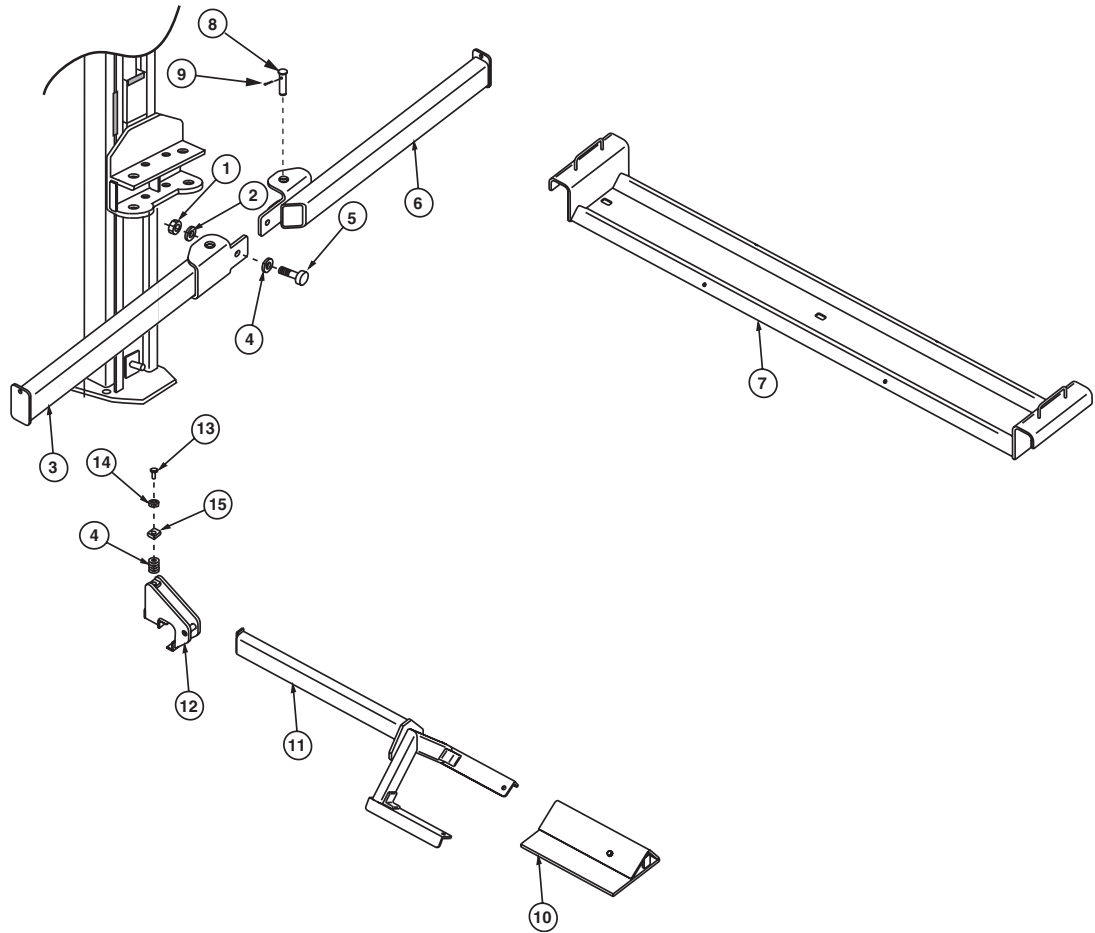


- | | |
|--|-----------|
| 1. 5/32" x 1" Cotter Pin | 41202 |
| 2. Hinge Pin | FC5179-5 |
| 3. Rubber Pad | FJ2433 |
| 4. Left Rear Arm Weldment | N2267 |
| 5. Ramp Weldment (unassembled) | N2252 |
| 6. Left Pad Assembly | N2253 |
| 7. Front Arm Weldment | N2183 |
| 8. #10-24NC Phillips Truss Head MS | 40192 |
| 9. Ramp Slide | FC134-33 |
| 10. #10-24NC Flanged Whizlock Nut | 40633 |
| 11. 1/2"-13NC x 1-1/4" Lg. Grade 5 Flanged
Whizlock Screw | 40279 |
| 12. Right Pad Assembly | N2254 |
| 13. 3/8" Split Lockwasher | 40800 |
| 14. 3/8"-16NC Jam Nut | FC134-9-6 |
| 15. Adjustment Screw (foot) | FJ7465-15 |
| 16. 3/8" Flat Washer | 40820 |
| 17. Right Rear Arm Weldment | N2268 |
| 18. Arm Pin | N2171 |
| 19. 3/16" x 2" Long Cotter Pin | 41250 |
| 20. 1-1/2" Rubber Adapter Pad | FJ2427 |
| 21. 3" Rubber Adapter Pad | FJ2428 |
| 22. 5/16"-18NC x 3/8" Lg. PHMS | N/A |
| 23. Tool Holder | FA5191 |
| 24. Retaining Bracket | N2115 |

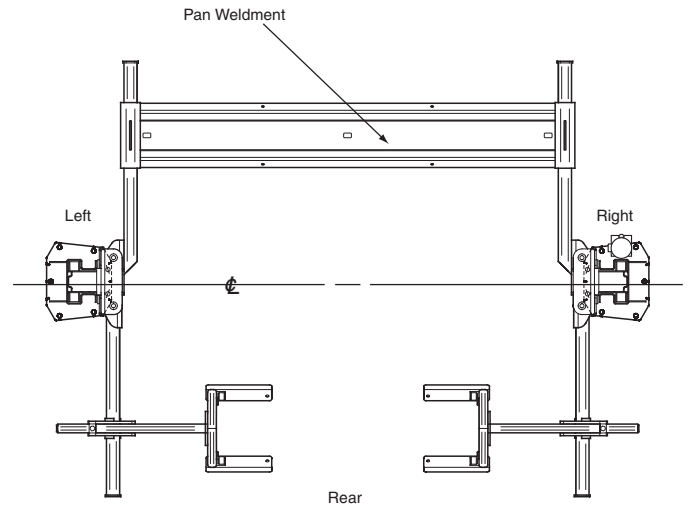


SPOA82 PLAN VIEW

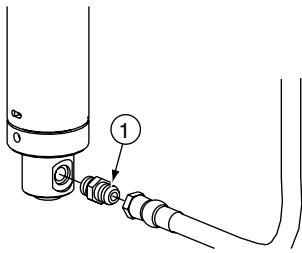
TLO7



- | | | |
|-----|---|--------|
| 1. | 3/4"-10NC Hex Nut..... | 40760 |
| 2. | 3/4" Lockwasher..... | 40917 |
| 3. | Rear Rail Weldment | |
| | Right Rear..... | N2189 |
| | Left Rear..... | N2188 |
| 4. | 3/4" SAE Flat Washer..... | 41021 |
| 5. | 3/4"-10NC x 2"Lg. HHCS..... | 40476 |
| 6. | Front Rail Weldment | |
| | Right Front..... | N2187 |
| | Left Front..... | N2186 |
| 7. | Pan Assembly..... | N2287 |
| 8. | Arm Pin..... | N2171 |
| 9. | 3/16" x 2" Long Cotter Pin..... | 41250 |
| 10. | Small Wheel Adapter | |
| | Left Front/Right Rear..... | N263-5 |
| | Right Front/Left Rear..... | N263-6 |
| 11. | Fork Assembly..... | N2286 |
| 12. | Fork Adapter Weldment..... | N282 |
| 13. | 3/4"-10NC x 2-1/2"Lg. HHCS(Full Thread).. | 40478 |
| 14. | 3/4"-10NC Hex Jam Nut..... | 40759 |
| 15. | Fork Adjustment Block..... | N233-4 |

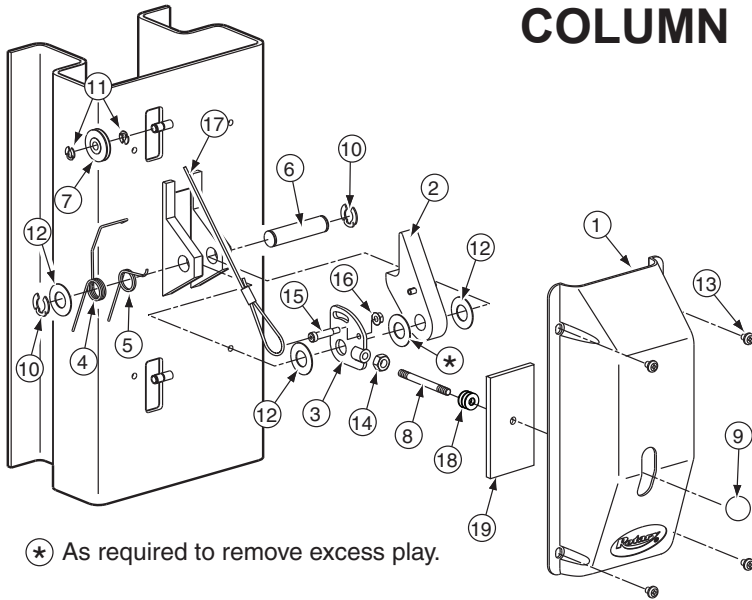


TLO7 PLAN VIEW



CYLINDER HOSE ADAPTER DETAIL		
ITEM	DESCRIPTION	PART
1	Straight Adapter	FJ7352-3

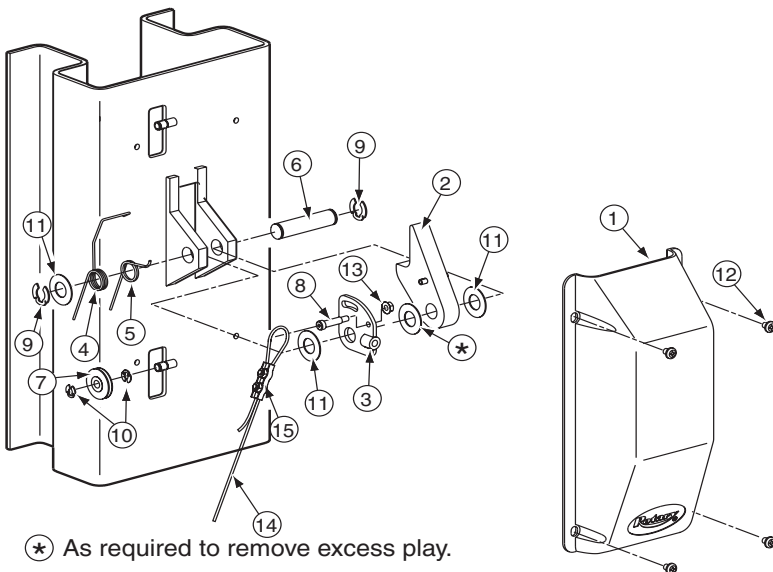
RIGHT COLUMN



LOCKING LATCH DETAIL PARTS LIST

ITEM	DESCRIPTION	PART
1	Control Side Cover	FJ7452
2	Latch/Bumper Assembly	N616
3	Control Plate	FJ7594-2
4	Spring	FJ7566-10
5	Spring	FJ7382-9
6	Latch Shaft	FJ7382-34
7	Locking Latch Sheave	FJ7322
8	Handle	FJ7382-18
9	Ball Handle	FC134-91
10	Truarc Klipring #5304-75 for 3/4" Shaft	41411
11	Truarc Klipring #5304-37 for 3/8" Shaft	41410
12	1-1/2" O.D. x 3/4" I.D. x .045" Mach. Bush.	41388
13	5/16"-18NC x 3/8" Lg. PHMS	40227
14	3/8" - 16NC Hex Jam Nut	40658
15	Shoulder Bolt, 5/16"-20 NC x 1-1/4"	40220
16	Flanged Locknut, 1/4" - 20NC	41423
17	Locking Latch Cable	FJ7595-1
	EH-4 for SPO10W/TLO7 Only	FJ7600
18	(3) 3/8" Flat Washer	40820
19	Slot Cover	N617

LEFT COLUMN



LOCKING LATCH DETAIL PARTS LIST

ITEM	DESCRIPTION	PART
1	Latch Cover	FJ7451
2	Latch/Bumper Assembly	N616
3	Control Plate	FJ7594-2
4	Spring	FJ7566-10
5	Spring	FJ7382-9
6	Latch Shaft	FJ7382-34
7	Locking Latch Sheave	FJ7322
8	Shoulder Bolt 5/16"-20NC x 1-1/4"	40220
9	Truarc Klipring #5304-75 for 3/4" Shaft	41411
10	Truarc Klipring #5304-37 for 3/8" Shaft	41410
11	1-1/2" O.D. x 3/4" I.D. x .045" Mach. Bush.	41388
12	5/16"-18NC x 3/8" Lg. PHMS	40227
13	Flanged Locknut, 1/4" - 20NC	41423
14	Locking Latch Cable	FJ7595-1
	EH-4 for SPO10W/TLO7 Only	FJ7600
15	Latch Cable Clamp	N63-1

NOTES:

Rotary World Headquarters

2700 Lanier Drive
Madison, IN 47250, USA
www.rotarylif.com

North America Contact Information

Tech. Support: p 800.445.5438
f 800.578.5438
e userlink@rotarylif.com
Sales: p 800.640.5438
f 800.578.5438
e userlink@rotarylif.com

World Wide Contact Information

World Headquarters/USA: 1.812.273.1622
Canada: 1.905.812.9920
European Headquarters/Germany: +49.771.9233.0
United Kingdom: +44.178.747.7711
Australasia: +60.3.7660.0285
Latin America / Caribbean: +54.3488.431.608
Middle East / Northern Africa: +49.771.9233.0

© Rotary®, Printed in U.S.A., All Rights Reserved. Unless otherwise indicated, ROTARY, DOVER and all other trademarks are property of Dover Corporation and its affiliates.



A **DOVER** COMPANY

